



VOL. 40 NO. 1

N E W S L E T T E R

FEBRUARY 2015



# THE LITTLE BROWN JUG RETURNS TO MINNESOTA

Page 16

Licensed to . Copyright Red Wing Collectors Society



## RWCS CONTACTS

### RWCS BUSINESS OFFICE

PO Box 50  
240 Harrison St. • Unit #3  
Red Wing, MN 55066-0050  
651-388-4004 or 800-977-7927 • Fax: 651-388-4042  
EXECUTIVE DIRECTOR: STACY WEGNER  
EXECUTIVEDIRECTOR@REDWINGCOLLECTORS.ORG  
MEMBERSHIP@REDWINGCOLLECTORS.ORG  
Web site: WWW.REDWINGCOLLECTORS.ORG

### BOARD OF DIRECTORS

PRESIDENT: LARRY BIRKS  
26400 S Hickory Trl. • Harrisonville, MO 64701-1184  
816-898-9260 • PRESIDENT@REDWINGCOLLECTORS.ORG

VICE PRESIDENT: PAUL WICHERT  
W247S7000 Sugar Maple Dr. • Waukesha, WI 53189  
414-731-0218 • VICEPRESIDENT@REDWINGCOLLECTORS.ORG

SECRETARY: JOHN SAGAT  
7241 Emerson Ave. So. • Richfield, MN 55423-3067  
612-861-0066 • SECRETARY@REDWINGCOLLECTORS.ORG

TREASURER: DAN BECK  
2215 Hill Place SW • Rochester, MN 55902  
507-398-6358 • TREASURER@REDWINGCOLLECTORS.ORG

HISTORIAN: NANCY LAMBERT  
17 Newcastle Lane • Bella Vista, AR 72714  
785-691-7213 • HISTORIAN@REDWINGCOLLECTORS.ORG

REPRESENTATIVE AT LARGE: RUSSA ROBINSON  
1970 Bowman Rd. • Stockton, CA 95206  
209-463-5179 • REPATLARGEWEST@REDWINGCOLLECTORS.ORG

INTERIM REP. AT LARGE: RICHARD NATYNSKI  
1250 Prairie Creek Blvd. # 207 • Oconomowoc, WI 53066  
608-617-7424 • REPATLARGEEST@REDWINGCOLLECTORS.ORG

AUCTION MANAGER: BRUCE SELFRIDGE  
PO Box 812 • Cloverdale, CA 95425  
707-431-7753 • AUCTION@REDWINGCOLLECTORS.ORG

COMMEMORATIVE MANAGER: BOB MORAWSKI  
2130 S. Ridgeway Dr. • New Berlin, WI 53146  
262-853-8269 • COMMEMORATIVE@REDWINGCOLLECTORS.ORG

EDUCATION MANAGER: GLENN BEALL  
29622 420th Ave. • Scotland, SD 57059  
712-644-2256 • EDUCATION@REDWINGCOLLECTORS.ORG

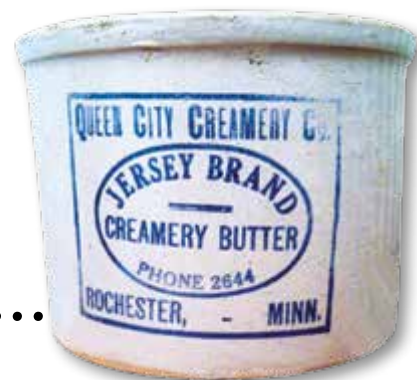
CONVENTION & MIDWINTER SUPPORT PERSONNEL:  
Pre-registration – JIM & KAREN KEYS  
HEIDI HAHLEN

Show & Sale – DALE ERICKSON, 507-645-6771  
SHOWANDSALE@REDWINGCOLLECTORS.ORG

Display Room – LAURA BEALL, 605-464-5941  
DISPLAY@REDWINGCOLLECTORS.ORG

KidsView & Young Collectors – LINDA WIPPERLING  
651-437-5618 • KIDSVIEW@REDWINGCOLLECTORS.ORG

# IN THIS ISSUE.....



PAGE 3	NEWS BRIEFS, ABOUT THE COVER
PAGE 4	CLUB NEWS, CONVENTION NEWS
PAGE 5	POTTERY MUSEUM OF RED WING NEWS
PAGE 6	RED WING MIXER BOWLS
PAGE 8	ROCHESTER'S QUEEN CITY CREAMERY CO.
PAGE 10	INTRODUCTION TO DINNERWARE: THE END OF THE LINE
PAGE 12	RWCS MEMBER ON "AMERICA UNEARTHED" & OTHER FUN NEWS
PAGE 13	2015 RWCS CONVENTION AUCTION SUBMISSION FORM
PAGE 14	CLASSIFIED ADS
PAGE 15	RECENT FINDS & DEALS
PAGE 16	WELCOME HOME, LITTLE BROWN JUG!

## MEMBERSHIP

A primary membership in the Red Wing Collectors Society is \$35 annually and an associate membership is \$15.

There must be at least one primary member per household in order to have associate membership. Members can pay for up to two years when renewing their membership. Contact the RWCS Business Office for additional details.

## NEWSLETTER EDITOR

RWCS MEMBER RICK NATYNSKI

PO Box 198

PEWAUKEE, WI 53072

NEWSLETTER@REDWINGCOLLECTORS.ORG • 414-416-WING (9464)

The Red Wing Collectors Society, Inc. Newsletter is published bi-monthly by the Red Wing Collectors Society, Inc. • 240 Harrison St. • Unit #3 • Red Wing, MN 55066.  
Phone: 651-388-4004 Fax: 651-388-4042



WWW.REDWINGCOLLECTORS.ORG



Postmaster: Send address change to: Red Wing Collectors Society, Inc. Newsletter  
PO Box 50 • Red Wing, MN 55066. USPS 015-791; ISSN 1096-1259.



Copyright © 2015 by the Red Wing Collectors Society, Inc. All rights reserved. The Red Wing Collectors Society, Inc. does not guarantee the accuracy of articles submitted by individual members.

Licensed to . Copyright Red Wing Collectors Society

# NEWS BRIEFS

## AUTHOR OF LITTLE BROWN JUG BOOK TO SPEAK AT CONVENTION

Ken Magee, co-author of the *The Little Brown Jug: The Michigan-Minnesota Football Rivalry*, will give the keynote presentation at this year's RWCS Convention. Magee's book contains more than 200 images that have been donated from the private collections of local sports enthusiasts, photographers and libraries. Many of the myths and stories that surround the famous Little Brown Jug trophy are examined and corrected, and various other tales are revealed for the first time.

Magee will bring a limited number of his books along for attendees to purchase after his presentation if they so wish. The cost is \$20 and a portion of the profits from sales are being donated to the Ken Magee Foundation for Cops, which enables police officers permanently injured in the line of duty and their families to attend Michigan football games, all expenses paid. If you think you might like to purchase one of these, please indicate it on your registration form so we can give Magee an estimate of how many to bring.



Magee

## 2015 CONVENTION: BRING YOUR EXCURSION JUG TO RED WING

The 2015 RWCS Convention (July 9-11) will mark the 100th anniversary of the Potters Excursion and longtime RWCS Member Steve Brown is organizing a reunion of the Potters Excursion jugs that Red Wing made to commemorate the event back in 1915. Anyone who owns one of these coveted pieces is asked to bring it to the Display Room, where a special display will include the jugs and some history about the Potters Excursion. Everyone who brings their jug for the display will receive a packet of historical information about the excursion.

As a side note, we're taking orders for the banners that line the streets of downtown Red Wing during Convention Week and we can help with your design if you'd like. Orders must be placed by May 15; call the RWCS office for more information. And finally, it's not too early to think about volunteering at Convention; every event needs help and no one will be turned away! Contact the office and RWCS Executive Director Stacy Wegner will add you to the volunteer list.



## CONVENTION LODGING INFORMATION

Have yet to book your room in Red Wing for Convention? Never been to Convention before and not sure where to stay? The 2015 hotel options and rates are available on the RWCS website at [www.ERWCS.ORG](http://www.ERWCS.ORG). We thank Arola Bach and her staff at the Red Wing Visitor and Convention Bureau for providing this information.

## CONVENTION COMMITTEE SEEKS YOUR INPUT

Would you like to help improve the RWCS Convention? The RWCS Board of Directors created a new committee focused on improving the Convention experience and appointed RWCS Display Room Chair Laura Beall as the committee head. Whether you have ideas for new events or changes to the schedule, please contact Laura (info on bottom of pg. 2) to join the committee or share your suggestions.

[WWW.REDWINGCOLLECTORS.ORG](http://WWW.REDWINGCOLLECTORS.ORG)

Licensed to . Copyright Red Wing Collectors Society



Above: The Minnesota (left) and Michigan sides of the Little Brown Jug Trophy. (Cover and above photos courtesy of Minnesota Athletic Communications.)

## ABOUT THE COVER

Known as one of college football's oldest traveling trophies, the Little Brown Jug is undeniably the best-known piece that the Red Wing Stoneware Co. ever made – even if a lot of non-collectors aren't aware of the jug's origin and the fact that it was never intended to become a trophy of any sorts. Last appearing on the cover of the *RWCS Newsletter* in October 2006, it's always considered newsworthy when the University of Minnesota Gophers win the jug back from the University of Michigan Wolverines, as Michigan leads the series 75-23-3. As Gopher fan and RWCS Member Mary Ellen Voracek reports in her story on the back cover of this issue, Minnesota did just that back in September, winning the game by the score of 30-14. The last time Minnesota won the jug was 2005.

There are likely more than a few collectors out there who cringe every time Minnesota and Michigan face off, knowing that unless there's a tie, a bunch of hyped-up football players in their early 20s are going to run around holding the jug high over their heads while screaming. Can you imagine how you'd react if someone came in your house and did that with one of the valuable jugs in your collection? As you can see when comparing the photo of the jug on the cover with the above left photo, which was taken back in 2005, the paint has gotten pretty dinged up over the past nine years.

There are a lot of conflicting stories when it comes to the history of the jug, but just so happens that this year's keynote presenter at Convention will be Ken Magee, co-author of *The Little Brown Jug: The Michigan-Minnesota Football Rivalry*. As discussed in the News Briefs at left, Ken is obviously well-versed on the topic. So, you can expect that he'll provide accurate details on the jug's history.

This issue also includes interesting stories on a family's quest to find a Red Wing Queen City Creamery advertising butter crock and the discovery of yet another line of early Red Wing kitchenware. And after five years, the Introduction to Dinnerware Series of articles comes to an end. We hope you enjoy this issue, and we look forward to sharing coverage of the 2015 RWCS MidWinter GetTogether in the April *RWCS Newsletter*.



# 2015 CONVENTION: EXCURSION TO RED WING JULY 9-11, RED WING, MINNESOTA



STACY  
WEGNER  
*Executive Director*

We just had a great time at the MidWinter GetTogether in Oconomowoc, Wisconsin! Since this issue went to print before MidWinter, the *April RWCS Newsletter* will cover happenings from the event. Now that MidWinter is behind us, it's time to set course for the 2015 Convention – your Excursion to Red Wing!

We have lots of exciting new things in the works for 2015 and we'd like your input for future Conventions. Want to learn about how you can be part of the RWCS Convention Committee? Contact committee chair Laura Beall at 605-464-5941 or [DISPLAY@REDWINGCOLLECTORS.ORG](mailto:DISPLAY@REDWINGCOLLECTORS.ORG).

This issue contains the 2015 Convention Registration and Auction forms. Display and seller contracts can be downloaded from the RWCS website or you can contact the RWCS office to have one mailed to you. Here's an early look at some of the things going on during this year's Convention: **RWCS Night at the Ball Park:** Did you know that that Red Wing has an amateur baseball team? They are playing during Convention Week on Tuesday, July 9 at

7 p.m. If you are in town early, consider coming out to the game at the Red Wing Athletic Field. The field is considered one of the most beautiful in the state. More info to follow in future newsletters!

**Crockfest!** Plans are in the works for many exciting additions to our Friday Night event, it's sure to be a home run! Local RWCS Member Todd Avery is on the team and we will share more details in upcoming issues and via the website. Be sure to bring your chair and join us.

**Little Brown Jug Keynote:** As you read on page 3, Ken Magee, the co-author of *The Little Brown Jug: The Michigan-Minnesota Football Rivalry*, will present the Convention keynote presentation on Thursday, July 9. Ken would like to get an estimate of how many books he should bring to the event, so if you think you might like to purchase one or more, please indicate it on your registration form so we can give him an estimate of how many to bring. The cost is \$20.

**KidsView & Young Collectors:** KidsView and Young Collectors Chairperson Linda Wippering is planning events for both groups and she's looking for volunteers to help with her program. There are lots of exciting new programs for both groups focused on the Potters Excursion. We had the wrong phone number for Linda in the last newsletter; you can reach her on her cell phone at 651-437-5618.

**New Banquet Location!** This year's Convention Banquet will be held at Mount

Frontenac Golf Course just south of Red Wing on Highway 61. The clubhouse offers a great bluff top view of the area and the Mississippi River. Come join us Saturday night for this casual and relaxing wind down from Convention.

**Highway 61 Improvements:** Red Wing will be beginning the Highway 61 Road Construction Project this summer. To help members get around Red Wing, the RWCS is working on maps and signs to guide you around. More information will follow when we know more.

**6th Annual Crock Hunt:** The Crock Hunt will begin the Friday before Convention and the forms will be online and in the RWCS office. If you are interested in helping with this event, the office could use a volunteer photographer in Red Wing.

**Hands on Education – New Piece Creations:** Local Potter Richard Spiller is returning to demonstrate his craft and he will again offer pottery classes at Convention in the cafeteria area. Members can sign up for these sessions with Stacy Wegner in the office for just \$40, which includes the class, materials for creating your own piece and shipping it following Convention.

**Volunteer Coordinator Needed:** We are looking for a member to assist with scheduling, contacting and coordinating volunteer positions at Convention. The primary duties can be done from your home with just an internet connection and e-mail. Please contact Stacy in the office to learn more.

## Wine-ing for Red Wing: What a Party!

*The bidding came with a flurry. The pickle crock was auctioned once and then donated back by four different buyers to be re-auctioned for a 5<sup>th</sup> and final time. At the end, a much-needed \$3,600 was raised for the Pottery Museum of Red Wing fund.*

It takes approximately \$8,500 per month to keep the museum running. Building payments are not included in this number. Wine-ing for Red Wing is one of the museum's largest fundraising events. The fundraising goal for the 2014 Wine-ing event was set at \$11,500. We fell short of that goal, and our \$10,000 net profit provided less than 10 percent of the annual overhead for the museum. The \$10 per person admittance fee charged in past years didn't cover the cost of the party.

This year's event will be a great jumpstart to your RWCS Convention Week experience. Mark your calendars and join us at 6 p.m. on Wednesday, July 8, 2015 for another spectacular event in support of the Pottery Museum. The admittance fee for the event will be \$20 per person and that will include a beer stein or a wine glass, two drink tickets and hors d'oeuvres. See you there! 🍷



# NEWS FROM YOUR POTTERY MUSEUM OF RED WING

Story by RWCS Foundation Board President Dave Hallstrom Photos by Pottery Museum Manager Robin Wipperling



It is hard to believe it was only a year ago when floor plans and final preparations were being made to finalize your new Pottery Museum of Red Wing! Starting as a vision and now a reality, your Pottery Museum has become a true “must see” destination in the city of Red Wing. It doesn't seem possible that today we are giving tours and greeting visitors from around the world. Once again, I can only say this has truly been a miracle thanks to the Schleich Family, hundreds of volunteers, thousands of volunteer hours and the generosity and support from all of you.

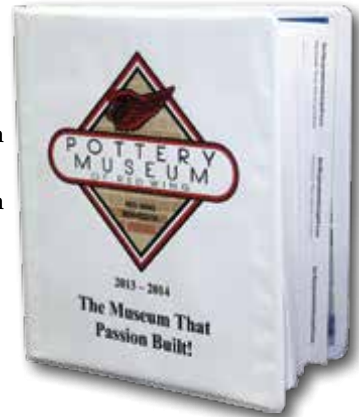
The New Year has been busy at the museum, even though the Minnesota winter has shown its strength. The slower months have allowed us to complete many necessary projects and planning. For example, we had poor insulation in the roof and tremendous ice dams that built up last winter. Fortunately contractors finished adding more insulation and cleaned ventilation strips throughout the entire building before the cold months. Not only we are now



much more energy efficient, but we no longer have the ice dams. We will also benefit from a wonderful gift that was given to the Senior Center side of our building. Pictured above, automatic door openers and hand railings were installed on the main entrance doors, now making us handicap accessible and ADA compliant. These were very expensive and truly a benefit for our visitors needing assistance at the main entrance.

Pottery Museum Manager Robin Wipperling has been very busy planning special classes for this upcoming spring. Volunteer experts will teach eight different classes through our Community Educational Program and can be attended by anyone who wishes to sign up. Topics will include: “Hands on Sweetheart Clay” by Richard Spiller, “Red Wing Dinnerware in Detail” by Steve Brown, “Preserving the Past” by Michelle Weismen, “Face Jugs” by Richard Spiller, “Collecting Zinc Glaze” by Steve Poeschl, “Vintage Red Wing Pottery” by Ron Linde, “The Early Red Wing Stoneware” by Larry Peterson and “Design Models in Mold Making” by Dave Hutchison. These classes will be held only once between January 24 and May 2. For dates, times and additional information, please visit the Pottery Museum's Facebook page or the Community Education page on our website: [www.rwps.org](http://www.rwps.org). Or, call Robin at 651-327-2220.

The RWCS Foundation has also compiled a great booklet packed full of information on the Pottery Museum for 2013-2014 titled *The Museum That Passion Built!* The book contains detailed museum financials, marketing, articles and information on moving the collection and the build outs that were involved. These booklets will be given to all RWCS Chapter Presidents and East & West Representatives-at-Large. If you have any questions about museum financials and activities, these booklets should give you the answers.



The Foundation Board and Pottery Museum of Red Wing would again like to thank you for all your continued generosity and support. Do you realize that because of your help you have:

- Paid off more than half of our building Contract for Deed?
- Built a museum that is a “World Class “ must-see destination?
- Attracted visitors from nationwide and Russia, Japan and Europe?

And **STOP THE PRESSES!** Just as this issue was being sent to the printer, we learned that the Pottery Museum of Red Wing won the “2014 Business of the Year” award for Arts & Entertainment, Lodging, Recreation & Tourism from the Red Wing Chamber of Commerce. This is incredible!! We'll have more to report on this great news in the *April RWCS Newsletter!*

## THE POTTERY MUSEUM OF RED WING ARCHIVE UPDATE

Story by Michelle Weisen

On Sunday, Jan. 11, the historic documents from the Red Wing Potteries were transferred to St. Catherine University. Approximately 10 graduate students under the direction of Professor Molly Hazelton inventoried the general contents of each box. The documents will be sorted into categories, transferred to archival files and boxes, and each file will be inventoried for content. This process will take one month and the documents are scheduled to be returned to the museum on February 7.

Our collection contains a variety of medium: plats, slides, audio CDs, photographs, newspapers, ledgers and various categories of paper. The collection is in remarkable condition except for the bindings of the original Red Wing Potteries Ledger, which are deteriorating. A plan to halt the deterioration and clean the bindings is underway.

A designated area has been chosen at the museum and a shelving system is currently underway. The system will accommodate the various materials in the collection to ensure proper storage. Our rare documents and the preserved ledgers will be stored in a safe. At that point, I will begin entering the information into Past Perfect, our museum program, and creating archival sleeves for our larger photographs.



# RED WING MIXER BOWLS

*Story and photos by* RWCS Member Brent Mischke,  
with contributions from RWCS Hall of Fame  
Members Terry Moe & Dennis Nygaard



Red Wing *mixer* bowls? That's right! At the 2013 RWCS Convention, longtime Red Wing pottery dump digger Dennis Nygaard showed shards of a previously unknown bowl during his education seminar on his dump finds. This large, 9-inch bowl exhibited a "Petals" design similar to other known Red Wing bowls. Later in 2013, Dennis showed me shards from a similar 6-inch bowl. This bowl had narrower petals and a raised foot rather than the flat bottom of the larger bowl.

Before we knew it, we located several complete examples of this style of bowl, but only in the 6- and 9-inch sizes. Questions about these bowls were answered by an eBay listing in early 2014. This listing showed a countertop electric food mixer paired with a set of these Red Wing "Petals" bowls. The company that produced the mixer was the Kwikway Mfg. Co. of St. Louis (see next page). So far, "Petals" mixer bowls have been found in off-white, yellow and medium blue glazes.

Other shards that Dennis had dug from the Pottery Road portion of the dump led to the discovery of a second style of mixer bowl. These have four "Rings" below the bowl's rim. Another eBay listing from September 2014 showed another Kwikway countertop mixer paired with a set of these "Rings" bowls. The glazes found so far in the "Rings" style of bowls are off-white, pale yellow and royal blue.

Many countertop mixer sets from the 1930s era included a reamer or juice extractor. Dennis, longtime dinnerware collector Terry Moe and others have dug shards from reamers that match both styles of RW mixer bowls. An example of a "Rings" style reamer was recently found, but the search continues for a complete reamer in the "Petals" style.

Documentation regarding the business relationship between the Red Wing Potteries and Kwikway has yet to be discovered.



**"Petals" Bowls:** The blue 6-inch and yellow 9-inch Red Wing "Petals" mixer bowls shown above are pictured with shards that Dennis Nygaard found when digging in the Pottery Road portion of the Red Wing Pottery Dump.

**"Petals" Reamer:** Reamer shards dug from Pottery Road match the Red Wing "Petals" mixer bowl set.

**Special Food Mixer** 25c

**KWIKWAY Electric Food Mixer**

Cuts kitchen labor in half. Mixes, beats, stirs, whips and mashes. Speedy, powerful, induction-type motor with no radio interference. Easy portability for use over stove or in any utensil. Removable beaters. Complete with two porcelain bowls. Attractively finished in green and yellow baked enamel. Sturdily constructed for long service and satisfaction. Attached Underwriters' Approved rubber cord and unbreakable rubber grip-pull plug. 70 watts, 115 volts.

**This Sale Only \$6.95**



**"Rings" Bowls:** A white 6-inch and blue 9-inch Red Wing "Rings" mixer bowl set pictured with a yellow shard from Pottery Road.



**"Rings" Bowls & Reamer:** A yellow Red Wing "Rings" mixer bowl set with a white reamer.



## KWIKWAY MANUFACTURING COMPANY

The Kwikway Manufacturing Co. was based in St. Louis, Missouri. During the 1930s, this firm produced a wide variety of small electrical appliances including irons, toasters, hair dryers and fans. They also produced countertop electric mixers. The newspaper ad from the *Salt Lake City Tribune* shown above shows a Kwikway mixer with a set of Red Wing "Petals" style mixer bowls. These sets have been found in newspaper ads from several different states between 1934 and 1938. The newspaper ad from the *Jefferson City Post-Tribune* on the opposite page shows a Kwikway mixer with the Red Wing "Rings" style of bowls. These sets have been found in ads from three different states dated 1939.

Other newspaper ads show that another St. Louis-area company, Knapp-Monarch, also may have paired their countertop mixers with both styles of Red Wing bowls. The "Petals" style bowls have been seen in ads from 1934 and 1936, and the "Rings" style bowls have been found in ads dated 1939, 1940 and 1942. A Knapp-Monarch mixer set still needs to be found to confirm this association. 🐾





**Deliveries by horsedrawn carriage:** Patrick O'Malley (far left) poses outside his business with his secretary Besse Morse and two other employees. (Three if you count the horse.)



**O'Malley & Crew:** Patrick O'Malley (far left) stands with some of his employees inside the creamery.



*Story by* Doreen (O'Malley) Evans

Thanks to the strong work ethic of three generations of the O'Malley Family, we have a history that's deeply rooted in the community of Rochester, Minnesota.

It all began in the late 1800s, when my great grandfather, Patrick O'Malley, was born to Irish immigrants who had moved to America in the 1870s without knowing how to read or write. In 1909, he went to work for Eaton's Creamery as a bookkeeper. Then he bought the business in 1913 and changed its name to Queen City Creamery. He also got married and purchased a house on the prestigious College Street in Rochester – all in the same year.

Located on 1st St. NW, Queen City Creamery was family-run business. In addition to my great grandfather, my Grandpa Claude O'Malley and my dad Duane O'Malley had also worked there over the years.

On a normal day, they started churning butter at 4 a.m. and finished by about 7:30 a.m. – making between 700 and 800 pounds each day. It was then taken out of the huge churns and packed into shipping tubs or square boxes with false bottoms. The butter was then placed into one pound molds and wrapped – ready to be shipped to Chicago and New York for consumption in hotels and restaurants. The creamery only used Jersey cows, which were considered to be the premium breed because they had a lot of cream in their milk.

Ice cream was manufactured before customers' eyes in the front of the office; it was called "Super Creamed", which was a registered name that had exclusive use in the state of Minnesota. It was sold in the city of Rochester and the surrounding villages of Olmsted and Fillmore counties, offering 15 different flavors every week.

By 1938 Queen City Creamery had become the oldest creamery running in Rochester. In 1951 my grandfather discontinued the creamery side of the business and sold the building, opening a new storefront on 2nd street in Rochester. There he owned and operated the Queen City Dairy Bar ice cream parlor until 1957.

My dad, Duane, was always on the lookout for anything Queen City Creamery related. He rarely missed local Rochester auctions and acquired many different items over the years. But one thing he was never able to find was a Red Wing Queen City Creamery advertising crock. So when he passed away in fall of 2010, I took up the torch and began my own quest.

I shared the same luck as my dad until the summer of 2013, when I was visiting my in-laws and just so happened to pick up the June 2013 *Red Wing Collectors Society Newsletter*. Leafing through it, I glanced at the auction bills for Convention, even though I wasn't planning on attending because I had to work. Reading it through thoroughly, I came upon a picture of a Queen City Creamery advertising crock. I was shocked! Why had I picked up that newsletter? And why had I looked over that particular auction? Dad.

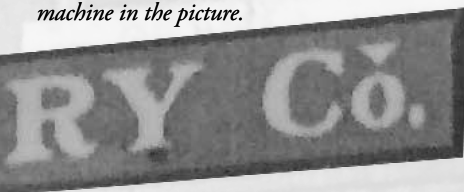
I went to the auction, not telling anyone because I wasn't sure I was going to win it. When it came time for the crock to cross the block, I stood up in the back because that's what my dad used to do. And I did not want to be missed. The bidding was immediately fast and furious across the room. I remember thinking, "Oh my gosh. I am not going to get it!" However, while my mind was racing, I never put my arm down. It felt like a lifetime, but I won the crock!

Then the emotions set in and with tears in my eyes, I accepted the crock from auctioneer Dick Houghton, who was a friend of my





**Family treasures:** Patrick O'Malley sits inside the Queen City Creamery office in March of 1915. The family still owns the desk and adding machine in the picture.



**Below:** Queen City Creamery's float won 1<sup>st</sup> place in the city of Rochester's 4<sup>th</sup> of July parade in 1922.

dad's. He congratulated me and I said, "I don't know if you know who I am." He responded with, "I know who you are."

I sat back down, had a picture taken of me holding the crock and immediately sent it to my family to show what I found. Then different people in the room approached me, curious about how I was connected to the crock. The last man said, "Well, you know there is another one on tomorrow's auction." No, I didn't know that! He could have knocked me over with a feather with that information.

I quickly called my sister, Diane, and surprised her with the news. She immediately said, "I'm coming down and we're getting that one also." After another nervous and emotional day of waiting, she was the winning bidder.

So our dad spent the better part of his adult life searching for one of these crocks, and we acquired two separated by less than 24 hours. What are the odds? What a gift.... Thanks, Dad. 🍷🍷



**Sister Sister:** Diane O'Malley Franklin (left) and Doreen O'Malley Evans (right) pose for a photo outside Bluffs Bar & Grill in Hager City, Wis. on July 10, 2013 after winning the second of their two Queen City Creamery advertising crocks.





© Copyright 2015 Terry Moe and Larry Roschen  
Photos courtesy of the authors and  
WWW.REDWINGDINNERWARE.COM

# Red Wing Dinnerware & the End of the Line

Five years and more than 17,000 words since the first article in this series appeared in the December 2009 issue of the Red Wing Collectors Society Newsletter, the *Introduction to Dinnerware Series* comes to an end. A big "thank you" goes to the authors, RWCS Hall of Fame Members Larry Roschen and Terry Moe, for sharing their immense passion and vast knowledge of Red Wing dinnerware with fellow Red Wing collectors.

## THE END of Red Wing Dinnerware Production

A fair amount of greenware (unfired pottery) remained in the Red Wing Potteries plant after workers left in mid-1967. The remaining staff applied whatever glazes were on hand to the greenware. Beige fleck, the background color for Bob White and other patterns, is the glaze most commonly found on these end-of-production items. Unfinished pieces that should have been glazed with multiple colors but received only the base glaze were fired as-is. These odd-colored items were sold to the public at the Red Wing Pottery Salesroom, a business that originally sold Red Wing's seconds and surplus stock before morphing into a store that continues to sell wares from a variety of vendors. Today a collector can find a variety of authentic Red Wing dinnerware in non-standard colors. The values for these items vary considerably. Some are worth very little, while one-of-a-kind items can have significant value. As with all collectibles, the value is in the eye of the beholder.



**Left:** 7-inch green Ceramastone salad plate black rim.  
**Above:** DuoTone beige fleck gravy base with Pepe cover.  
**Right:** Buffet Royale salt & pepper in beige fleck.



**Above:** 1 quart Futura pitcher in beige fleck (left) and True China teapot in beige fleck. **Below:** All brown 10-inch Ceramastone dinner plates (left) and orange 10-inch Ceramastone dinner plates missing brown rim.



Tidbit trays have long been a source of controversy among collectors. They were made by drilling a hole in the center of a plate or bowl, then placing a metal handle through the hole. Similar hardware was used to connect two or three pieces together into a multi-tiered tray. Some consider these to be an integral part of a dinnerware set, while others consider them to be dinnerware pieces ruined by the hole. Red Wing offered tidbit trays during the late 1950s and 1960s in various "Novelty and Gift" brochures. These brochures also depicted other dinnerware-like items that weren't a part of any dinnerware pattern. One brochure offered tidbit trays in two-tiered and single-tiered configurations in "assorted patterns". In other words, the buyer couldn't order a tray in a specific pattern. This was because tidbit trays were made from whatever surplus stock was on hand at the time. Tidbit trays continued to be assembled and sold at the Red Wing Pottery Salesroom long after production ceased.



**Left:** 1-tier Rose sauce bowl tidbit.  
**Right:** 2-tier Mediterrania tidbit (top) and a 3-tier Crazy Rhythm tidbit.



**Above:** 2-tier Chuckwagon tidbit (left) and 2-tier Flight tidbit with bowl. **Below:** A grouping of Lotus tidbit trays.



Licensed to . Copyright Red Wing Collectors Society





**Above:** "Hobby Shop" Casual beverage server. **Below:** Amateur cookie jar from the Casual mold.



## POST-PRODUCTION ITEMS from old Red Wing molds

After Red Wing Potteries ceased production in 1967, most of the company's assets were sold to the public, including the molds used to form dinnerware and art pottery. Art schools and amateur potters obtained many of these molds. There was no effort on Red Wing's part to remove or obliterate the Red Wing name from the molds since the company was no longer in business and had no interest in maintaining copyright protection. Thus it is quite common to find amateur or hobby shop pieces made from Red Wing molds with the Red Wing name on the bottom.

An experienced collector will learn to differentiate authentic Red Wing pottery from post-production pieces. Color is an important clue. Red Wing test and "Lunch Hour" pieces usually used glazes available in the shop. A "Red Wing" item in colors not seen on other Red Wing pieces is probably a "Hobby Shop" piece. Bright, garish colors and wild designs that don't have the Red Wing "look" are another clue, although Red Wing also made items on occasion that would fit that description. Weight can be another telling factor. Amateur pieces are often made of lightweight clay; if an item weighs considerably less than a comparable Red Wing piece, it probably is not authentic. It's also possible to find amateur pieces that are heavier than the genuine Red Wing piece. Finally, pottery that has information scratched into the bottom is almost certainly not vintage Red Wing. Amateur artists and art school students usually scratch their name or initials and a date into the wet clay on the bottom of the piece. This practice is not found on authentic Red Wing dinnerware. Red Wing test pieces usually have hand drawn code numbers in ink on the back; they may also have color swatches. Lunch hour dinnerware is usually signed or initialed and dated by the artist in ink or with colored glaze on the back. **Left:** "Hobby Shop" Ceramastone covered casserole. **Right:** "Hobby Shop" Casual creamer and 1 qt. Futura pitcher (far right).



Beverage server and cups from Duo-Tone Line molds. The inset at right shows the bottom of the server.



## OWNER-ENHANCED Red Wing Dinnerware

Authentic Red Wing items that have been "enhanced" by the owner are another potential source of confusion for collectors. Most of these involve the use of cold paint over the glaze to decorate an item. These can be confused with lunch hour or test pieces, but any artwork on those would be under the glaze. If the decoration can be scraped off, it's almost certainly an owner-enhanced piece. Shown at right are two such pieces – a cold-painted Town & Country syrup jug and a cold-painted Gypsy Trail Hostess Ware pear cookie jar (far right).



## RECENT DISCOVERIES

Three old dinnerware patterns have been documented and attributed to Red Wing since this series of articles began five years ago. They were not included in this series; however articles about them have been published in past issues of the *Red Wing Collectors Society Newsletter*. "Pansy" was introduced in the October 2012 issue and "Red Wing Colored Kitchenware" was featured in the October 2014 issue. Finally, "Red Wing Mixer Bowls" is featured earlier in this issue.

## ADDITIONAL DOCUMENTATION SOUGHT

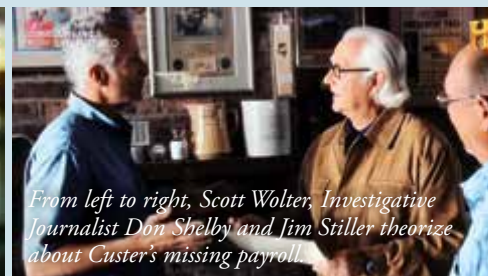
We're looking for additional vintage Red Wing documents to fill the gaps in our timeline. We are particularly interested in documentation for the Wreath and Pansy patterns and in price lists dated 1941 to 1948, 1953, 1955 and 1964. If you have access to such documents and you wish to sell them or are willing to share a photocopy, please contact Larry at [REDWINGLR@AOL.COM](mailto:REDWINGLR@AOL.COM) and Terry at [TMMOE@GYPSYTRAIL.NET](mailto:TMMOE@GYPSYTRAIL.NET).

## STILLER APPEARS ON THE HISTORY NETWORK H2 CHANNEL'S "AMERICA UNEARTHED"

Longtime RWCS Member Jim Stiller, the owner of Excelsior Coins & Collectibles in Excelsior, Minn., made his television debut in December when he appeared on the History Channel's "America Unearthed". In the show, Minnesota-based Forensic Geologist Scott Wolter uses science and research to attempt to explain mysterious artifacts, sites and American legends, such as pre-Columbian contact theories and tales of treasure hidden in the Grand Canyon. Stiller says he and Wolter became good friends years ago because of their shared interest in collecting Lake Superior agates.

"Scott called me last summer and said he needed to speak with a coin dealer on his show who could give him information on the types of coins that Col. George Custer might have been carrying at the time of his Last Stand," Jim says. He agreed, and two segments were filmed for the show – the first during the week before the 2014 RWCS Convention, and the other at the end of July.

In the episode titled "Custer's Blood Treasure" that aired Dec. 6,



From left to right, Scott Wolter, Investigative Journalist Don Shelby and Jim Stiller theorize about Custer's missing payroll.

Wolter investigates a legend that Indians looted Custer of his cavalry's payroll after the ill-planned Battle of Little Big Horn. Gold and silver coins likely valued at \$25,000 at the time, the payroll would be worth as much as \$500,000 in cash today, and far more to collectors of Custer-related artifacts.

"The whole thing was pretty overwhelming," Jim explains. "In addition to Scott, I had the director, producer, sound guy and lighting guy in my shop, and they only gave me about 5 minutes to learn my lines. It was a fun experience though, and you could see a bunch of Red Wing stoneware in the background. I got a lot of calls from friends and fellow Red Wing collectors after the episode aired."

## COWS INVADE DOWNTOWN RED WING

As written by *Minneapolis Star Tribune* ace reporter Jennifer Brooks, "Downtown Red Wing was a scene of udder gridlock" in early December when a small herd of cows escaped their trailer and roamed around Main Street.

According to the online article, Red Wing police received a report of stray livestock on Main Street around 10:45 p.m. on Wednesday, Dec. 3. There they found half a dozen Holsteins wandering the intersection of Highway 61 and Plum Street.

It turns out that a farmer was driving through town that night when the latch on his trailer gate opened and six of his cows emerged to take a walk along Main Street. Unaware of the breach, the farmer made his way home to Hager City, Wis. Upon arriving on the scene, three officers became amateur wranglers, parking their cars around the cows and corralling them into a nearby parking lot. The farmer



This photo from the Red Wing Republican Eagle website was taken by Jeffrey Chandler of Red Wing.

returned to the scene after he called police to report his missing cows.

*Note to RWCS Commemorative Manager Bob Morawski: Recreating this scene in stoneware would make a pretty sweet 2015 Commemorative.*

## CHILD TRAPPED IN RED WING CROCK (BUT NOT ONE OF THESE KIDS!)

Attention, Kids! There's a right way and a wrong way to play inside Red Wing crocks. Unfortunately, a young girl learned the hard way how not to do it last summer when visiting her grandmother in Rochester, Minn.

According to a story posted on the *Rochester Post Bulletin* website, the Rochester Fire Department received a call one afternoon last August about a 6-year-old girl who was stuck in "a crock pot". When firefighters arrived at the home, they found the girl had knelt down inside a "clay crock" and had become stuck.

The girl's grandmother couldn't lift her out, even after trying oil as a lubricant. She called the fire department after trying for 40 minutes to get her out.

Firefighters were able to lift the girl out of the crock by folding her legs down. She was not injured, although she likely developed a life-long fear of stoneware – a.k.a. "crockophobia". It's already a challenge to get young people interested in collecting Red Wing... the last thing we need to deal with is child-eating crocks.

*innappropriate, "Kid Stuck in Crock" could be another idea for a Commemorative.*

But never fear, Red Wing Fans! Fortunately RWCS members are teaching their own kids and grandchildren how to correctly play inside Red Wing stoneware. The key to fun? Using big enough crocks, of course! RWCS Member Mary Rogge sent in this photo of her granddaughters and great grandson playing in a set of 30 gallon crocks.



"We use these three crocks as toy chests to store the kids' stuffed animals," Mary says. "But when the two granddaughters, Brookelynn and Kherington, get together with great grandson, Max, all the animals are thrown out. They can play for hours back there. So instead of being a home for the stuffed animals, it's home for the kids." 🐻

*Another note to Commemorative Manager Bob: Albeit somewhat*

**Licensed to . Copyright Red Wing Collectors Society**





# 2015 Auction

INFORMATION AND SUBMISSION FORM

July 9-11, 2015

Red Wing High School  
Red Wing, MN

## RETURN FORM BY MAY 15, 2015

THE RWCS AUCTION IS OPEN TO THE ENTIRE MEMBERSHIP. EVERY MEMBER MAY SUBMIT AN ITEM FOR THE AUCTION. ALL ENTRIES ARE STILL SUBJECT TO THE LOTTERY.

### COMMISSION STRUCTURE IN 2015

Items selling up to \$100 will be assessed a \$20 minimum commission, all other items will have a 10% commission.

### RESERVE OPTION for submissions minimum value of \$1,000 conditions:

1. \$1,000 minimum price on reserve items
2. 10% commission on those items that sell, to the RWCS or \$100 fee to the RWCS in lieu of commission if the item does not hit reserve price and does not sell.
3. The Auction Manager can reject the reserve option if the item has a value greatly less than \$1,000.

**Second Piece Submission Process:** Members may submit a second piece to the auction by marking as "SECOND" on their submission form. In the event that the auction lottery results in remaining lots, the Auction Manager will randomly choose from the "SECOND" submissions until the auction is filled.

A limited number of RWCS Commemoratives will be allowed from 1977 to 2013, no 2014 Commemoratives will be allowed. Chapter Commemoratives can only be submitted by Chapter Presidents for the most recent year.

You or another RWCS Member registered for Convention must bring your piece to Convention. You cannot ship your item to the RWCS Executive Director or the Auction Manager.

Once your item is drawn in the lottery, no substitutions will be allowed. Multiple items allowed include RWCS Commemoratives or Dinnerware Sets. No altered pieces may be submitted. All items must be in their original form.

Acceptable items are American Pottery including: Red Wing Art Pottery, Stoneware, Dinnerware, or Red Wing Memorabilia. Modern-day reproductions are not allowed. Example: New Water Cooler Lids, etc.

**Remember to bring your SASE** (self addressed stamped envelope) **with you when you drop off your auction item.** Auction checks will be mailed out the week after Convention. Auction Check not cashed within 90 days after Convention will be voided.

**When mailing your submission, make sure your membership is current. No member with an expired membership will be allowed to have a piece in the Auction.**

The lottery will be conducted the end of May and you will be notified by mid-June by **POST CARD** if your item(s) has been selected; the number your piece has been assigned in the Auction Catalog will also be provided. If your item was **not drawn** in the lottery, you will receive an **POST CARD** advising you of such.

### REMINDER! NO AUCTION SUBMISSIONS WILL BE ACCEPTED VIA EMAIL!

Please remember, you are sending a registration form far in advance of the July Auction. Be prepared to hold your piece until you are notified in mid-June that it has or has not been selected. **BE CAREFUL!** If your item has been confirmed for the Auction, but does not show up at Convention, you will forfeit your Auction privileges for 2016.

We strive to prevent NO-SHOWS. If you are in doubt about whether or not your piece has been selected in the lottery, please call the Auction Manager **DIRECTLY** at 707-477-8968 or email at [auction@redwingcollectors.org](mailto:auction@redwingcollectors.org). Do not call the RWCS Business Office. We would rather have phone calls than no-shows.

YOU ARE ENCOURAGED TO INCLUDE A PHOTO WITH YOUR SUBMISSION FOR MARKETING AND PROMOTION THE 2015 AUCTION.



2015 Auction Item Registration Form  
July 9-11, 2015 Red Wing High School Red Wing, MN

POST MARK BY:  
MAY 15, 2015

PLEASE READ THE AUCTION GUIDELINES ABOVE BEFORE YOU COMPLETE THIS FORM!

☐ CHECK HERE IF THIS IS A RESERVE ITEM (Items that don't meet reserve are subject to a \$100 fee)  
RESERVE PRICE (\$1,000 minimum)\$ \_\_\_\_\_

☐ CHECK HERE IF THIS IS A SECOND PIECE SUBMISSION

NAME: \_\_\_\_\_ MEMBER #: \_\_\_\_\_

EMAIL: \_\_\_\_\_ PHONE: \_\_\_\_\_

ADDRESS/CITY/STATE/ZIP: \_\_\_\_\_

ITEM DESCRIPTION: \_\_\_\_\_

CONDITION: \_\_\_\_\_

AUCTION MANGER: BRUCE SELFRIDGE PO BOX 812 CLOVERDALE, CA 95425  
AUCTION@REDWINGCOLLECTORS.ORG 707-477-8968

Licensed to . Copyright Red Wing Collectors Society

Classified ads are 20¢ per word for members and 30¢ per word for non-members; \$4 minimum charge and are accepted on a first-come, first-served basis. In addition to appearing in the newsletter, classifieds and display ads are posted on the RWCS website.

Ads are divided into the following sections: Red Wing For Sale, Red Wing Wanted, Other Pottery For Sale, Other Pottery Wanted, Events, Auctions, Clubs & Publications and Websites, Announcements and Services. You will not be charged for these words, but please indicate which section your ad should be placed in. If ad is to run in more than one issue, please indicate at time of placement. (Note: the small number at the end of an ad tells when the ad expires, e.g., 4/12. Ads without dates are one-time ads.) Please type or print clearly and proofread before submission.

#### DISPLAY ADS

Display Ad Size	1x	6x
Full page	\$425	385
1/2 page ( <i>horizontal or vertical</i> )	225	205
1/4 page	125	115
1/8 page	85	70

Display ads purchased by non-members cost an additional 15%.

#### Display Ad Dimensions

Full Page	7 1/2 x 10
1/2 page ( <i>horizontal or vertical</i> )	7 1/2 x 4 7/8
1/4 page	3 5/8 x 4 7/8
1/8 page	3 5/8 x 2 1/4

Display ads are accepted on a first-come, first-served basis. The publisher reserves the right to refuse ads for any reason.

Ads must be supplied electronically as an EPS or PDF file for PC. If you are unsure about acceptability, inquire with the editor. There is an additional 10 percent fee for design and makeup if needed (\$10 minimum).

#### DEADLINES

Issue	Ads	Editorial	Mail Date
February	Jan. 10	Jan. 1	Feb. 15
April	March 10	March 1	April 15
June	May 10	May 1	June 15
August	July 25	July 15	Aug. 31
October	Sept. 10	Sept. 1	Oct. 15
December	Nov. 10	Nov. 1	Dec. 15

#### EDITOR ADDRESS

Make checks payable to RWCS and mail with ads:

Rick Natynski  
PO Box 198  
Pewaukee, WI 53072

Can also submit ads by e-mail: send to [NEWSLETTER@REDWINGCOLLECTORS.ORG](mailto:NEWSLETTER@REDWINGCOLLECTORS.ORG) and send checks separately. Or, call Rick at 414-416-WING (9464).

#### RED WING FOR SALE

For sale: 1 gallon large wing crock, excellent condition, \$425; 3 gallon Imperial shoulder jug with wing, excellent condition, \$325. Will consider trades for Canadian Red Wing advertising. Contact Kelly in Canada at [CCCLECTOR@GMAIL.COM](mailto:CCCLECTOR@GMAIL.COM) or 204-981-9616.

For sale: RW sponge baking dish with "Akron Feed Mill, Akron, IA" advertising. Mint. Books for \$350-\$425. Looking for fair offer. Contact Doug at [DD.EVANS@CHARTER.NET](mailto:DD.EVANS@CHARTER.NET) or 320-290-3194.

For sale: Two 25 gal RW squatty double birchleaf crocks (one black ink, one blue), \$365 each. 10 gal hand-turned Union Stoneware water cooler w/wing ("10" on inside) and 10 gal button knob cooler lid, \$1,450. All in good condition. Call Tom in McFarland, Wis. at 608-838-8926.

For sale: Commemoratives: 1991, 1992 (2), 1993 (2), 1995, 1997, 1998, 1999. Wisconsin Chapter Commemoratives: 1992, 1993, 1996, 1997, 1998. Marmalades: 2 pineapple with tray/lid – 1 yellow, 1 turquoise. 4 apples with tray/lid – 2 pink, 2 turquoise. 1 pear with lid/tray, turquoise. 1 pear with lid, turquoise. Belle Kogan 100 #762 7.5" copper. Capistrano casserole dish with lid (green bottom, light pattern top). Fancy Free (desert) beverage server with lid. Incised peasant design munch jar (light stone color). Animal novelties: #879 brown fish, #876 white donkey, #880 matte green pelican. #734 9.5" birch bark canoe. All items mint. Call Patricia at 608-924-3322. 4/15

#### RED WING WANTED

Wanted: 3 gal shoulder jug with blue birchleaf without oval. Contact Roy at 574-533-5266 or [DOROKEIM@BNIN.NET](mailto:DOROKEIM@BNIN.NET).

Wanted: I am interested in purchasing the All Star Brand horseradish jar as pictured. Please contact me with your price and how to make arrangements for the purchase. My email address is [TCK822@AOL.COM](mailto:TCK822@AOL.COM).



Wanted: Mini and salesman sample flower pots. Contact [COBE142@COX.NET](mailto:COBE142@COX.NET) or 402-331-4749.

Wanted: All blue panel sponge bowls in the 5", 7" and 10" sizes; must be mint. Also looking for "Drop-8" crocks in the following sizes 2, 3, 4 & 10 gallon. Contact Chris at 316-708-5272 or [CCTINCHER@GMAIL.COM](mailto:CCTINCHER@GMAIL.COM).

Wanted: NORTH DAKOTA! Looking for jugs, crocks, butter crocks and churns with advertising. Will pay top dollar for the right pieces. Contact [BEEHIVE@POLARCOMM.COM](mailto:BEEHIVE@POLARCOMM.COM) or 701-270-0242.

Wanted: These Xmas advertising bean pots: Kohnke's - Clear Lake, SD; Sinai Elevator Co, Sinai, SD; and Gjermundson Bros Hdwe - Wittenberg, WI. Any condition considered. Also looking for 9-inch blue and white panel bowl. Will consider any condition. Call 414-731-0218 or e-mail [REDWINGR@GMAIL.COM](mailto:REDWINGR@GMAIL.COM).

Wanted: Red Wing #687 & M3006 blue/green Chromoline vases in mint condition. Contact Rick at 414-416-9464 or [NEWSLETTER@REDWINGCOLLECTORS.ORG](mailto:NEWSLETTER@REDWINGCOLLECTORS.ORG). Also seeking mint #675 blue/green Chromoline bowl. Will also buy damaged Chromoline.

#### EVENTS

Elkhorn Flea Market, Walworth County Fairgrounds in Elkhorn, WI. Sundays: May 17, June 28, Aug. 9 and Sept. 27. More than 500 quality dealers! For information, visit [WWW.NLPROMOTIONSLLC.COM](http://WWW.NLPROMOTIONSLLC.COM).

#### MEMBER PASSING

Longtime RWCS Member Bernice Schwartau of Red Wing, died at age 90 on Dec. 11, 2014. She is preceded in death by her husband of 66 years, John; two sisters and a brother.



Bernice and John farmed from 1946 to 1980 and research on their farm contributed to GPS GIS use for fertilization and yield mapping use in farming today. Active in St. John's Lutheran Church, she devoted her life to family and the wider community giving leadership and service in areas of health care, political campaigns, agricultural and historical efforts. She and John conducted research and fundraised for the John Paul/Red Wing Pottery Industry Historical marker on Highway 58. They also collected tools and gave rope-making demonstrations.

Bernice was also co-founder and coordinator of the St. John's Hospital Surgical Hostess Program and Chair of its Legislative Committee. She is survived by her daughter, Judy Schwartau, and brother, Donald F. Gustafson, along with many nieces and nephews.



# RECENT FINDS & DEALS

Did you find a rare piece or a great deal worth sharing? Briefly describe the item, where it was sold, date purchased, venue (store, auction, etc.) and price paid. Send to editor Rick Natynski on a post card, e-mail [NEWSLETTER@REDWINGCOLLECTORS.ORG](mailto:NEWSLETTER@REDWINGCOLLECTORS.ORG), or enclose in an envelope if you'd like to include a photo for publication. Multiple submissions result in multiple entries in the Newsletter Special Commemorative Lottery at the 2015 Convention. All newsletter submissions received between July 2014 and June of 2015 are eligible whether published or not. Please keep submittals with purchase dates within six months of the newsletter issue.

ITEM	LOCATION	DATE	VENUE	PRICE
Brushed ware vase bottom-signed "Saxon Red Wing Minn"	Amery, WI	10/14	Auction	\$250. <sup>00</sup>
2 RW hand-turned Albany slip mini jugs (1/8 pint and 1/16 pint)		11/14	eBay	\$92. <sup>94</sup> (shipped)
3 mini jugs, (one RW, 1/4 pint)		11/14	eBay	\$15. <sup>32</sup> (shipped)
Medium-sized RW cherryband pitcher with Centuria, Wis. advertising	Midwest	11/14	Antique shop	\$90. <sup>00</sup>
Red Wing Continental Buffet 2 quart casserole with lid, mint		12/14	eBay	\$175. <sup>00</sup> (shipped)
50 gallon Red Wing crock, spigot hole in back	Crown Point, IN	1/15	Auction	\$800. <sup>00</sup>
20 gallon RW butterfly crock, handle chip	Walnut, IA	1/15	Antique mall	\$1500. <sup>00</sup>
5 gallon RW "single-P" churn, hairline	Walnut, IA	1/15	Antique mall	\$324. <sup>00</sup>



## OUTSTANDING STONEWARE AUCTION

**Saturday, April 18<sup>th</sup>, 2015 – 9:30 am • Rock Falls Community Center**

**Rock Falls, Iowa (7 miles NE of Mason City, Ia.)**

Preview: Friday, April 18<sup>th</sup>, 3 pm – 6 pm NO BUYER'S PREMIUM

For our Online Auction Catalog, check our website: [www.seeckauction.com](http://www.seeckauction.com).

**Absentee bidding is available** on-line through Auction Flex using our online catalog.

**Online absentee bidding closes Friday, April 17<sup>th</sup> at 9:00 pm CST.**

**The late Gene Sander's Collection and others.**

Red Wing including Salt Glaze, Coolers, Butter Churns, Crocks and Advertising;  
Blue and White Stoneware; Illinois Stoneware; Watt Pottery and other great pieces!

**Terms:** Cash or Check, VISA and MasterCard accepted  
w/proper ID. Statements made day of sale take  
precedence over any printed ad.

**Seeck Auctions**

Licensed to - Copyright Red Wing Collectors Society

Jim and Jan Seeck

641-424-1116 • [jimjan@seeckauction.com](mailto:jimjan@seeckauction.com)



## WELCOME HOME, LITTLE BROWN JUG!

*Story by* RWCS Member Mary Ellen Voracek  
*Photos courtesy of* Minnesota Athletic Communications

One of the most recognizable pieces of Red Wing Stoneware is home again! To Red Wing collectors and Minnesota football fans, this means the University of Minnesota defeated the University of Michigan for the right to keep the Little Brown Jug until the next meeting of the two teams. This is college football's oldest rivalry trophy game.

My husband Ron and I have seen many Minnesota/Michigan football games, but never one in Michigan. Finally this would be the year! The game was scheduled for September 27, 2014. Nature's fall colors of red, orange and gold were vibrant as we drove through Wisconsin and Michigan to Ann Arbor.

Game day morning greeted us with a beautiful blue sky, temperature in the 70s, and excitement in the air – a perfect fall football day! We arrived on campus hours before game time to enjoy the sights and sounds of the big game rivalry. After all, this was the “Big House” – one of college football's most revered stadiums.

Finally – game time! Gopher fans in maroon and gold sat together in warm sunshine high in the 109,001-seat stadium. The team looked ready – this would be our year! At halftime, Minnesota was leading 10-7. We were playing with confidence and excitement was high. At the end of the 3rd quarter, we led 27-7. Only 15 minutes more to victory – we could do it! The clock was now our friend.

The golden sun was low in the western sky as the final seconds on the game clock ticked down. The numbers on the scoreboard – Minnesota 30, Michigan 14 – echoed the hushed quiet of more than 102,000 Michigan fans. The team rushed to claim the coveted prize.

Gopher fans moved quickly and jubilantly down the aisles to the corner of the field where our team and coach had arrived with the treasured jug to share the victory celebration. It was official – the Little Brown Jug was coming home! Yes, it was a trip worth waiting for.



*Minnesota senior Cedric Thompson, Jr. holds the jug high, while Head Coach Jerry Kill celebrates the win with fans.*

## COMING IN THE APRIL ISSUE...



MIDWINTER REVIEW

JOHNNIE'S  
ROOT BEER



Licensed to . Copyright Red Wing Collectors Society

WWW.REDWINGCOLLECTORS.ORG