

RED WING COLLECTORS SOCIETY



Red Wing
Collectors Society Inc.
Founded 1977

VOL. 41 #4

AUGUST 2016

NEWSLETTER

CELEBRATING 40 YEARS OF COLLECTING

10



10



SEEING
DOUBLE

Convention
Jaw Droppers
5

Auction
Highlights
11

Museum
News
12-13

Licensed to . Copyright Red Wing Collectors Society

RWCS CONTACTS

BUSINESS OFFICE

PO Box 50 • 240 Harrison St. • Unit #3
Red Wing, MN 55066-0050 • www.redwingcollectors.org
651-388-4004 or 800-977-7927 • Fax: 651-388-4042
EXECUTIVE DIRECTOR: STACY WEGNER
director@redwingcollectors.org
membership@redwingcollectors.org

NEWSLETTER

EDITOR: RICK NATYNSKI
PO Box 198 • Pewaukee, WI 53072
414-416-WING (9464) • newsletter@redwingcollectors.org

BOARD OF DIRECTORS

PRESIDENT: PAUL WICHERT
W247S7000 Sugar Maple Dr. • Waukesha, WI 53189
414-731-0218 • vicepresident@redwingcollectors.org

INTERIM VICE PRESIDENT: MIKE STENSTROM
6204 Shawna St. • Weston, WI 54476
715-218-8216 • vicepresident@redwingcollectors.org

SECRETARY: ANGELA SHEFVELAND
905 Hawthorn St. • Red Wing, MN 55066
816-456-2524 • secretary@redwingcollectors.org

TREASURER: DAN BECK
2215 Hill Place SW • Rochester, MN 55902
507-398-6358 • treasurer@redwingcollectors.org

HISTORIAN: NANCY LAMBERT
17 Newcastle Lane • Bella Vista, AR 72714
785-691-7213 • historian@redwingcollectors.org

REPRESENTATIVE AT LARGE: RUSSA ROBINSON
1970 Bowman Rd. • Stockton, CA 95206
209-463-5179 • repatlargewest@redwingcollectors.org

INTERIM REP. AT LARGE: RICHARD NATYNSKI
N50 W25078 William Dr. • Pewaukee, WI 53072
608-617-7424 • repatlargeeast@redwingcollectors.org

AUCTION MANAGER: SCOTT HARDMAN
430 N Manley Rd. • Ripon, CA 95366-3405
209-602-1461 • auction@redwingcollectors.org

COMMEMORATIVE MANAGER: BOB MORAWSKI
2130 S. Ridgeway Dr. • New Berlin, WI 53146
262-853-8269 • commemorative@redwingcollectors.org

EDUCATION MANAGER: MICHELLE WEISEN
605 Bluff St. • Red Wing, MN 55066
507-254-2210 • education@redwingcollectors.org

EVENT SUPPORT PERSONNEL

PRE-REGISTRATION: JIM & KAREN KEYS, HEIDI HAHLÉN

SHOW & SALE: DALE ERICKSON
507-645-6771 • showandsale@redwingcollectors.org

DISPLAY ROOM: TYLER GREEN
display@redwingcollectors.org

KIDSVIEW & YOUNG COLLECTORS: LINDA WIPPERLING
651-764-2183 • kidsview@redwingcollectors.org

FROM THE EDITOR

It's hard to believe that another Convention has come and gone! As usual, many attendees reported that making the annual pilgrimage to Red Wing was highlighted by visiting with old and new friends alike and adding a few new pieces to their collections. If you weren't able to attend in July, this issue of the *RWCS Newsletter* contains more than 200 photos from the biggest Red Wing event of the year.

Although I shoot photos at most of the Convention-related activities, I'd like to recognize two contributors who have assisted me in recent years. The first is Trails West Chapter Member Larry Salisbury, who always carries his camera during Convention Week and mails me a CD loaded with photos to pick and choose from. The other is RWCS Member Jonathon Callicoat, who has covered KidsView and Young Collectors for several Conventions. Considering how long Jonathon has helped me out, I wasn't surprised when he told me this year would be his last. Thanks to both of you for the help! With some luck, I'll find a capable replacement for Jonathon next summer.

RWCS Executive Director Stacy Wegner and I do our best to recognize the many members who give their time and talents to RWCS activities and initiatives. But try as we might, there are many who don't get the accolades they deserve. Therefore, I was pleased when RWCS Member Mike Back e-mailed to suggest doing a "Member Spotlight" article in future issues of the *RWCS Newsletter*. Look for that series to begin in the October issue. If you'd like to suggest someone to shine the spotlight on, you know how to reach me.

Finally, as much as I hate to end this note on sad news, several RWCS members have passed away in the past year. While we can no longer dedicate the space to include obituaries for all members in the newsletter, Stacy created a new "Member Memorials" page in the members-only section of the RWCS website a few months ago. If you know of a member who has died, please continue to notify Stacy and she'll see that their obituary is added to the page. When space allows, I'll continue to include notes in the newsletter about members who were quite active in the RWCS. Sadly, we lost three well-known members in recent months, and they are featured on page 15 of this issue.



Rick Natynski, Editor

IN THIS ISSUE

3	News Briefs, About the Cover	8-9	Convention Photos
4	Convention Review	10	2016 Display Room Results
5	Convention Jaw Droppers	11	Convention Auction Highlights
6	President's Welcome	12-13	"Wine-ing" for Red Wing Report & Photos
7	KidsView: Sweet 2016	16	Crock Fest Photos

Primary membership in the Red Wing Collectors Society is \$35 annually; associate membership is \$15. There must be at least one primary member per household in order to have an associate membership. Members can pay for up to two years when renewing their membership. Contact the RWCS Business Office for additional details.

The Red Wing Collectors Society, Inc. Newsletter is published bi-monthly by the Red Wing Collectors Society, Inc. 240 Harrison St. • Unit #3 • Red Wing, MN 55066
Phone: 651-388-4004 • Fax: 651-388-4042 • www.redwingcollectors.org

Postmaster: Send address change to: Red Wing Collectors Society, Inc. Newsletter
PO Box 50 • Red Wing, MN 55066. • USPS 015-791; ISSN 1096-1259.

Copyright © 2016 by the Red Wing Collectors Society, Inc. All rights reserved.
The Red Wing Collectors Society, Inc. does not guarantee the accuracy of articles submitted by individual members.



Licensed to . Copyright Red Wing Collectors Society

NEWS BRIEFS

2016 CONVENTION BUTTON

If you want to order a 2016 RWCS Convention button, don't wait long! They sold like hotcakes in July and only 20 are left. Designed and sold by the Badger Chapter, this is the Society's first Convention button made from leather. It was made in Red Wing by the historic S.B. Foot Tanning Co., which is the main leather supplier for the Red Wing Shoe Co. Pictured at right, Badger Chapter members Gary & Bonnie Tefft did a fantastic job designing the buttons, coordinating production and attaching the pin backs.

Buttons cost \$5 each. Total including shipping and handling is \$9 for one button or \$15 for two. To order, please mail checks made payable to "RWCS Badger Chapter" to Heidi Hahlen, 4909 Foxfire Trail, Middleton, WI 53562.



OUTGOING BOARD MEMBERS RECOGNIZED

At the RWCS Annual Business Meeting during Convention, the three outgoing members of the RWCS Board of Directors were thanked for their years of service and two new Board members were welcomed. Larry Birks (2 years as President), John Sagat (6 years as Secretary) and Glenn Beall (8 years as Education Manager) did not seek reelection in this year's balloting. Angela Shefveland was welcomed as the club's new Secretary and Michelle Weisen as the new Education Manager.

Paul Wichert vacated his position as Vice President after being elected RWCS President. After Convention, the board appointed RWCS Member Mike Stenstrom as Interim RWCS Vice President. Congratulations to Paul and our three new Board members, and thanks again to Larry, John and Glenn for everything they've done for the Society!

CONVENTION COMMITTEE FORMED by RWCS Member Todd Avery

Last year, a committee was formed to look at the annual Convention held in Red Wing, MN. As a committee, we sent an e-mail notification survey to all members that had a current e-mail address in our database. Our goal with this survey was to gauge the satisfaction of those who attend Convention. The response rate was better than anticipated, which was much appreciated. A big "thank you" to all of you who completed this survey.

The company that delivered the survey on our behalf compiled the findings in a straightforward report. I presented the report to the RWCS Board of Directors during Convention. From that meeting, a new committee was proposed to address possible changes to future Convention formats and I was tasked with chairing this committee.

This is an open committee for anyone wishing to join. The only requirement is that you are a current member of the RWCS in good standing. One of the primary ways we communicate is through a Facebook page that is tied-in with the RWCS Facebook page. This is not a part of the RWCS Facebook Chapter, but it is easily accessible for those of you who are online. I've decided to go this route, as it allows open communication and quick access to documents and group discussions. If you would like to join, but are unsure how, please call the RWCS Business Office. Stacy is happy to help you. If you would like to look at the results of the survey, they will soon be available online or you can e-mail me at toddnoraavery@gmail.com.

NEWS BRIEFS *continued on page 15*

WWW.REDWINGCOLLECTORS.ORG

Licensed to . Copyright Red Wing Collectors Society



ABOUT THE COVER

A piece from the July Convention is often featured on the cover of the *August RWCS Newsletter*, but this year the honor goes to this exceptional 10 gallon crock double-stamped with a 6-inch wing and birch leaves. Auctioned on Aug. 6 by the Sweeney Auction Service of Waukon, Iowa, only a few base chips on the back keep it from being mint. After fervent bidding from bidders onsite and over the phone, it sold to RWCS Commemorative Manager Bob Morawski for \$5,800. Bob says it's one of only two different pieces he's aware of that has a wing and birch leaves on it. The other is the 4 gallon crock with a set of blue birch leaves stamped above a 4-inch wing pictured on page 215 of the *Red Wing Encyclopedia*.

A small percentage of pieces were stamped with two sets of numbers, decorations and ovals, and usually the stamps were positioned on opposite sides of the crock. A popular theory is that these were intended for display in storefront windows so the decoration could be viewed from both inside and outside the store. Collectors tend to pay more for pieces where the stamps are located closer to one another, however, because being able to see both stamps at the same time makes a unique and attractive display.

CONVENTION REVIEW

Thank you to everyone who attended #RWCSCON40 – the Ruby Red Wing Convention. It was great to see so many new and familiar faces in July. The focus of this year's Convention was that Red Wing collectors have gathered in Red Wing, MN for the past 40 years. As I was chatting with Al Harteneck, Red Wing High School's head custodian, we realized it was the 20th Convention held there. My, how time has flown!

Great job to all the chapters on their "40" displays. I can't wait to see them again next year. For those chapters that didn't bring one, there is still time to make one for the 2017 Convention. Call the office if you need ideas or further details; I am happy to help you get started on your 40.



STACY WEGNER
Executive Director

Richard Spiller returned as our potter, giving demonstrations and hands-on classes at Red Wing High School. Members had the opportunity to buy a stoneware "40" or a large wing for their collection. You can still order one for \$25 shipped; contact me for details.

On behalf of Glenn Beall, our immediate past Education Manager, I'd like to thank each of the following people who presented educational seminars at Convention: Henry Hecker, Terry Moe, Larry Roschen, Laura Beall, Catherine Beall, Ray Reiss, Rick Natynski, Dustin Heckman, Scott Kolby, the RWCS Foundation, Steve Showers, Mark Youngblood, Paul Boudin, Connie Mathison, Larry Peterson, Steve Poeschl, Casey Mathern, Robert Mittelstaedt and Dennis Nygaard. As far as education goes, this was one of our best Conventions ever! Thanks to each of you for sharing your knowledge with fellow collectors.

Crock Fest at the Pottery Museum of Red Wing was well attended on Friday evening. Root beer floats, a nacho bar, the Jug Band and a new exhibit at the museum were great additions to the event. Members enjoyed having a place to connect with their Red Wing friends before heading out on the town. The Facebook Chapter stayed late and had a great time. And yes, attendees were posting event photos with their phones!

Special thanks to Associated Bank, First State Bank Red Wing, Larry's Jugs Antiques, Red Wing Brewery and Treasure Island Resort & Casino. These sponsors, along with many others, supported the Convention through their generous donations. Once again, the annual Crock Hunt was an exciting activity. Repeating sites and new shops alike participated in the hunt this year. I am pleased to announce that RWCS Member Bonnie Guenter of Ramsey, MN was our winner.

We also thank the Badger Chapter for the awesome leather button it created for this year's Convention. What a way to bring together the RWCS and Red Wing Shoes for this milestone event. If you'd like to order a button, see page 3 for details.

Once again there was a tie for Little Brown Jug of Membership! Congratulations to the Wisconsin and Badger chapters for their hard work in recruiting new members. Looking for ways to promote the RWCS in your area? Call me – I can help. The slate is clear and it's time to get started for next year's competition.

The *RWCS Convention Supplement* is online so you can read all the great articles that appeared this year. The Video Lending Library has also been updated online, so you can borrow videos of the education sessions at Convention that were recorded.

In closing, a BIG shout out of thanks to all the volunteers who helped out this year. Your Convention is successful because of all the event volunteers and those who work year-round to make the event happen. Volunteering is a great way to meet members and see more of the Convention. Volunteer next year and get involved! Mark your calendar for July 6-8, 2017 and as they say, "May the 40th be with you!"

Licensed to . Copyright Red Wing Collectors Society

The 40th Annual RWCS Convention has come and gone, and boy, was it a lot of fun! I'd like to thank everyone who helped out in the Commemorative Room this year. As usual, the volunteers did a bang-up job.

I'm pleased to report that I received a lot of positive feedback about this year's

Commemorative, which is a stoneware advertising mini jug. We gave Rowe Pottery another try despite some unfavorable reviews of the stamp on last year's Commemorative, and this time the Cambridge, Wis. pottery came through for us. The main difference with this year's pieces is that the stamps were applied by fired-on decals, which resulted in lettering that was much more crisp. The jugs were slip cast in a three-piece mold and handles were applied by hand.

Pictured below, Version A made up 90 percent of the total production and advertises the RWCS 40th Annual Convention. Versions B and C have vintage ads for conventions in Red Wing. Version B is the 1927 Redman jug and C is the 1939 Minnesota Postal Convention jug.

The RWCS also produced an accessory piece. For the first time it could be purchased along with mail order Commemoratives. In the past, members had to attend Convention to purchase an accessory. The accessory is a 2 1/4" brass die-cut challenge coin.

The silent auctions for the 2 gallon crocks that were decorated with RWCS chapter logos and live auctions for other pieces were a success at Convention events. If you didn't get one, be sure to attend the RWCS MidWinter in Des Moines next February, where we will auction off a few more!

Mail orders were shipped by Aug. 19, so most of you should have received it by now. I have some special things in store with 2017 being the Society's 40th Anniversary. Look for some details early next year!



BOB MORAWSKI
Commemorative Manager



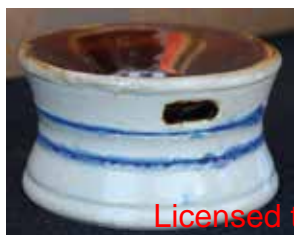
CONVENTION JAW DROPPERS



At right: Although unsigned, the owner of this striking stoneware vase attributes it to Red Wing Potter Charles "Lou" McGrew.



These scarce "toy" spittoons fit in the palm of your hand.



Above, the only 5-inch sponge panel bowl known to exist with advertising made a rare appearance in the Pottery Place parking lot sales. Below, a water dish with advertising for chinchilla rabbit breeders from Groton, S.D.



Above: A pair of hard-to-find Red Wing sewer pipe salesman samples. At right: A vase bottom-signed "Saxon Red Wing, Minn."



Above: The green glaze and half shape make this Minnesota Twins Red Wing ashtray a very special piece. The thumbnail image below shows the standard version for comparison.



Above: This 50 gallon crock is unique due to its Albany slip interior.



Bottom-signed "R.W. UNION S.W. C.O.", this #130 12-inch Indian pot has unusual green tinting. Below: An impressive "Lunch Hour" plate painted and signed by Charles Murphy.



WWW.REDWINGCOLLECTORS.ORG

Licensed to . Copyright Red Wing Collectors Society

PRESIDENT'S WELCOME

As your new President, I want to thank you for the opportunity to lead the RWCS Board of Directors. The RWCS faces a number of challenges and I believe we have a Board that will meet these challenges head on. We are determined to keep the RWCS financially healthy while continuing to provide our members with an enjoyable collecting experience. We are focused on improving both our summer Convention and MidWinter gatherings, making changes whenever it makes sense.



PAUL WICHERT
President

We'll continue to use the latest technologies when they suit our needs. One recent change was putting the most current *RWCS Newsletter* online so that all members have access to it at the same time. Another example is the RWCS Facebook Chapter. We looked at a cyber chapter for a couple of years and finally decided to see if Facebook would work for us. More than 1500 people joined our Facebook page, about 500 of whom are true RWCS members. The others are guests, and a number of them have become official members.

The real credit for the success of the Facebook Chapter must be given to the enthusiasm of RWCS members who share their knowledge and passion every day. It is contagious and it has people excited about Red Wing again. And then there's Chris Tincher and 'Yoshi' Hoffman, the President and Secretary/Treasurer of the Facebook Chapter.

These two gentlemen put blood, sweat and tears into that chapter and made it what it is today. They worked with the Board of Directors to ensure that it met the chapter criteria in our bylaws, which weren't written with a cyber chapter in mind. Chris and Yoshi, thank you both. For our members on the Facebook page, don't be fooled by all the pictures of stoneware that Chris posts. He collects all types of Red Wing. I saw him with Pink Spice dinnerware at the Facebook Chapter gathering during Convention.

I'd also like to mention a regular contributor on the Facebook page, Mr. Crock Potterman. While I haven't met Crock yet, he is a close friend of Rick Natynski, our newsletter editor. Rick tells me that Crock is the nicest guy he knows, and that I'll really like him once we finally meet. I can't wait.

Lastly, I'd like to say "thank you" to the Board of Directors for rising to the challenge and their families for allowing them to do so. I'd also like to thank RWCS Executive Director Stacy Wegner for her tireless dedication. This lady wears more hats and multi-tasks better than anyone I know. Most importantly, I'd like to thank the 160+ volunteers who have stepped up to help out – not just at Convention, but also with MidWinter, our youth programs and technology, just to name a few. Thank you volunteers! We just couldn't do it without you.

Licensed to . Copyright Red Wing Collectors Society





KIDSVIEW: SWEET 2016

Story by Linda Wipperling, KidsView & Young Collectors Organizer

Photos by RWCS Member Jonathon Callicoat

Can you believe KidsView has been around for 16 years? Our Sweet Sixteen was a success for the KidsView participants and Young Collectors. We were expecting 40 attendees, but we had 55 show up between KidsView and Young Collectors. It was a great problem to have and we were ready for them!

On Thursday, kids got to stamp their own jug, paint their own plate and get to know each other. The Young Collectors got to make their own pottery, help with the kids programs or set up for the kids' show & sale to be held the following day.

Friday was a full day that included decorating a big "40" with rhinestones and other embellishments. We dug for pottery and learned about shards. We got to use our "Red Wing bucks" to buy items at the show & sale run by the Young Collectors, and everyone got to practice Sgraffito and paint on a piece of pottery. That was just in the morning!

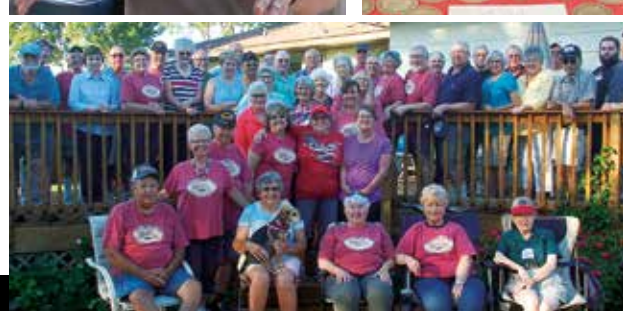
Pizza and other treats were provided for lunch and then more fun for the afternoon. We got to learn about Red Wing candy dishes with the help of Sam Edge and David Hoffman. The kids learned about all types of dishes and got to guess what year they were made. Kids also got to spend time checking out the Display Room and playing outside.

We could not have pulled off another year of great programming without the help of Anna Ostendorf from Red Wing Art Reach, James Clinton from the Goodhue County Historical Society, and RWCS members David Hoffman, Sam Edge, Frank Sheldon, Mike Robinson, Richard Spiller and all the other volunteers who helped out. Thank you!



WWW.REDWINGCOLLECTORS.ORG

Licensed to : Copyright Red Wing Collectors Society



Convention 2016

Red Wing
Collectors Society Inc.
Founded 1977

40TH
year



Congrats to Jeff Savary and his wife Charity (above), who got married on top of Red Wing's Barn Bluff at the end of Convention Week. They're posing here with Brenda Schwab (at right).

WWW.REDWINGCOLLECTORS.ORG

Licensed to . Copyright Red Wing Collectors Society

2016 DISPLAY ROOM RESULTS

This year's display room was one of the best! I have seen a lot of displays over the years, and this year our displayers were a lot of fun to work with. There was competition in every category, especially some great rare items, and it was a lot of fun to hear everyone's stories about their collections. We weren't able to send every displayer home with an award this year, but they all received a lot of support from their fellow members. As always, we thank Stacy Wegner and the RWCS Board of Directors for their support and assistance. A special thank you to Al and the rest of the RWHS Custodial Staff for everything they do. This year was also my last as Display Chair for the RWCS. After 13 years on the committee or as chair, it was time to pass the torch to the next generation. Tyler Green, a young member from South Dakota, has agreed to serve as Display Chair in 2017. His contact information is on page 2. We will be sure to pass on as many tricks of the trade as possible to him in the next few months! It has been a wonderful time of friendships new and old, and I am looking forward to seeing all the displays next year – after they are already set up! -Laura Beall 🇺🇸

ART POTTERY

Best of Show and People's Choice:
"Super Sized" by Glenn Beall.



DINNERWARE

Best of Show and People's Choice:
"Lunch Hour with Marion Oliver-Reeck" by Jacob Becker.

Other Dinnerware Display:
"Miniatures" by Catherine Beall.



STONEWARE

Best of Show: "Advertising with Red Wing" by Martin Voth.



People's Choice: "On the Road: Red Wing to St. Cloud" by Eugene Peterson.



Other Stoneware Displays: "Stoneware, the Best Food Container" and "Watt Ware" by Linda Hemberger, and "Mi 5s, I'll Bowl You Over!" by Charles Hanson.

Clad in purple RWCS shirts, the Beall Clan poses for a photo with fellow Siouxland Redwings Chapter Member Jo Landis. This was the final Convention that Laura Beall (far left) served as Display Room Chair – a role she took over in 2008. She began volunteering in the room when her parents Glenn (pictured) and Julie chaired the Display Room from 2003-2008. This Convention was also the last that Glenn served as RWCS Education Manager – a position he held since being elected in 2008. Daughter Catherine Beall (far right) has also been quite involved at the RWCS Convention. She's volunteered in the Display Room since 2003 and began giving an orientation for first-time Convention attendees in 2009. Hats off to the Bealls for all the time and hard work they've given to the RWCS!

Licensed to . Copyright Red Wing Collectors Society



DENNIS YAECCI RARE ITEM AWARD



Above: The Dennis Yaeggi Rare Item Award went to this exceptional Red Wing Albany Slip Double Cow & Calf figure displayed by Sandy Short. Other rare item displayers were: Glenn Beall, Tim Broetzman, Sue & Wayne Chapman, Jeff Floyd, Rick Natynski, Gary & Bonnie Tefft and a member who requested anonymity.

MEMORABILIA



(Above) People's Choice: "Red Wing in Miniature" by Judy Richardson.

(Below) Best of Show: "Red Wing Spoons" by Tim Broetzman.



CONVENTION AUCTION HIGHLIGHTS

The 2016 RWCS Convention Auction concluded successfully thanks to all the volunteers who assisted in running the auction. If not for Luke Wegner, my co-chair for the auction, and the volunteers who donated their time, we would not have an auction for the membership. So again, thank you!

This year our consignors again submitted some quality pieces totaling 235 lots. We were able to raise just over \$59,000 in total sales. Auction attendees had a wide variety of lots to choose from with price points that appealed to all who wanted to bid. Some highlights are pictured below. Prices-realized catalogs were mailed to those who ordered them in mid-July. Please contact me if yours didn't arrive or you wish to purchase one. They are \$5 mailed.

Lastly, Luke and I are still new to running the Society's auction. If you have any questions, comments, or ideas that can help us improve the auction, please contact me. I'd love to hear from anyone who has suggestions. Please remember this is a member-driven auction. If we do not receive quality auction items from members, then the quality of our auction goes down. I understand people are looking to get the best price for an item they sell, but if all the great pieces are sold privately or via the internet, that takes away from our auction. I challenge you: if you are considering selling a highly sought after piece of Red Wing, give the auction a chance. My goal is to return the Thursday Night Auction to the days when net sales reached the \$100,000 range. Thanks again! -Scott Hardman RWCS Auction Manager

STRAUSS JUG BRINGS \$9500!



Above: Thanks to being stamped with birch leaves, this 5 gallon Strauss Bros. & Co. advertising beehive jug from Chicago hammered down for \$9,500. This is a perfect example why the RWCS Convention Auction is a great place to sell high quality pieces. It's unlikely that the jug would have sold for as much had it been offered for sale privately. Remember, high quality pieces can be sold with reserve for a \$150 fee that is charged only if your item doesn't meet reserve.



20 gallon salt glaze leaf crock (hairlines), \$800.



Despite a rim chip, hairlines and a hole drilled in the bottom, this 2 gal Bause Bros. adv. crock sold for \$700.



Gazing ball stand ink-stamped "Red Wing Art Pottery", \$525.



Along with a Union oval, this 6 gal transition Ice Water was also front-stamped "Red Wing Stoneware Company." It had a faint crow's foot in the bottom and sold for \$2,200.



Selling this 3 gal Robinson Ransbottom Stag Water cooler separate from its lid was smart. The cooler brought \$750, while the lid (chip) sold for \$400.



A Bob White water cooler with lid & stand sold for \$375.



4 gal RW Success Filter top (base chip), \$500.



The tall Red Wing "Jack Frost" pumpkin jar above sold for \$350 (hairline), while the short version brought \$300.



Left: "Tik Tok the Clown" Mursen Clock with original tag on cord, \$350.

Right: 1897 World's Fair "Dime Savings" Bank (dug from dump), \$400.



Red Wing Bulldog, \$600.



#238 trinket box ink-stamped "Red Wing Art Pottery", \$225.



RW skull mug made for Trader Vic's Restaurant in San Francisco, \$300.



Red Wing ice buckets come up on occasion, but this one was bottom-signed "Made in Red Wing". It sold for a solid \$500.



#686 RW Chromoline vase, \$400.



Greyline shaker, \$325, and 2" salesman sample flower pot, \$170.



This pristine 60 gallon Red Wing crock lid hammered down at \$1,050.

Licensed to . Copyright Red Wing Collectors Society

WWW.REDWINGCOLLECTORS.ORG



Above: Wendy Callicoat played Glinda the Good Witch of the South & Ann Tucker played the Wicked Witch of the West during the mortgage burning ceremony that preceded the RWCS Foundation's "Wine-ing for Red Wing" fundraising event. Posing with husband Keith Kaiser, Robin Wipperling played Dorothy.



Other Oz characters were played by Wayne Lambert (Tin Man), Keith Kaiser (Cowardly Lion), Jonathon Callicoat (Scarecrow), Steve Ketcham (Munchkin Mayor) and Steve Brown (Wizard). Larry Peterson played himself.

"WINE-ING" FOR RED WING RAISES NEARLY \$14,000 FOR MUSEUM!

Story by RWCSF Board Member Nancy Lambert & Pottery Museum Manager Robin Wipperling



"RWCS Foundation Day" on Wednesday July 6 began with a very successful fundraising auction conducted by Houghton Auction Service at The Bluffs in Hager City. All the beautiful art pottery, stoneware and collectible dinnerware offered in the auction had been donated, so all the revenue went to help operate the Pottery Museum of Red Wing after expenses.

A reception for members of the Capital 300 Club was held at the Pottery Museum later in the day and more than 100 members celebrated the success of that group. The Capital 300 Club energized the capital campaign and helped in the final push to pay off the contracts for deed.

The Pottery Museum mortgage burning ceremony, followed by the 2016 "Wine-ing" for Red Wing, enjoyed a Wizard of Oz theme this year under the direction of Wendy Callicoat who served as chairperson of the "Wine-ing" event for the 5th straight year. The Wicked Witch of the West (Ann Tucker) asked those gathered for the event, "Who paid my mortgage?" The Mayor of Munchkin Land (Steve Ketcham) read a proclamation declaring the museum building had been paid in full and Larry Peterson ceremoniously tossed the mortgage into the "Emerald City kiln" to burn. This brought an end to the campaign to pay off the contracts for deed to the delight and applause of the crowd that gathered.

The Wizard of Oz himself (Steve Brown) opened the door to the Emerald City when Dorothy (Robin Wipperling), Glinda the Good Witch (Wendy Callicoat), the Scarecrow (Jonathon Callicoat), the Tin Man (Wayne Lambert) and the Cowardly Lion (Keith Kaiser) knocked on the door to "Oz." The group then led almost 250 guests along the yellow brick road into the museum to enjoy an evening of fun and fundraising.

The planning committee once again partnered with the St. James Hotel and West End Liquor to supply food and beverages for the event. Miss Red Wing contestants elegantly served the food and also presented winning bidders with items that had been generously donated for





the live auction. Auctioneer Richard Houghton encouraged enthusiastic bidding that raised \$10,640. The silent auction raised \$1,085 from items donated by RWCS members and local businesses. Musty Barnhardt Insurance, Larry's Jugs and First Farmers and Merchants Bank were corporate sponsors, providing donations that helped underwrite some of the event costs. After the revenue and expenses for the event were accounted for, the "Wine-ing" for Red Wing committee is proud to report that the event generated more than \$13,745 in proceeds for the Pottery Museum.

Thank you to all volunteers who helped with the event setup, worked during the event and helped with clean up. A big thank you also to all the RWCS members who attended the event and supported your museum.

All of the money raised on RWCS Foundation Day during Convention Week will go toward improving the displays, holding educational events and helping to pay everyday expenses at the Pottery Museum of Red Wing. The RWCF Board would like to express its appreciation for the generous donations that made it possible to pay off the building early. A special thank you goes to the "Wine-ing" for Red Wing committee: Wendy Callicoat, Nancy Lambert, Ann Tucker, Robin Wipperling and Linda Wipperling.

NEW EXHIBIT: MITTELSTAEDTS GENERAL STORE

A ribbon cutting for the grand opening of the new General Store exhibit took place at the museum during Crock Fest on Friday, July 8. We were so pleased and honored to have Robert Mittelstaedt and his family (at right) present for the event. We want to recognize those who made the new exhibit possible: Don Madtson and Larry Peterson for donating portions of the counters and shelving; Gary Tyc and Chris Osterholz for the loan of the stoneware crocks; Jeff Vick for the loan of the items on display and our volunteer crew for its hard work.



WWW.REDWINGCOLLECTORS.ORG

Licensed to Copyright Red Wing Collectors Society

AD RATES

Classified ads are 20¢ per word for members and 30¢ per word for non-members; \$4 minimum charge and are accepted on a first-come, first-served basis. In addition to appearing in the newsletter, classifieds and display ads are posted on the RWCS website.

Ads are divided into the following sections: Red Wing For Sale, Red Wing Wanted, Other Pottery For Sale, Other Pottery Wanted, Events, Auctions, Clubs & Publications and Websites, Announcements and Services. You will not be charged for these words, but please indicate which section your ad should be placed in. If ad is to run in more than one issue, please indicate at time of placement. (Note: the small number at the end of an ad tells when the ad expires, e.g., 8/16. Ads without dates are one-time ads.) Please type or print clearly and proofread before submission.

DISPLAY ADS

Display Ad Size	Ad Rate
Full page	\$425
1/2 page (horizontal or vertical)	225
1/4 page	125
1/8 page	85

Display ads purchased by non-members cost an additional 15%.

DISPLAY AD DIMENSIONS

Full Page	8 x 10.5
1/2 page (horizontal or vertical)	8 x 5.25
1/4 page	4 x 5.25
1/8 page	4 x 2.125

Display ads are accepted on a first-come, first-served basis. The publisher reserves the right to refuse ads for any reason.

Ads must be supplied electronically as an EPS or PDF file for PC. If you are unsure about acceptability, inquire with the editor. There is an additional 10 percent fee for design and makeup if needed (\$10 minimum).

DEADLINES

Issue	Ads	Editorial	Mail Date
February	Jan. 10	Jan. 1	Feb. 15
April	March 10	March 1	April 15
June	May 10	May 1	June 15
August	July 25	July 15	Aug. 31
October	Sept. 10	Sept. 1	Oct. 15
December	Nov. 10	Nov. 1	Dec. 15

EDITOR ADDRESS

Make checks payable to RWCS and mail with ads:

Rick Natynski, RWCS
PO Box 198
Pewaukee, WI 53072

Can also submit ads by e-mail. Send to:

newsletter@redwingcollectors.org and
send checks separately. Or, call Rick at
414-416-WING (9464).

CLASSIFIEDS

RED WING FOR SALE



FOR SALE: 5 Red Wing water coolers – never used. Made by the new Red Wing Stoneware Company in the 1990s or 2000s 5 gallon (only 3 made), \$1,275; 3 gallon (20 made), \$625; 2 gallon Collectors' Club (1986 5th 1990), \$475; 2 gallon Hormel Barrel, \$425; 2 gallon Hormel barrel with red wing, \$475 (fewer than 50 made). Free shipping in the contiguous United States. Prices firm. Questions? Please call Tom at 507-298-1495.

FOR SALE: 2 gallon wing only jug, \$900. Blue banded lid, \$100. Will not ship jug. Call 515-669-8566.

FOR SALE: Red Wing 2 gal adv jug. From farm auction in Waverly, KS. "Music Hall Bath House, Excelsior Springs, MO." One of three known to exist. \$2975. We deliver. Contact 816-510-2248 or mjm2fl@comcast.net.



FOR SALE: RW Tampico water cooler, lid & stand in perfect condition, \$400 plus SHI. Contact efreeman1987@outlook.com.

FOR SALE: Bob White 12 piece dinnerware set. Includes 12 Plates 6 1/2", Soup/Cereal Bowls 6 1/2", Fruit/Dessert (Sauce Bowls) 5 3/4, Plates 10 1/2", Cups & Saucers. Also 1, 13" Platter, 2 Sugar & Creamer Sets, 1 Gravy Boat – Stick Handle w/lid, 1 Bird Hors D'Oeuvers Holder, 1 Relish Dish, 3 sections, 1 Vegetable bowl, 1 Butter Dish 1/4 lb., 1 Teapot w/warmer stand, 1 20" Platter w/stand, 1 stand for gravy boat. Only sold as complete set. Located in NH. \$2500. Contact BJRedfern@aol.com or (603)-426-1993.

FOR SALE: 6" RW sponge panel bowl with "Meierhoff Hardware, Highland Park" adv from Illinois. \$250. Contact Rick at 414-416-9464 or newsletter@redwingcollectors.org

RED WING WANTED

WANTED: L. Borserini, Atchison, Kansas advertising jug – contact julibug@cox.net, or 479-283-9889

WANTED: Looking for a Willow Wind pattern Spoon Rest – the last one I need to complete my collection of Red Wing spoon rests! Please call Margaret at 651-388-9729.

WANTED: Oomph plates, all sizes. Large brown mugs with the Oomph rim and a set of baking dishes. Please contact Marty, mepeterson1955@gmail.com with description and cost. Shipping is to 04021. Thanks in advance, Marty from Maine. 8/16

WANTED: 6" and 8" green/brown Red Wing Oomph Bakeware mixing bowls. Call and/or text photos to Patricia at 503-360-8333.

WANTED: MOOSE JAW, Saskatchewan, Canada advertising. Will consider any condition. Please contact Greg at 307-543-2010 or ghouda@wyoming.com 12/16

WANTED: Will pay strong price for Red Wing bean pot with Westby, Wis. advertising. Contact Rich at 608-617-7424 or repatlargeeast@redwingcollectors.org

WANTED: Maroon Daschund planter & 12 gallon advertising crocks. Contact Matt at mhuepfel@svtel.net or 715-778-5684.

WANTED: 9-inch Red Wing blue & white sponge panel bowl. Will consider any condition. Contact 414-731-0218 or redwingr@gmail.com

WANTED: NORTH DAKOTA! Looking for jugs, crocks, butter crocks and churns with advertising. Will pay top dollar for the right pieces. Contact 701-270-0242 or beehive@polarcomm.com

WANTED: Mini and salesman sample flower pots in any colors. Contact 402-598-1315 or cobe142@cox.net

WANTED: Red Wing #687 & M3006 large blue/green Chromoline vases in mint condition. Contact Rick at 414-416-9464 or newsletter@redwingcollectors.org

EVENTS

Elkhorn Flea Market, Walworth County Fairgrounds in Elkhorn, WI. Sunday, Sept. 25. More than 500 quality dealers! For information, visit www.nlpromotionsllc.com

Walnut Antique Fall Festival – Walnut, Iowa. Sept. 17-18, 2016. Quality indoor and outdoor dealers. Limited space available. Furniture, pottery, toys, advertising and more! For information, call Tim Lockard at 641-862-3239 or like us on Facebook/ walnutantiquefallfestival.

NEWS BRIEFS CONTINUED

The goals of the new committee are to help deliver a dynamic and rewarding experience for all those who attend Convention by openly and honestly addressing any issues that need to be explored. I hope that we will be able to supply the RWCS Board and Executive Director with helpful and timely input. I look forward to this exciting challenge!

NEW DISPLAY ROOM CHAIR

The RWCS is happy to announce that RWCS Member Tyler Green has volunteered to serve as the new Display Room Chair! Tyler has been a fixture at Convention in recent years, participating in the KidsView and Young Collectors programs. He's looking forward to being the point person for all things display-related at next year's Convention. If you're planning on setting up a display or a bringing a rare item next July, e-mail him at display@redwingcollectors.org to introduce yourself.



Green

UPCOMING CHAPTER MEETINGS

The Lewis & Clark Chapter will hold its fall meeting at the home of Corey & JoAnn Flick at 1 p.m. CST on Saturday, Oct. 1. All interested individuals are invited. For more information and to RSVP, please e-mail the Flicks at cojoflick62@gmail.com or Shiela Schumacher at rjsj@mchsi.com.

The fall Wisconsin Chapter meeting will begin with a tour of the Aquaponics Farm in North Freedom, Wis. at noon on Sunday, Oct. 16. Lunch and the business meeting will follow at 2 p.m. at the Coach House Inn in Rock Springs, Wis. Contact Pete & Barb Pavloski at pbpav@hotmail.com for more information.

MEMBER PASSINGS

Longtime RWCS Member **Cliff Ekdahl** passed away in Red Wing on May 19 at the age of 74. He and wife Margaret were married in 1963 and moved to Red Wing four years later, where he served as Red Wing High School's band director for 35 years.



Ekdahl

Margaret says she started collecting Red Wing dinnerware in 1991, but eventually "Cliff just kind of took over." Before they knew it, they had two garages full of dinnerware and another garage filled with art pottery. The couple opened those garages during Convention every summer to sell. "We would sell as many as 10,000 pieces of dinnerware in the summer, and it would barely make a dent," Margaret recalls.

Cliff was a good friend of RWCS Member Ray Reiss, author of the two *Red Wing Art Pottery* books, and a large percentage of the dinnerware pieces pictured in the books belonged to the Ekdahls. Cliff also did an educational video on Red Wing dinnerware titled "Plate by Plate", which the couple sold throughout the 1990s and 2000s.

Cliff is survived by his wife, Margaret, their son and daughter, a grandson and granddaughter and many other family and friends.

RWCS Hall of Fame Member **Arthur "Con" Short** died on July 18, just a few days short of his 79th birthday.

Con and wife Sandy were married in 1960; they raised their family and ranched in North Dakota for 45 years before moving to Marshalltown, Iowa, to run Taylor's Maid-Rite restaurant.

Con and Sandy loved collecting North Dakota and Red Wing pottery. Con was the second president of the North Dakota Pottery Collectors Society (NDPCS) and was a 38-year member of the RWCS. He and son, Dave, gave many seminars about Red Wing – which Con considered to be the hottest ticket at the annual Convention – and their entertaining banter and enthusiasm for salt glaze would fill the room. He and Sandy always sat in the front row at the auctions, hands held high. As one of the best-known couples in collecting, they acquired a second family of NDPCS and Red Wing members whose friendships are truly priceless.

Con never met a stranger and would talk to anyone, whether they wanted to chat or not. He had a gift for making everyone around him feel special. He is survived by his wife of 56 years, Sandy, their three children (Don, Dave and Sarah), five grandchildren and a large circle of extended family and friends.



Short

Longtime RWCS Member **Jolene McKoon** died at the age of 66 in Moline, Illinois, on Aug. 12.

Jolene married Arthur "Jody" McKoon in 1970, worked for Trinity Medical Center and its predecessor organizations for 35 years and was a member of the International Association of Administrative Professionals.

Collecting pottery and stoneware was one of Jolene's passions. She was a devoted RWCS member and served as the club's Vice President from 2006 to 2009. She gave numerous educational programs on art pottery history, performing as Belle Kogan, the first prominent female industrial designer in the United States. In addition to being a member of the RWCS Iowa, Trails West and Badger chapters, she was also active in the Iowa Art Pottery Association and American Art Pottery Association.

Another of Jolene's hobbies was clowning. She played "Josie Posie" at various charity events and was a member of the Quad Cities Distinguished Clown Corps.

Jolene is survived by a son, two granddaughters (who were the light of her life) and many other friends and family. Somewhere, she is making someone smile.



McKoon

WANTED

LOYAL, WIS.
ADVERTISING BEAN POT



ANY CONDITION CONSIDERED!

Please contact David at
otonoh@yahoo.com or
715-355-8521.



This year, Crock Fest was held at the Pottery Museum of Red Wing, where attendees enjoyed root beer floats and hors d'oeuvres before the new "General Store" exhibit was officially unveiled. Then the Facebook Chapter held its chapter social, enjoying pizza and beverages provided by Larry's Jugs. It was a fun night with lots of entertainment!



COMING IN THE OCTOBER ISSUE...

ADVERTISING
BEAN POTS
GET SOME LOVE



Licensed to . Copyright Red Wing Collectors Society

WWW.REDWINGCOLLECTORS.ORG