



VOL. 39 NO. 2

NEWSLETTER

APRIL 2014



MIDWINTER
COVERAGE

Pages 4, 6 & 8-9

RWCS
FOUNDATION
WELCOMES
NEW MUSEUM
MANAGER

Page 5

THE SPITTOON
FROM THE WALL

Page 7

INTRODUCTION
TO DINNERWARE:
THE HOTEL OR
RESTAURANT LINE

Pages 12-13

RWCS CONTACTS

RWCS BUSINESS OFFICE

PO Box 50
240 Harrison St. • Unit #3
Red Wing, MN 55066-0050
651-388-4004 or 800-977-7927 • Fax: 651-388-4042
EXECUTIVE DIRECTOR: STACY WEGNER
EXECUTIVEDIRECTOR@REDWINGCOLLECTORS.ORG
MEMBERSHIP@REDWINGCOLLECTORS.ORG
Web site: WWW.REDWINGCOLLECTORS.ORG

BOARD OF DIRECTORS

PRESIDENT: DAN DEPASQUALE
2717 Driftwood Dr. • Niagara Falls, NY 14304-4584
716-216-4194 • PRESIDENT@REDWINGCOLLECTORS.ORG

VICE PRESIDENT: ANN TUCKER
1121 Somonauk • Sycamore, IL 60178
815-751-5056 • VICEPRESIDENT@REDWINGCOLLECTORS.ORG

SECRETARY: JOHN SAGAT
7241 Emerson Ave. So. • Richfield, MN 55423-3067
612-861-0066 • SECRETARY@REDWINGCOLLECTORS.ORG

TREASURER: MARK COLLINS
4724 N 112th Circle • Omaha, NE 68164-2119
605-351-1700 • TREASURER@REDWINGCOLLECTORS.ORG

HISTORIAN: STEVE BROWN
248 Cannon View Dr. • Red Wing, MN 55066
920-629-0970 • HISTORIAN@REDWINGCOLLECTORS.ORG

REPRESENTATIVE AT LARGE: RUSSA ROBINSON
1970 Bowman Rd. • Stockton, CA 95206
209-463-5179 • REPATLARGWEST@REDWINGCOLLECTORS.ORG

REPRESENTATIVE AT LARGE: JERRY ERDMANN
W15416 Fair-Morr Rd. • Tigerton, WI 54486
715-535-2094 • REPATLARGEEAST@REDWINGCOLLECTORS.ORG

AUCTION MANAGER: BRUCE SELFRIDGE
PO Box 1266 • Healdsburg, CA 95448
707-431-7753 • AUCTION@REDWINGCOLLECTORS.ORG

COMMEMORATIVE MANAGER: BOB MORAWSKI
2130 S. Ridgeway Dr. • New Berlin, WI 53146
262-853-8269 • COMMEMORATIVE@REDWINGCOLLECTORS.ORG

EDUCATION MANAGER: GLENN BEALL
215 W. 7th St. • Logan, IA 51546-1221
712-644-2256 • EDUCATION@REDWINGCOLLECTORS.ORG

JULY CONVENTION SUPPORT PERSONNEL:
Pre-registration – JIM & KAREN KEYS
HEIDI HAHLEN

Show & Sale – DALE ERICKSON, 507-645-6771
SHOWANDSALE@REDWINGCOLLECTORS.ORG

Display Room – LAURA BEALL, 605-464-5941
DISPLAY@REDWINGCOLLECTORS.ORG

IN THIS ISSUE.....



PAGE 3	NEWS BRIEFS, ABOUT THE COVER
PAGE 4	MIDWINTER REVIEW, CLUB NEWS & CONVENTION UPDATES
PAGE 5	NEWS FROM YOUR NEW RED WING POTTERY MUSEUM
PAGE 6	2014 MIDWINTER JAW DROPPERS
PAGE 7	THE SPITTOON FROM THE WALL
PAGE 8	MIDWINTER PHOTOS
PAGE 10	A TREASURE RESTORED
PAGE 11	2013 RWCS FINANCIAL REVIEW
PAGE 12	INTRO TO DINNERWARE: THE HOTEL OR RESTAURANT LINE
PAGE 14	CLASSIFIED ADS, RWCS OBITUARIES
PAGE 16	A SNAKE ENCOUNTER: THE THINGS WE DO FOR RED WING

MEMBERSHIP

A primary membership in the Red Wing Collectors Society is \$35 annually and an associate membership is \$15.

There must be at least one primary member per household in order to have associate membership. Members can pay for more than one year when renewing their membership. Contact the RWCS Business Office for additional details.

NEWSLETTER EDITOR

RWCS MEMBER RICK NATYNSKI
PO Box 198
PEWAUKEE, WI 53072

NEWSLETTER@REDWINGCOLLECTORS.ORG • 414-416-WING (9464)

The Red Wing Collectors Society, Inc. Newsletter is published bi-monthly by the Red Wing Collectors Society, Inc. • 240 Harrison St. • Unit #3 • Red Wing, MN 55066.
Phone: 651-388-4004 Fax: 651-388-4042



WWW.REDWINGCOLLECTORS.ORG



Postmaster: Send address change to: Red Wing Collectors Society, Inc. Newsletter
PO Box 50 • Red Wing, MN 55066. USPS 015-791; ISSN 1096-1259.



Copyright © 2014 by the Red Wing Collectors Society, Inc. All rights reserved. The Red Wing Collectors Society, Inc. does not guarantee the accuracy of articles submitted by individual members.

NEWS BRIEFS

2014 RWCS BOARD OF DIRECTORS ELECTIONS

Enclosed with this issue of your *RWCS Newsletter* is a ballot for the RWCS Board of Directors elections. Balloting will be by mail in accordance with RWCS by-law Article V, Nominating Committee and Voting Procedure. Ballots must be received in the RWCS Business Office or PO Box no later than June 30, 2014. Ballots are mailed to all members in good standing. A member must be in good standing as of the June 30 closing date to have his/her ballot count. When returning ballots, they must be folded and sealed shut. Photocopies will not be accepted. To request ballots for associate members, contact the RWCS Office at MEMBERSHIP@REDWINGCOLLECTORS.ORG or 800-977-7927. With a couple of the positions up for election being contested, we strongly encourage everyone to vote! -RWCS Vice President Ann Tucker

RWCS ENEWSLETTER NOW LIVE ONLINE!

As of this issue, RWCS members now have password-protected online access to the current issue of the *RWCS Newsletter*! While past issues of the newsletter have been online for many years, this is the first time that members can log on and see the newest issue on the day the printed copy gets mailed. The e-newsletter is an exact electronic image of the printed newsletter in a PDF (Adobe) format. Enjoy!

THE WINE-ING FOR RED WING FUNDRAISER

Attention all RWCS members! Please be sure to put the evening of July 9, 2014 on your Convention "to-do list". The RWCS Foundation will host the annual Wine-ing for Red Wing event with the Grand Opening of the new Red Wing Pottery Museum! There will be lots of exciting changes to this year's event. Watch the June *RWCS Newsletter* for more details. If you're interested in donating an item to be auctioned off during our event, or if you would like to volunteer to help before or during the event, please contact Wendy Callicoat at CROCKS701@AOL.COM.

PREVIEWING 2014 YOUNG COLLECTORS

Attention all Young Collectors!! Time is getting closer to making plans for your annual summer vacation to Red Wing. Last year the Young Collectors voted on the activities they wanted to do for the 2014 Convention. It was a unanimous vote that another hike up Barn Bluff would be first on the list. The Young Collectors really enjoyed seeing Red Wing from high up over the town. We will hike up the bluff on Thursday morning and have a picnic lunch. It is our mission with the Young Collectors to not only educate participants on the pottery made in Red Wing, but also the beauty and history of the town itself. I will be looking for volunteers to join us on our trip. We had a great turnout of volunteers last year; in fact, there was close to a 1:1 chaperone to Young Collector ratio.

On Friday morning, RWCS Members Frank Sheldon and Mike Robinson will once again instruct students on the potter's wheel. These kids have great skills on the wheel, so we encourage everyone to visit the RWHS Art Room on Friday to see their creations.

Don't forget that each Young Collector can qualify for the RWCS Foundation Scholarship opportunity by participating in Young Collectors activities as well as Convention activities. I want to encourage participants to consider volunteering for all areas of Convention. There are many opportunities, including helping at the Auction, giving a seminar, setting up a display or helping during the RWCS Foundation Fundraiser from 5 to 9 p.m. on July 9. (Young Collectors who would like to help at this event can send me an e-mail.)

There will be more details in the June *RWCS Newsletter*. If you have any questions about this summer's activities, or you are willing to volunteer, contact RWCS Young Collectors Chair Wendy Callicoat at CROCKS701@AOL.COM.



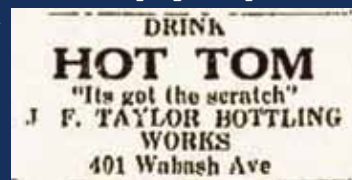
ABOUT THE COVER

We all know that 2 gallon Red Wing water coolers are pretty desirable, so it comes as no surprise that 2 gallon advertising coolers are even more coveted. This impressive cooler has a nifty ad for Hot-Tom – a drink that must not have taken off like its manufacturers had hoped judging from the lack of historical information that exists on it. A web search yielded two hits – the advertisement below and this excerpt from the Jan./Feb.1921 issue of *The American Bottler* – a trade paper for the bottling industry:

A REAL COLD WEATHER DRINK

After years of careful study and constant experiments, the Scales-Wilson Company of Greenville, S.C. announce that they have perfected a real cold weather drink – Hot Tom – and are having a busy time keeping ahead of the orders that keep coming in. One of its many features is that it can be put out in either still form, in kegs or large bottles, or carbonated in small bottles. One of the largest brewing establishments in the country is making experiments to utilize kegs and twelve-ounce bottles and advise others to do likewise for they are expecting big things from Hot Tom. The Scales-Wilson Company suggest that interested parties order a trial gallon so that territory may be held for the purchaser and it is stipulated that if the purchaser is not fully satisfied, the keg may be returned at the company's expense.

Collectors and history buffs are always curious where an advertising piece came from when it lacks a city name. While the



manufacturer of Hot-Tom was based in Greenville, S.C., that doesn't necessarily mean that they commissioned Red Wing to make this piece. Since the paragraph from *The American Bottler* basically encourages "interested parties" to become regional distributors of the drink, it's more likely that one of those dealers commissioned the cooler. Maybe it was J.F. Taylor Bottling Works of Decatur, Ill., which placed the above advertisement in the April 2, 1920 *Decatur Daily Review*.

I'm personally wondering how they came up with the name of this drink. Perhaps it was created by a man named Tom who constantly ran a fever of 101.4 degrees. Or, maybe this Tom character thought he was an attractive guy and wanted to broadcast this to everyone else. I doubt we'll ever learn why this drink was named "Hot-Tom", but one thing I do know is that we have 48 fellow RWCS members named Tom and I'm fairly certain that all of them would like to own a cooler like this.

By the way, I'm in the market for a "Hot-Rick" advertising cooler. Call me if you find one. 🐾

-RWCS Newsletter Editor Rick Natynski 3



**STACY
WEGNER**
Executive Director

About 250 members gathered in Des Moines in search of Red Wing at the "Hunter's Paradise" MidWinter GetTogether in Des Moines.

Friday night Hunter's Shack reception attendees got to roast marshmallows, bid on a number of great pieces and experience a skit like no other. Check out Glenn Beall's column below to learn more about the great seminars we had on Saturday morning. Saturday afternoon offered lots of great buys at the Show & Sale and the Houghton Auction, which was a fundraiser for the RWCS Foundation.

A big thank you to the Sunshine State Red Wingers for sharing their white Sasquatch as the event emcee and contributing their 2013 chapter commemorative with membership for one year as door prizes. If you were a winner and have not already turned in your membership form to the Sunshine State Red Wingers, please do so right away.

Many thanks to all the members who volunteered for registration and Show & Sale, the educational speakers and everyone else who made MidWinter successful. Finally, thank you again to the Iowa Chapter for providing the coffee and rolls before everyone hit the trail home.

For those who missed this year, it's time to mark your calendar for 2015. Next year's MidWinter GetTogether will take place February 6-8 in Oconomowoc, Wis. As voted by the membership in attendance, the theme will be "The Big Game". So, plan to wear your favorite team's apparel for any sport.

By the way, the RWCS is holding a logo design contest for MidWinter. Submit your ideas to the RWCS office by May 15. Members attending Convention will have the opportunity to vote and the winning submission will be unveiled in the October issue of the *RWCS Newsletter*. The winning designer will get a free registration to MidWinter 2015! By participating in this contest, you will give up all rights to your design and it will become the property of the RWCS.

I'd again like to thank RWCS Members Deb Gullickson, Heidi Hahlen and Cindy Becker for volunteering in the office to help with data entry, mailings and other projects. There are also a number of projects that members can do from the comfort of their own home, including helping with the RWCS website and contributing content for social media. And as always, contact the office if you're planning to attend upcoming flea markets or auctions, etc. We have membership brochures, Convention flyers and other materials that you can pass out to help the Society recruit new members.

Finally, please contact the RWCS office if you need a ballot for the associate member(s) in your household for the RWCS Board of Directors elections. No phone voting is allowed. You have until June 30 to return your ballot to the office. See the News Briefs on the previous page for more information.



**GLENN
BEALL**
Education Manager

I'd like to take this opportunity to thank all the folks who spoke at

MidWinter. Once again, we had a great lineup. If you did not attend, you really missed some good information. But fortunately you will have the chance to see some of what you missed if you're going to Convention in July. We have a very informative talk by Mark Wiseman on the history of the Eldora, Iowa Potteries. Mark is never at a lack for sharing exciting information. Terry Moe and Larry Roschen will also give their talk again – they have given out so much

information on dinnerware that they should compile it into a book. We will also have a speaker sharing information on how to insure your collections. The RWCS Foundation will give a talk on all the exciting things they are doing to capture and share the history of the Potteries. Nancy Lambert will present on the making of a new book for collectors. We're also sure to have speakers sharing new finds from the Red Wing Pottery Dump.

We are always looking for more speakers, so if you know of a topic you would like to see covered, let me know. I'm looking for a speaker who can discuss the Red Wing markings and the timeline they represent. Of course, let me know if you'd personally like to speak. If you think you cannot present a session because you feel like you don't know everything, talk to one

of the current speakers. I am sure they will assure you that they have never been treated poorly by people attending the seminars. It is easier than you think. Remember, your presentation can be on any American pottery. I personally like to learn about the history from any pottery.

You can also check out any taped session that Stacy has on file at the RWCS office. We record as many as we can afford; some are available on DVD and some on VHS. All keynote speakers have been recorded. Talk to Stacy and get one for your next chapter meeting. There is no charge to borrow them.

Again, thanks a bunch to all our speakers. You truly represent the Society well. Be sure to thank these people when you attend their presentations for all the time they put into each talk and for sharing their knowledge.

DESTINATION RED WING: RWCS CONVENTION JULY 10-12, 2014

Unlike last year at this time, spring has yet to arrive in Red Wing! Despite the chill, the phones are hot and the mailbox is full of members registering for Convention and ordering their RWCS Commemorative. As you read this issue, Convention is only about 2½ months away! Here are some updates on this year's big event:

Thank you to Red Wing Pottery, Red Wing Stoneware and Larry's Jugs Antiques for sponsoring Convention again this year!

The Annual Convention Crock Hunt will again start on the Friday before Convention and go through the Show & Sale on July 12. If you live in the Red Wing area and would like to help with this event, please contact the office.

The Hands-on Pottery Experience will again be held at Red Wing High School on the Thursday and Friday of Convention Week. New this year are more time slots, new pieces for your personal creation and an extended schedule! For just \$40 you can make your own piece of pottery with potter Richard Spiller. Your creation will be mailed to you after Convention. Visit the RWCS website to learn more.

KidsView: We're in the early stages of planning a program for this year, but we need volunteers and someone to manage the program onsite. If interested in helping, please contact the office.

Volunteer Opportunities: Make a Convention memory and meet more collectors! All Convention departments are welcoming members to volunteer. There is something for every member, from set up to clean up and everything in between. Call the office if you'd like to help out this year!

Convention Street Banners: We are accepting orders for new street banners through May 15 to ensure they are hung for the Annual Convention. The price of a street banner is determined by the quantity we order, so please get your order in ASAP.

The Red Wing Guest Pass will once again be provided to Convention attendees by the Red Wing Area Chamber. They will be available for pickup at Registration beginning the Wednesday of Convention Week.

Don't forget that Auction Submission Forms and Sellers Table Requests are due May 15! 🍷

NEWS FROM YOUR NEW RED WING POTTERY MUSEUM

Story by Nancy Lambert, RWCS Foundation Fundraising Chairperson



The Midwinter GetTogether in Des Moines in February was a great “FRIENDraising” weekend for the Red Wing Collectors Society Foundation. The Foundation Board wore shirts with the new Red Wing Pottery Museum logo when presenting the keynote address. Everyone present who has contributed in any way to the museum was recognized and handed a button (pictured above and on page 2) to show that they helped make the museum a reality. Buttons will be available during Convention to new donors and those who have contributed, but weren’t in attendance in Des Moines.

The Foundation Auction during MidWinter helped raise \$10,500 for the museum fund. All auction items had been donated specifically for the purpose of raising funds. If you have pottery or quality antiques you can donate for the Wednesday auction during Convention in Red Wing, please call our new Red Wing Pottery Museum Manager, Robin Whipperling, at 651-327-2220. Speaking of Robin, we’re really excited to welcome her onboard. Read more about her on this page!

Members got involved at MidWinter by signing up to donate money for specific items needed for the museum. The “brick wall” pictured above was on display with items written on each brick, and individuals or chapters could put their name on the brick to sponsor the item. As a result, more than \$3,200 was donated for folding tables, silverware, security cameras, a phone system, a coffee maker, a 3D-DVD player and a Smart TV. All of these items will be used in the museum. We will no longer need to rent tables for events like Wine-ing for Red Wing! There are still items you can sponsor, so please call Robin if you’d like to help out.

Volunteers are hard at work getting the Red Wing Pottery Museum ready to go for the Grand Opening this summer. The Schleich Red Wing Pottery Museum will be moved from Lincoln, Neb. to its permanent home in Red Wing this spring, starting with a “Pack-up Party” on April 4 and 5. The Trails West Chapter will send a delegation and other volunteers will join them in Lincoln. We’ve also heard from several RWCS members who are sending packaging materials since they’re unable to make the trip. Still others will drive down to Lincoln to pick up the loads of packed pottery and transport it to Red Wing. If you are able to help in Lincoln or Red Wing on weekends in April, please contact Larry Peterson at 612-719-6113.



Colleen Riley, owner of Eureka Pots, was named the 2013 RWCS Foundation Award winner. She took her first pottery class in 1990 at the Northern Clay Center in Minneapolis. She makes her “soda fired stoneware” by hand in Farmington, Minn.



More than \$3,200 has been donated for a wide variety of items needed for the new Red Wing Pottery Museum. Donations are still being sought for several items, including a security system for the museum and a computer for the research library. Donation levels start as low as \$75, so please call 651-327-2220 if you’d like to make a donation.

Finally, please continue to watch your e-mail as we are sending monthly updates to chapter presidents to send out to members so all of you can stay in the loop regarding museum activities. Also, you should have received the RWCS Foundation Fundraising Mailing by now. Please consider what you can donate and make note of information about becoming a “Founding” member of Friends of the Red Wing Pottery Museum. Thank you for supporting your Red Wing Pottery Museum! 🍷

MEET ROBIN WIPPERLING!

We’re proud to introduce Robin Whipperling, our new Red Wing Pottery Museum Manager! She began working part-time on April 1 and will be a great help as we move forward with events at the museum and the new Friends of the Red Wing Pottery Museum program.

Robin comes to us with experience in fundraising, recruiting and overseeing volunteers, organizing and setting up programs, and networking in Red Wing and surrounding areas. She has been the Program Developer for the Red Wing Area Seniors for the past 11 years. Her background also includes a nursing degree and seven years as an office manager.

Robin has also been an active volunteer in the community for the past 30 years. As a lifetime resident of Red Wing, she has extensive knowledge of its history. She is excited about working for and bringing life to the Red Wing Pottery Museum.

Robin and her husband, Keith Kaiser, have seven adult children between them. They enjoy spending time with their grandchildren, and Robin loves to explore and photograph nature on weekends. 🍷



Robin Whipperling and husband Keith Kaiser attended their first RWCS MidWinter GetTogether in February.

2014 MIDWINTER JAW DROPPERS



Canadian RWCS Member Kelly Wilson found this odd 2 gallon Red Wing crock in Winnipeg last summer; it has a reversed Idaho advertising stamp on the inside. Larry Peterson later purchased it and brought it to MidWinter.



This special 2 gallon salt glaze Albuquerque advertising crock with a target on the back had been on display in the Red Wing Pottery Museum for many years until Larry Peterson brought it to MidWinter. It didn't last more than a couple of hours before some lucky RWCS members added it to their collection.



A 2 gallon crock lends scale to this large Red Wing salt glaze Russian milk pitcher.

It's been awhile since such a large crock was brought to MidWinter. RWCS Member Jim Hackett had this 50 gallon in his room on the 5th floor. Thank goodness for elevators!



Longtime RWCS Dump Digger Steve Showers displayed this incredible salt glaze cow during the Show & Sale. Although it's missing a few appendages, Steve unearthed the well-crafted piece from an old privy in Red Wing.



Side and front views of an ornate sewer tile pitcher.



THE SPITTOON FROM THE WALL

Story by RWCS Newsletter Editor Rick Natynski



A view of the back of Jessica & Rick Edwards' home after the fallen tree had been removed, but prior to demolition and repair.

Just mention the possibility of a severe storm, and Red Wing collectors shutter. As collectors of somewhat fragile items, storms are thought of as things that can take away pieces from our collections – not add to them. So imagine the surprise of RWCS Members Jessica & Rick Edwards when they discovered a rare Minnesota Stoneware spittoon after strong winds pushed an old elm tree onto their home in 2011.

A quick, but powerful storm blew through the Edwards' Cannon Falls, Minn. property in May of that year. Neighbors believe wind speeds reached 50 to 60 mph. Fortunately Jessica and Rick had left for work before the front came through, so no one was injured. The same couldn't be said for the 150-year-old house, however.

"The tree fell on the old summer kitchen section of our house, through the wall and the roof," Jessica recalls. "It did some damage to the 2nd story roof, as well. Fortunately insurance covered all of the repairs and bringing that part of the house up to code, and we pitched in extra for a poured concrete foundation under that section of the home."

There was a slight delay before repair work could start because a tornado hit North Minneapolis a day later, increasing the workload for insurance adjusters. Plus, determining what needed to be done to bring the home up to code took some time. Fortunately the home was still inhabitable during that time, and work finally began in July. The day the construction crew pulled out walls and beams and excavators cleared way for the new foundation, Jessica and Rick walked outside to survey the progress.

"Rick noticed a pile of 'stuff' on the ground a few feet away from the demolition area and he suggested we see what it was," Jessica says. "As we walked over, I saw a piece of pottery, which I picked up and turned over. That's when I saw the words 'Minnesota Stoneware Co. Red Wing' on the bottom. I tried to keep from squealing like a little girl. I tucked it under my arm and hurried to bring it inside to wash off the dirt and grime. It was in excellent condition!"

As indicated by her excitement, Jessica was familiar with Red Wing stoneware. Her parents, Joseph & Karen Midgarden, are longtime RWCS members and Jessica herself has been an RWCS member since her mom got her a membership in 2005. Jessica says her parents would take her and her three siblings to summer flea markets, where they would wander around and see what they could buy with their pockets of change.

"As we got older, my parents and my grandmother Clara Newman,

who also did a lot of antique collecting, would give us various pieces," Jessica says. "I don't recall my first piece of Red Wing pottery, but I seem to be the only child out of four who likes collecting."

"I'm kind of random in my collecting," she continues. "I don't have specific styles or pieces that I 'need' to have. I get what I like if I can live with the price – or at least, if my husband can live with the price. Poor Rick is an innocent bystander. He likes antique tools, but he isn't really into pottery...unless he could actually use it."

Jessica wasn't quite sure what she had found on that exciting day back in July of 2011, so she uploaded a picture of the piece to Facebook and called her mom, who believed it was a spittoon. She advised Jessica to show it to Larry Peterson, who was welcoming RWCS Convention attendees into his new shop – Larry's Jugs Antiques. The piece got a lot of attention from those in attendance. Larry told her it was an early lady's-size Albany slip spittoon and estimated its value at \$1,200.

Some people might have sold the spittoon right then and there, but not Jessica. Due to the way it was found and its connection to her home's past, she took it home, where it is now proudly displayed in barrister bookcase in her living room.

Built in the 1860s, the Edwards' home is on the National Registry of Historic Places. Jessica and Rick have a copy of a drawing of their house from an 1870 atlas, which was given to them by a former owner. Because the summer kitchen is shown in the drawing, she believes the spittoon was used by the home's first inhabitants.

"The story I have in my mind is that as it is a lady's spittoon found in the summer kitchen wall, the wife of the house kept it hidden in the summer kitchen where she had it handy when she was busy canning," Jessica says. "It got left and forgotten over the years and subsequent owners, when they walled off sections one by one, took no notice."

Jessica and Rick had cleaned out the rooms in a previous DIY demo. They found ink wells, bottles, shoes, a bed headboard and footboard, part of a Quaker Corn Flakes box, a couple of China plates, a pottery piggy bank, offering envelopes from the church and part of a wood-fired stove. But the spittoon was the only thing of real interest that was found when construction workers removed the walls.

"The fact that the spittoon was undamaged, even through the demo, is astounding," she concludes. "I am so happy that the guys doing the demo not only found it, but opted to set it aside undamaged and didn't toss it into the dumpster." 🍷



MID





WINTER 2014

A Red Wing Hunter's Paradise



Even little Adalynn Evans wore camouflage for the Hunter's Shack reception in Des Moines. Born July 23 2013, she made her RWCS debut at MidWinter with her sister Presli and proud parents RWCS Members Blake Evans & Ashli Kemp (at right).

WWW.REDWINGCOLLECTORS.ORG

A Treasure Restored

Story by RWCS Newsletter Editor Rick Natynski

When RWCS Member Tracy Owens made his annual trip to the MidWinter GetTogether in Des Moines in 2012, he never thought he'd meet a person who would say "yes" to restoring his stenciled and front-stamped "Red Wing Stoneware Company" 30 gallon salt glaze butterfly crock. On the flip side, RWCS Member Kevin Williams didn't know that he'd be taking on his biggest project to date – a job that would take him two years to complete.

The story begins several years ago when Tracy's dad, Wayne Owens, bought the shards for \$60 from collector Kevin Pell, who had them in his garden. Eventually Wayne gave the pieces to Tracy. Although more than half of the crock was missing, Tracy super-glued the pieces together and displayed it in an outbuilding that houses most of his collection.

"Having it displayed with my other pieces was always a good conversation starter when people were looking at my collection," Tracy says. "I always thought it would be cool to find someone who could restore it, but I wasn't expecting it to happen. It was kind of a fluke meeting Kevin, and then everything fell into place."

Tracy walked into Kevin's room at MidWinter back in 2012 when he was displaying some of the pieces he had restored. One of those items was a "fantasy piece" – a 5 gallon triple-stamped, double bung salt glaze water cooler with a cobalt daisy decoration on one side and a single P on the other. Kevin says he made it out of the pieces from three different salt glaze coolers that had been dug from the Red Wing Pottery Dump.

"That cooler took way too many hours to do, but it had become my obsession," Kevin explains. "I wanted to showcase what could be done. After seeing the cooler, Tracy showed me some pictures of his 30 gallon butterfly and ended up delivering

the crock to me later that month."

A self-taught restorer, Kevin started "playing around" with stoneware restoration in 2000 because he often found broken crocks and jugs while digging for bottles. He glued the pieces together and eventually began experimenting with full restorations. He started bringing the finished pieces to bottle club events and soon he was restoring pieces for friends.

"Everything that I do for folks is in my 'spare' time," Kevin says. "I hope to retire to something like this someday, but for now I do it on nights and weekends. I work out of my home, which means the basement or maybe even the kitchen table. At any one time I have 10 to 20 projects in varying stages of work, so my average turnaround time is 6 to 12 months."

Of course, Tracy's crock wasn't an average job. First he had to cut the pieces apart and grind away the glue because chemicals had no effect on breaking down the bond. Then he had to decide what to use for the missing back half of the crock. He obviously wanted to use stoneware rather than another material, but knew it would be difficult to find enough of a 30 gallon salt glaze crock.

"I finally discovered that the early 30 gallon hand-thrown zinc glaze crocks were near the same diameter as the salt glaze versions, so I sacrificed a 30 gallon birchleaf crock that I had rescued years before for our flower garden," Kevin explains. "Then I made a template of the missing portion and transcribed it onto the zinc crock. Using a grinder, I cut out the part I needed and 'married' the old with the new. I meshed the two crocks together using a two-part epoxy, sanded and then repeated the process several times."

While Kevin tries to keep pieces as original as possible, this piece had to be a total repaint. Most of the cobalt decoration was intact, but the



RWCS Member Tracy Owens poses with his restored 30 gallon stenciled and front-stamped butterfly crock.

missing area had to be hand-painted.

Due to the complex nature of the job and his mother becoming ill and passing away during the process, it took Kevin two years to complete Tracy's crock. He estimates he spent more than 300 hours on it, which means his "hourly rate" was very small. But this job was all about taking on the challenge and developing new processes, Kevin says. He delivered the crock to Tracy during this year's MidWinter event in Des Moines.

"I told Kevin up front that I was in no hurry to get it back, so I wasn't upset that it took two years," Tracy explains. "It was an incredibly huge job, so I honestly wasn't expecting him to get it done as quickly as he did. I'm really pleased with the way it turned out."

Getting the crock back has been bittersweet for Tracy, however. His dad passed away last year, so Wayne didn't get the chance to see it finished.

"Dad was pretty excited that it was getting restored," Tracy adds. "It's really nice to have something like this to remember him by."

Now Tracy proudly displays the crock inside his home in the same room as a 30 gallon salt glaze double leaf crock. Someday he'll pass it down to his teenage sons Trevor and Zach.

"I have a feeling Zach might end up with it though," Tracy laughs. "The other day he told Trevor, 'When Mom and Dad are dead, you can have the money. I want the crocks.'"



Step by Step Butterfly Crock Restoration Photos

1 & 2: The "crock" as Kevin received it from Tracy. Although a lot of it was missing, all the important parts were there.

3: Shards dismantled.

4: 30 gallon birchleaf marked for cutting.

5: Coming together.

6 & 7: Views of the two halves put together.

8: Kevin poses with the finished product. It's a crock again!

You can reach Kevin Williams at 641-473-3045 or KBWILLIAMS@WILDBLUE.NET.

2013 RWCS FINANCIAL REVIEW

OPERATING INCOME

MEMBERSHIPS	\$76,769.90
NEWSLETTER ADS	3,575.85
DONATIONS	132.00
CARRYOVER	10,000.00
HANDLING FEES	79.50
INTEREST	3,344.20

TOTAL REVENUES

\$380,160.49

TOTAL EXPENDITURES

\$356,537.35

NET REVENUE

\$23,623.14

NOTE: BALANCE OF PREPAID DUES AS OF DECEMBER 31, 2013 IS \$23,770.00.

OPERATING EXPENSES

ACCOUNTING	\$3,270.00
ADVERTISING	1,840.68
BANK CHARGES - CC	6,661.13
CAPITAL EXPENDITURES	1,504.37
DONATIONS	7,239.00
DUES/SUBSCRIPTIONS	275.00
INSURANCE	2,916.45
FULL BOARD	158.05
LEGAL & TRADEMARKS	315.00
FEDERAL TRADE MARK RENEWAL	1,025.00
TECHNOLOGY PROJECTS	216.00
ONLINE MARKETING	750.00
ONLINE MEMBERSHIP	7,200.00
ONLINE MEMBERSHIP SUPPORT	475.00
WEBSITE	1,597.50
NEWSLETTER	76,397.16
NEWSLETTER TRAVEL	1,000.00

OFFICE EXPENSES

FACILITIES	\$7,220.00
INSURANCE - EMPLOYEE	7,946.62
INTERNET / E-MAIL	414.95
MEMBERSHIP COSTS	1,276.76
OFFICE SUPPLIES & MISC.	1,802.90
PETTY CASH	293.00
TELEPHONE	1,564.53
PAYROLL TAXES	3,776.06
SALARY - EXEC. DIRECTOR	48,910.35

AUCTION INCOME

AUCTION	\$51,575.00
CATALOG	929.00

COMMEMORATIVE INCOME

COMMEMORATIVES	\$56,675.00
COMMEMORATIVES (MAILED)	51,255.00
COMMEMORATIVE AUCTION	4,700.00
LATE FEES	445.00
LOTTERY SALES	11,715.00
MAILING FEES	11,532.00
LIVE & SILENT AUCTIONS	23,225.00
35TH ANIV. COMBO BOOK	506.50
COMMEMORATIVE NOVELTIES	320.00
ACCESSORY PIECE	11,280.00

EVENT INCOME

KIDS VIEW	\$2,909.00
BANQUET	1,770.00
FACILITIES - MIDWINTER	500.04
GIFT BASKETS	1,848.00
CROCKFEST SPONSORS	650.00
SPONSORS PICNIC	1,190.00
YOUNG COLLECTORS	1,940.00
PRE-REGISTRATION	35,145.00
SELLER'S TABLES	6,475.00
SPONSORSHIPS	2,025.00
HANDS-ON POTTERY CLASS	385.00
STONEWARE BADGES - MIDWINTER	966.00
WALK-IN REGISTRATION	4,330.00
TOTE BAG SALES	195.00

AUCTION EXPENSES

AUCTIONEER	\$1,121.30
PAID TO OWNERS	45,872.50

COMMEMORATIVE EXPENSES

COMMEMORATIVES	\$40,181.97
LODGING	412.88
MEALS	177.35
MILEAGE/TRAVEL	4,543.50
POSTAGE & SHIPPING	9,302.90
PRINTING - COMMEMORATIVE	1,044.69

EVENT EXPENSES

KIDSVIEW	\$1,390.51
SOCIAL EVENT - BANQUET	1,543.27
FACILITY - MIDWINTER	500.04
CROCK HUNT	50.00
SOCIAL EVENT - CROCKFEST	965.00
YOUNG COLLECTORS	522.06
PRE REGISTRATION	315.00
PRINTING - CONVENTION	464.87
PUBLICITY/MARKETING	512.00
SECURITY	3,103.83
SHOW & SALE	900.00
SIGNAGE	273.30
SOCIAL EVENT - MIDWINTER	8,035.49
SUPPLEMENT	3,528.26
HANDS-ON POTTERY CLASS	304.00
WALK IN REGISTRATION	760.00
SUPPLIES (OFFICE SUPPLIES INC.)	3,312.59
VOLUNTEER RECOGNITION	1,052.40
SALARY - STIPENDS	6,250.00
FACILITY - HIGH SCHOOL RENTAL	11,250.00
CONVENTION BANNERS	106.82
DISPLAY	838.88
EQUIPMENT RENTAL	2,690.23
EDUCATION PROGRAMS	5,888.75
STONEWARE BADGES - MIDWINTER	850.50

Every Spring, your Board furnishes you with a financial summary such as the one shown on this page. A financial status report is also presented at our Annual Business Meeting in July. The financial information shown here is current through Dec. 31, 2013. You can also receive a complete listing of 2013 expenses by contacting the RWCS Business Office.

-Mark Collins, RWCS Treasurer

RED WING COLLECTORS SOCIETY – 2014 BUDGET RED WING, MINNESOTA

REVENUES	2013 BUDGET	2013 ACTUAL	2014 BUDGET
GENERAL & ADMINISTRATIVE	\$73,200.00	\$85,674.95	\$78,415.00
CONVENTION	50,310.00	50,413.00	50,910.00
COMMEMORATIVE	158,850.00	166,953.50	168,450.00
AUCTION	70,700.00	57,204.00	70,000.00
MIDWINTER	11,831.30	9,915.04	9,791.30
2011 CARRYOVER	10,000.00	10,000.00	0.00
TOTAL REVENUES	\$374,891.30	\$380,160.49	\$377,566.30
EXPENDITURES	2013 BUDGET	2013 ACTUAL	2014 BUDGET
GENERAL & ADMINISTRATIVE	\$183,533.27	\$186,111.05	\$185,009.75
CONVENTION	42,627.26	35,721.39	41,674.51
COMMEMORATIVE	70,250.00	73,802.23	73,700.00
AUCTION	64,150.00	49,660.27	64,150.00
MIDWINTER	11,111.30	11,242.41	11,511.30
CARRYOVERS	0.00	0.00	0.00
TOTAL EXPENDITURES	\$371,671.83	\$356,537.35	\$376,045.56
NET REVENUES	\$3,219.47	\$23,623.14	\$1,520.74

WWW.REDWINGCOLLECTORS.ORG

RWCS MIDWINTER CAMOUFLAGE BULLDOGS FOR SALE!



The RWCS had Camouflage Bulldogs made to commemorate the 2014 MidWinter GetTogether in Des Moines. Smaller than the 2013 RWCS Commemorative, these measure about 3¾" tall and 5" long. They are marked "RWCS" and "MidWinter 2014". Only 20 are still available at \$30 each. Shipping is \$7. Contact the RWCS office to order yours before they're gone!



© Copyright 2014 Terry Moe and Larry Roschen
Photos courtesy of the authors and
WWW.REDWINGDINNERWARE.COM

Red Wing Dinnerware & the Hotel or Restaurant Line

The information presented here has been gleaned from vintage Red Wing brochures, catalogs, price lists and internal documents as well as trade journals and magazines. In this discussion, a "pattern" is a dinnerware set in a particular shape with a unique handpainted design or color scheme. A "line" is a group of patterns that share the same shapes but have different handpainted designs or colors. Some of the introduction and exit dates presented have not been verified because of gaps in available documentation. When uncertain, an estimated date is provided. The end point of a pattern can be difficult to ascertain. In the 1940s and 1950s a discontinued pattern no longer appeared on price lists; in the 1960s patterns that were no longer in production remained on price lists as "limited stock" with only a few pieces listed. Here a pattern is considered to be discontinued when a full range of items was no longer available and orders were limited to remaining stock.

Each pattern has been assigned an Availability rating and a Collector Interest rating as described below. Availability represents an average for the pattern in question, however the scarcity of certain pieces within the pattern may differ. Collector Interest refers to the pattern in general, but there may be specific pieces in any pattern that are of greater interest to specialty collectors (teapots, pitchers, salt & peppers, etc). Please keep in mind these ratings are the authors' observations; your experience may vary.

Availability

- 1 – Rare
- 2 – Very scarce
- 3 – Hard to find
- 4 – Average
- 5 – Readily available

Collector Interest

- 1 – Highly sought, demand exceeds supply
- 2 – Primarily of interest to specialty collectors
- 3 – Above average
- 4 – Average
- 5 – Below average

HOTEL or RESTAURANT Line

Hotel or Restaurant China, Empire Shape

Availability: 4 Interest: 5

Years: 1960s

While many collectors refer to this as Hotel & Restaurant, the name used on an undated brochure is "Hotel or Restaurant China". This line was produced exclusively for the restaurant trade. It does not appear on standard dealer price lists because it was not available to the public. And because it did not appear on price lists, it is difficult to put a start or end date on the production of this line. Some sources state that production began in 1964. Most likely production continued until the close of the Potteries in 1967. Additional information about these patterns can be found in the August 2010 *RWCS Newsletter*.

Hotel or Restaurant pieces in the Empire Shape had a vertical ribbed design on the exterior or around the rim. Pieces were heavy and sturdy, designed to withstand rough and repeated use. Because the line was made to serve customers in a restaurant, the list of items made for Hotel or Restaurant differed considerably from standard household dinnerware patterns. Items available included plates (5 sizes), platters (3 sizes), coffee cups in 2 styles (bell or tall), individual teapot, pot pie bowl, bouillon cup with no handle, tea cup with no handle, individual ashtray, creamer, open sugar, sauceboat, soup bowl (2 sizes), cereal/salad bowl, sauce/fruit bowl, oval bakers (3 sizes) and a lobster-shaped lobster dish.

All pieces were available off the shelf in either white or beige fleck. For an additional charge, a trim line could be added; available colors included blue, green, red, yellow and possibly others. Besides the two standard colors, the lobster dish was also available in orange. Some references include this lobster dish with the CeramaStone line, probably because of the orange color. But that is incorrect; it belonged to Hotel or Restaurant.



White Empire Shape dinner plate (above) and bowl (below).



White Empire Shape creamer and beige fleck teapot (above) and orange lobster dish (below).



Above: Empire Shape plates with various trim colors. Below: Empire Shape sauceboat and sugar dish in beige fleck.



Above: Empire Shape cup & saucer, dinner plate, bowl and bread plate in beige fleck with green trim.



Left: Empire Shape "bell style" cup & saucer in beige fleck and green trim. Right: Empire Shape "tall style" cup & saucer in beige fleck.





Hotel or Restaurant China, Regal Shape

Availability: 1 Interest: 4

Years: 1960s

A newly discovered Hotel or Restaurant brochure lists two different shapes. This brochure most likely was published shortly before the closing of the Potteries. One side of the brochure featured the familiar ribbed Hotel or Restaurant dinnerware, which was described as the Empire Shape. The other side showed the New Regal Shape. Like Empire, Regal dinnerware feels heavy and was promoted as chip resistant. Regal had a smooth surface and was available in white or beige fleck glaze. The brochure does not mention custom orders or colored trim. The brochure listed only a

few Regal pieces: Plates in three sizes, Bowls in two sizes, Bouillon Cup and Cup & Saucer. This explains several previously undocumented pieces that have been found in recent years. Regal was likely produced for only a brief period before the Potteries closed in 1967. Examples that are marked have an upright green wing with a block "Red Wing" across the middle.



Regal Shape bowl and cup & saucer.

HOTEL or RESTAURANT Custom Orders

Red Wing also accepted custom orders. These orders featured Hotel or Restaurant China (Empire Shape) decorated with a unique design made exclusively for that customer. Four such designs are known to exist.



Sveden House Availability: 3 Interest: 4 Years: 1960s

Red Wing books refer to this pattern as "Sweden House", but the correct name is "Sveden House". A more detailed article about the history of Sveden House will be published in an upcoming issue. Sveden House was a chain of smorgasbord (buffet) restaurants with a Scandinavian theme. Sveden House plates had a Scandinavian-looking house above an abstract floral design. The artwork was done in two shades of blue against a white background, with a blue trim line around the rim. Because Sveden House was a self-serve buffet style restaurant, only a few basic pieces were needed. Dinner plates and matching 6½" plates were custom-ordered, but the blue-trimmed cups and saucers were stock items and thus not specific to Sveden House.



Diamond Jim

Availability: 2 Interest: 1

Years: 1960s

Diamond Jim's was a nightclub located in Mendota Heights, Minn. – a suburb of the Twin Cities just south of the Mississippi River. There may also have been at least one location in California, according to a Red Wing collector who recalls working at a Diamond Jim's there many years ago. The artwork on Diamond Jim plates featured an antique automobile. A different auto appeared on each of the five plate sizes. The auto was dark pink and black against a white background. The entire rim of each plate (not just a trim line) was dark pink. Cups and saucers and possibly other pieces had the same dark pink rims. The antique auto motif has great



Diamond Jim cup & saucer.

appeal to collectors, and the limited scope of production makes Diamond Jim plates difficult to find and highly sought.



Thunderbird Availability: 1 Interest: 2 Years: 1960s

The Thunderbird Motel was located in Bloomington, Minn. near the old Metropolitan Stadium, which is now the site of the Mall of America. A small number of Hotel or Restaurant dinner plates decorated with a totem pole design in black and rust on a white background have been found. These plates had glaze codes on the back rather than the standard Red Wing ink stamp. It is believed these are test or sample plates made for the Thunderbird Motel. Apparently no order was placed and the design didn't go into production.



Sheraton? Interest: 2

Availability: 1 Years: 1960s

Four Hotel or Restaurant dinner plates with an "S" in the design are known to exist. It is speculated these were made as samples for the Sheraton hotel chain. The design featured a large "S" below three flowers and several leaves. The design on each plate was applied as a single color. The artwork on two



of the plates was greenish-gold; the other two plates had pink artwork. The background color for one plate in each color was white, the other was beige fleck. Like the Thunderbird sample plates, these plates had glaze codes on the back. The samples apparently did not result in an order.

Classified ads are 20¢ per word for members and 30¢ per word for non-members; \$4 minimum charge and are accepted on a first-come, first-served basis. In addition to appearing in the newsletter, classifieds and display ads are posted on the RWCS website.

Ads are divided into the following sections: Red Wing For Sale, Red Wing Wanted, Other Pottery For Sale, Other Pottery Wanted, Events, Auctions, Clubs & Publications and Websites, Announcements and Services. You will not be charged for these words, but please indicate which section your ad should be placed in. If ad is to run in more than one issue, please indicate at time of placement. (Note: the small number at the end of an ad tells when the ad expires, e.g., 4/12. Ads without dates are one-time ads.) Please type or print clearly and proofread before submission.

DISPLAY ADS

Display Ad Size	1x	6x
Full page	\$425	385
1/2 page (<i>horizontal or vertical</i>)	225	205
1/4 page	125	115
1/8 page	85	70

Display ads purchased by non-members cost an additional 15%.

Display Ad Dimensions

Full Page	7 1/2 x 10
1/2 page (<i>horizontal or vertical</i>)	7 1/2 x 4 7/8
1/4 page	3 5/8 x 4 7/8
1/8 page	3 5/8 x 2 1/4

Display ads are accepted on a first-come, first-served basis. The publisher reserves the right to refuse ads for any reason.

Ads must be supplied electronically as an EPS or PDF file for PC. If you are unsure about acceptability, inquire with the editor. There is an additional 10 percent fee for design and makeup if needed (\$10 minimum).

DEADLINES

Issue	Ads	Editorial	Mail Date
February	Jan. 10	Jan. 1	Feb. 15
April	March 10	March 1	April 15
June	May 10	May 1	June 15
August	July 25	July 15	Aug. 31
October	Sept. 10	Sept. 1	Oct. 15
December	Nov. 10	Nov. 1	Dec. 15

EDITOR ADDRESS

Make checks payable to RWCS and mail with ads:

Rick Natynski
PO Box 198
Pewaukee, WI 53072

Can also submit ads by e-mail: send to NEWSLETTER@REDWINGCOLLECTORS.ORG and send checks separately. Or, call Rick at 414-416-WING (9464).

RED WING FOR SALE

RW Nokomis Lion Art Pottery #164. Excellent shape. Small glaze skip near the bottom. Asking \$295 or best reasonable offer. Contact RUHLO@TDS.NET.



Illinois Chapter

Commemoratives: 2002, 2004, 2005, 2006, 2007, 2008 – selling as a set. Also have RW Stoneware Co. “Hometown Family Christmas” crocks from 2000, 2001 and 2002. Also selling as a set. Call 815-732-7141. Leave message.

Complete collection: safety valve jars; 3 & 5 gal ball lock jars; 1 qt. Stone Mason jar; two 5 gal hand-turned water coolers (complete – on pg. 66 of *RW Stoneware* book); Red Wing & birchleaf butter churns; Elephant Ear; birchleaf & Red Wing crocks; 5 gal Red Wing jugs; salt glaze crocks; numerous bottom-marked Albany slip Minn. Stoneware pcs.) Call Billie Kramer in Missouri at 573-231-6727.

Vintage Red Wing Gypsy

Trail Fruit Juicer with Cup set. Mint condition, no hairlines, chips or staining. Juicer is marked “Red Wing 256” on the bottom; no mark on cup. Asking \$350 OBO. Contact 630-728-2902 or JCFLINNER@GMAIL.COM



Complete Hamm's Beer Popcorn Set: one large bowl, four small bowls, salt & pepper and pitcher. Perfect condition. Asking \$2,300.00. Photo on request. Must be able to pick up. 414-737-1751 or AJCASINO@YMAIL.COM.

Various Red Wing items including but not limited to 1/2 gallon and 1 gallon Mason fruit jars, 4 gallon and 5 gallon salt glaze beehive jugs, first 3 Commemorative buttons, various deco pottery such as birds and banjos, Bob White salt & pepper, Pepe salt, pepper & sugar set and a small Diamond Jim plate (pink) #385-32. If interested, please call 309-264-4611.

50 gallon Red Wing birchleaf crock, squatty 25 gal birchleaf - both excellent condition. Contact Richard at RNATYNSKI@FRONTIER.COM or 608-617-7424.

RED WING WANTED

Wanted: I want to buy a Red Wing Hamm's Bear Bank in the brown bear version or other versions. Call weekdays at 763-252-0114 or e-mail me at KIRKSCHNITKER@GMAIL.COM 4/14

Wanted: “Early” Normandy, the first version of the Normandy pattern, with maroon and blue bands at the outer edge of the plates. Will buy or trade. Any condition considered. Also wanted: Ivanhoe pieces. Contact John at SECRETARY@REDWINGCOLLECTORS.ORG or 612-861-0066. 6/14

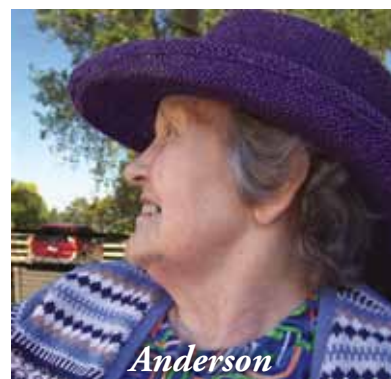
Wanted: Red Wing 2 gallon Salt glaze Ribcage crock, any condition considered. Also interested in 4 or 5 gallon Ribcage crocks with turkey droppings. Contact 570-239-5259 or BMATTMANDI8@AOL.COM. 4/14

Wanted: Mini and salesman sample flower pots. Contact COBE142@COX.NET or 402-331-4749.

Wanted: Round Up teapot, mugs, base for water cooler, serving tray and large casserole dishes. Please contact 320-573-3300 or BARRETTEMS@SYTEKCOM.COM and leave message.

RWCS CHARTER MEMBER PASSING

RWCS Charter Member Joyce Marilyn Anderson died at Seminary Home in Red Wing on February 22, 2014 with her children by her side. She was born in Thief River Falls, MN and her family moved to Red Wing when she was just an infant. She graduated from Red Wing Central High School in 1947. She studied at the Minneapolis School of Art during the 1947-48 school year. She lived with an aunt in Los Angeles, CA and worked there for a brief period before returning to Red Wing. She married Robert “Rivet” Anderson in June of 1953. They had three children. She worked at the Pottery Salesroom from 1971-1981 and then later as a bookkeeper at a local law office. Joyce was a member of the RWCS, United Lutheran Church, Sons of Norway, Red Wing Art Association, Goodhue County Historical Society, Red Wing Country Club, American Legion, YMCA and several different bowling leagues during her lifetime. She loved to travel and was able to see most of the United States as well as making two trips to Norway. What she loved most was spending time with her family and friends.



Wanted: Pelican Ash Receiver #880 in matt Oxblood glaze. Deer Figurine #1364 in Luster Burgundy glaze. Vase #B1433 in burgundy. Magnolia group all in Luster Oxblood (burgundy) glaze: Pitcher #1020; Vases #976/1021, #1027, #1216-8", #1216-10", #1316, #1319, #1321; Bowl #1313, #1323; Planter #1234; Candleholders #1314, #1315, #1324; Plate #1032. Contact: Jay at 952-881-1676 or JAYJURGENSEN@MAC.COM.

Wanted: NORTH DAKOTA! Looking for jugs, crocks, butter crocks and churns with advertising. Will pay top dollar for the right pieces. Contact BEEHIVE@POLARCOMM.COM or 701-270-0242.

Wanted: Red Wing #687 & M3006 vases especially in blue/green Chromoline. Contact Rick at NEWSLETTER@REDWINGCOLLECTORS.ORG or 414-416-9464. Also seeking mint #675 blue/green Chromoline bowl. Will buy damaged Chromoline pieces.

AUCTIONS

3 p.m. Tuesday July 9, 2014 at the Bluffs, Hager City, WI – very large collection of Red Wing art ware – vases, planters, jardinières, bowls, candle holders, ashtrays, Commemoratives, plus much more.

10 a.m. Wednesday July 10, 2014 at the Bluffs, Hager City, WI – crocks, jugs, dinnerware, Red Wing art ware, souvenir items, memorabilia, plus much more.

Catalogs available June 1 at \$5 each. Houghton's Auction, 1967 Launa Ave., Red Wing, MN 55066 WWW.HOUGHTONAUCTIONS.COM

Vote LARRY BIRKS PRESIDENT Red Wing Collectors Society

- Excellent communication skills
- Passionate about Red Wing
- Great organizational skills
- Works hard - gives 150% in everything he does
- Decisive decision maker



**Larry possesses all the needed skills
to govern an organization like RWCS**

Larry served as Trails West Chapter Vice President for 2 years and President for 6 years. He is able to present a variety of ideas and remain neutral while leading a group to make a decision. Larry is able to listen, make good decisions, and knows how to bring the best out of people. His attention to detail is unmatched. He has been instrumental in bringing needed items to the table, like the need for a Chapter Presidents handbook, which he co-authored. He has volunteered in many areas since joining RWCS in the late 80s, gave the keynote speech at Mid Winter 2011, and seminars at Convention in 2010 about Fake Stoneware.

VOTE FOR EXPERIENCE - VOTE FOR LARRY BIRKS

AD PAID FOR BY COMMITTEE TO ELECT BIRKS



Elect Dan Beck Treasurer

"It is not the collection itself that keeps my interest...it is the sharing of this common passion with other people that makes the hobby fun."

Dan has passion for RWCS and the financial background to be a tremendous asset to the operation of the Red Wing Collectors Society!

- CPA since 1979
- Chief Financial Officer \$1.5 billion mutual bank
- Lifelong Minnesota resident
- President of Board of Boy Scout Council SE MN 4 years
- Board member Rochester Area Economic Development Inc.

RE-ELECT MARK COLLINS RWCS TREASURER

Please help me continue to put my financial, legal and non-profit board experience to work for you and for our Society. Thanks again for your continued support!



- 25 years experience as an attorney – specializing in fraud and financial crimes

- RWCS Treasurer since 2005

25 YEARS OF NON-PROFIT BOARD EXPERIENCE

- RWCS Treasurer (9 years)
- Vice President of Operations, Sioux Council Boy Scouts (11 years)
- Board and Executive Committee, Nebraska AIDS Project (8 years)
- Board Member, Volunteers of America/Dakotas (2 years)
- National Association of Medicaid Fraud Control Units President (2 years), Finance Committee (5 years) and Exec. Committee (6 years)

AN ENCOUNTER WITH A SNAKE: THE THINGS WE DO FOR RED WING

Story by an anonymous RWCS Member

Last year I read an article in the *RWCS Newsletter* about a collector who encountered a snake when pulling a 20 gallon butterfly crock out of an old storm cellar. Thanks to a fair amount of boredom and luck, I had a similar experience about three years ago.

One day I found myself with a lot of extra time on my hands, so I decided to do an online search for local auctions. When I found one located at a homestead about 12 miles south of Silver City, Iowa that simply said “crops” in the sale bill, I decided to check it out.

When I got there, it turned out that the only real thing of interest was a bottom-marked 2 gallon salt glaze crock that would be sold about halfway through the auction. I ended up buying it.

While standing there, I learned that the homeowners had passed away about 5 or 6 years ago and the house had been locked up since the auction. Now the two sons, who lived in Kansas City and California, were selling off the property. To this day, I don't know why I stayed around after buying the 2 gallon crock...especially when the auctioneer got down to the box lots of used household items. But I did, and that's when the story got interesting.

A couple dozen other bidders remained when a young guy in his 30s interrupted the auctioneer. I was standing close enough to overhear him say something about how he didn't want to “haul that big, dirty thing back to Kansas City” in his car. Since it was so late in the sale, the auctioneer told him he wouldn't get much for it if he added it now, but the guy (who was obviously one of the sons selling the property) said he didn't care.

I watched as the young man walked away and pulled what appeared to be a 10 gallon crock out from behind a line of bushes that surrounded the house; he promptly set it down at the end of the line of remaining items. I walked over to the crock, which was so dirty that I literally couldn't tell if it was zinc glaze or salt glaze. From what I could tell, it didn't appear to have any cracks or chips. I rubbed a little of the dirt off with my thumb and saw part of a cobalt decoration. That was all I needed to see.

Finally the auctioneer got to the last piece, which was the crock. By this time, only half a dozen other bidders remained. Before starting the bidding, the auctioneer announced, “There's another smaller crock down in the storm cellar. If you buy this one, you can have that one, but you need to get it out. And I'm telling you right now – there's a big snake down there.”

He started the bidding around a few hundred dollars, but no one bit. I was going to wait until the opening bid got down to \$50 or so, but then a lady opened the bidding at \$145. This was a strange



opening bid, and kind of high considering the small number of people left. The auctioneer asked for \$150 and I made the “half” sign with my hand. I was in for \$147.50, and like that, the auction was over and the crock was mine.

Now I never really did like snakes, and I've never really had the notion to want to meet one. But, I wasn't about to leave a perfectly good crock sitting in a storm cellar – even if I had no idea what type of crock it actually was.

After giving the storm cellar a quick look, I returned to my truck to get a flashlight. I saw a person putting some long-handled tools in his vehicle which he had just bought and asked if I could borrow a couple. He obliged and I made my way back to the storm cellar.

I stayed on the bottom step going down to the cellar and shined my flashlight around. I saw the crock and sure enough, a black snake that was about 5 or 6 ft. long. I don't know what kind of snake it was, and I didn't really want to find out. It came at me at first and started hissing, but then it backed off. I reached the crock with the garden hoe I was holding, slowly tipped it over and rolled it over to the stairs. I quickly grabbed it and ascended the stairs back into the daylight.

After returning the man's tools, I put the dirty crocks in the back of the truck. The smaller crock appeared to be about 5 gallons, but it too was so grimy that I couldn't tell what it was. Once I got them home, I sprayed them down with the garden hose. I didn't make much progress in cleaning them off and it was late in the day, so I decided to tackle them the next day.

The following morning I put the crocks in a kiddie pool, mixed some Oxy Clean with a few gallons of water and started scrubbing. The cleaning solution made quick work of the dirt, and before I knew it, I was staring at a 10 gallon butterfly crock and a 5 gallon leaf crock. Both were in excellent condition – the butterfly crock only had a pencil eraser-sized chip under a handle and the leaf crock had a couple small grease streaks. Not a bad haul for only \$147.50! To this day, they're two of my favorite pieces. 🐍

MONMOUTH POTTERY EVENT – JUNE 28

Monmouth, Ill. will hold its annual Pottery on the Square event from 8 a.m. to noon on June 28, 2014 on Monmouth's Public Square. Activities will include a swap meet, appraisal clinic, pottery demo and window display. The Monmouth Area Chamber of Commerce is offering a mini “Two Men in a Crock” for the event. It measures 2¼” tall and 2” in diameter. Only 250 crocks will be made and are on a first-come first-served basis. Place your order now! They are \$25 + shipping. For more info, call the Monmouth Chamber at 309-734-3181, e-mail AMM@MONMOUTHILCHAMBER.COM or visit WWW.MONMOUTHILCHAMBER.COM.



COMING IN THE JUNE ISSUE...

RED
WING'S
MARY
HUHN



WWW.REDWINGCOLLECTORS.ORG