

\$5.95

RED WING COLLECTORS SOCIETY



VOL. 46 #3

NEWSLETTER

MAY 2021

Meet the New RWCS
Support Staff

2

Convention
Updates

4-5

Collector Q & A:
Mitch & Julie Close

6-7

Red Wing's Prismatic
Line Heats Up

8-9

Stork Umbrella Stand
Gets a 2nd Lease on Life

10

Seck's Berman
Auction Highlights

16



Licensed to . Copyright Red Wing Collectors Society

RWCS CONTACTS

BUSINESS OFFICE

PO Box 50 • 240 Harrison St. • Unit #3
Red Wing, MN 55066-0050 • www.redwingcollectors.org
651-388-4004 (call or text)
membership@redwingcollectors.org

NEWSLETTER

EDITOR: RICK NATYNSKI
PO Box 198 • Pewaukee, WI 53072
414-416-WING (9464) • newsletter@redwingcollectors.org

BOARD OF DIRECTORS

PRESIDENT: PAUL WICHERT
W247S7000 Sugar Maple Dr. • Waukesha, WI 53189
414-731-0218 • president@redwingcollectors.org

VICE PRESIDENT: RUSSA ROBINSON
1970 Bowman Rd. • Stockton, CA 95206
209-463-5179 • vicepresident@redwingcollectors.org

SECRETARY: ANGELA SHEFVELAND
905 Hawthorn St. • Red Wing, MN 55066
816-456-2524 • secretary@redwingcollectors.org

TREASURER: DAN BECK
2215 Hill Place SW • Rochester, MN 55902
507-398-6358 • treasurer@redwingcollectors.org

HISTORIAN: NANCY LAMBERT
17 Newcastle Lane • Bella Vista, AR 72714
785-691-7213 • historian@redwingcollectors.org

REPRESENTATIVE AT LARGE: DIANA BAILEY
PO Box 170 • Cedarburg, WI 53012
414-303-2691 • repatlargewest@redwingcollectors.org

REPRESENTATIVE AT LARGE: RICHARD NATYNSKI
N50 W25078 William Dr. • Pewaukee, WI 53072
608-617-7424 • repatlargeeast@redwingcollectors.org

AUCTION MANAGER: DAVE HUISMAN
5420 E. Jahant Rd. • Galt, CA 95632
916-996-3584 • auktion@redwingcollectors.org

COMMEMORATIVE MANAGER: BOB MORAWSKI
2130 S. Ridgeway Dr. • New Berlin, WI 53146
262-853-8269 • commemorative@redwingcollectors.org

EDUCATION MANAGER: VACANT
651-388-4004 • education@redwingcollectors.org

EVENT SUPPORT PERSONNEL

PRE-REGISTRATION: HEIDI HAHLN
608-712-9335 • hshahln@tds.com

SHOW & SALE: GAIL & MERV PECK
402-721-5721 • gpeck1@neb.rr.com

DISPLAY ROOM: **VACANT**
display@redwingcollectors.org

KIDSVIEW & YOUNG COLLECTORS: **VACANT**
kidsview@redwingcollectors.org

MEET THE NEW SUPPORT STAFF

We're pleased to introduce you to the new RWCS support staff! Our new office manager, Miranda Reese, was hired in late March and has been getting her feet wet with membership services and data entry. She'll also assist with organizing the annual Convention and MidWinter events, among other responsibilities.

"I'm really looking forward to meeting everyone at the Convention this summer and putting faces to names," Miranda says. "I've always known Red Wing stoneware and pottery existed, but I've never owned a piece. So, it will be fun to experience this first-hand."

A lifelong resident of Goodhue County, Miranda grew up nearby in Goodhue Township and then lived in Red Wing for about a decade before moving to Lake City in 2018. She resides there with her 8-year-old son, William, and her boyfriend, Brady. An avid outdoors person, she enjoys camping, four-wheeling, boating and snow sports with her family in her free time. She also volunteers at the HOPE Coalition – a local organization that supports victims of domestic violence, child abuse and homelessness. Miranda says this part-time opportunity with the RWCS is an ideal fit for her schedule, as she also works at the Corner Bar & Grille in Goodhue, which she owns and operates with her mother and sister. Built in the 1800s, the historic business has been in her family since 2004.

Our second hire needs no introduction. Luke Wegner has been a familiar face for the past 15 years, often helping out at club events with his wife, former RWCS employee Stacy Wegner, and their daughter, Flora. We hired Luke as an interim employee when Stacy took a new job back in November; he handles our accounting and assists with other office responsibilities, like answering calls and e-mails.

Aside from working events and picking up mail, Miranda and Luke will mostly work from their homes for the foreseeable future and split call-answering duties on weekdays. You can also reach Miranda at miranda.reese@redwingcollectors.org and Luke at membership@redwingcollectors.org.

In closing, a big 'thank you' goes to past RWCS Vice President Mike Stenstrom, who set up the computers, e-mail accounts and phone software for Miranda and Luke. Thanks, Mikel! –RWCS President Paul Wichert 🍷



IN THIS ISSUE

3	News Briefs, About the Cover	11	2020 RWCS Financial Review
4-5	Convention Preview	12	Pottery Museum of Red Wing News
6-7	Collector Q&A: Mitch & Julie Close	13	Highlights from Croatt Auction
8-9	Red Wing's Prismatique Line	14	Classifieds
10	Red Wing's Stork Umbrella Stand	16	Seeck's Berman Auction Highlights

Primary membership in the Red Wing Collectors Society is \$35 annually; associate membership is \$15. There must be at least one primary member per household in order to have an associate membership. Members can pay for up to two years when renewing their membership. Contact the RWCS Business Office for additional details.

The Red Wing Collectors Society, Inc. Newsletter is published five times a year by the Red Wing Collectors Society, Inc. 240 Harrison St. • Unit #3 • Red Wing, MN 55066
Phone: 651-388-4004 • Fax: 651-388-4042 • www.redwingcollectors.org

Postmaster: Send address change to: Red Wing Collectors Society, Inc. Newsletter
PO Box 50 • Red Wing, MN 55066. • USPS 015-791; ISSN 1096-1259.

Copyright © 2021 by the Red Wing Collectors Society, Inc. All rights reserved.
The Red Wing Collectors Society, Inc. does not guarantee the accuracy of articles submitted by individual members.



NEWS BRIEFS

CROCKFEST CONVENTION BANQUET IS A GO!

Join collector friends for a delicious dinner and door prizes at the Mt. Frontenac Golf Course Clubhouse before heading for home from CrockFest. The social hour will begin at 6 p.m. Saturday, July 10 with a cash bar; dinner will be served at 6:30. The cost is \$28.00 per person (includes gratuity). To purchase tickets, mail a check to: RWCS, PO Box 50, Red Wing, MN 55066. Please write "BANQUET" on the memo line. There is NO online purchase available this year. You will not receive a voucher; we will have a guest list at the door. The deadline to sign up is June 21. We can't wait to see you there!

CONVENTION AUCTION TO BE HELD IN-PERSON AND LIVE ONLINE!

We're pleased to announce that the 2021 RWCS CrockFest Convention Auction will take place at the National Guard Armory in Red Wing at 4:30 p.m. Thursday, July 8. The auction preview will be held from 12:30 to 4 p.m. You must be an RWCS member and registered for Convention to preview and attend the auction in person. A 10 percent buyer's premium will be added to items purchased in-house.

Inside seating is currently limited to 250 RWCS members registered for Convention. Additional seating for registered members will be available outside by the overhead door. Please bring lawn chairs in case you're unable to get inside seating. The inside seating capacity might increase as we get closer to the auction date.

For those of you looking to bid online, the catalog will be posted on Proxibid on Thursday, July 1. Online bidding is open to members and non-members alike. Bids can be placed in advance or on the specific piece being auctioned while the auction is in progress. Remember that there will be a slight delay for an online bid to get sent to the auction service, so bid early. Bids received after the hammer falls will be discarded. Items purchased online will be charged a 15 percent buyer's premium. We encourage online bidders to pick up their winnings from the Armory between 8 a.m. and noon on Friday, July 9. Anything not picked up by then can be picked up from the RWCS business office by appointment, or shipped to you by Houghtons Auction Service.

Remember, your fellow RWCS members have consigned the items for this auction, so please be sure to turn out and support them and the club. Bid high and bid often! Special thanks to Todd Houghton and Houghtons Auction Service staff for working through this with us. If you have questions, please contact me at auction@redwingcollectors.org or 916-996-3584. I live on the West Coast, so if you call, please do so between 9 a.m. and 5 p.m. Pacific time (11 a.m. to 7 p.m. Central). -*Dave Huisman, RWCS Auction Manager*

HOFFMAN RESIGNS AS EDUCATION MANAGER

We regretfully announce the resignation of David 'Yoshi' Hoffman from the Education Manager position on the RWCS Board of Directors. We are very appreciative for all the hard work that David has done for us over the years and he will be missed. He has played an integral role on the board and will be difficult to replace. I would personally like to wish David the best in the future.

Please direct all education questions to me until we are able to secure a replacement. If you are interested in the education position, please contact RWCS Vice President Russa Robinson. -*Paul Wichert, RWCS President*

PROPOSED BYLAWS CHANGE: MEMBERSHIP DUES

The RWCS Board of Directors is proposing a change to the RWCS Bylaws Article XII regarding the setting of annual dues. The existing bylaws require the amount of the dues to be voted on at the annual meeting in order to be effective. The Board believes it needs the flexibility of setting dues to meet the ever-changing needs of the RWCS. As annual budgets are set in the fall for the following year, it leaves no leeway in changing membership dues for that budget year based upon the real-time changes in membership and other revenues. To facilitate a timely budget process, we believe this flexibility is needed. In the face of declining membership and other revenue reductions, expense controls have not been able to keep pace with falling membership. While the Board is working to reduce expenses and struggling to find volunteers to fill in the gaps, the ability to change membership dues is needed. The spirit of the change within the entire Board is to manage reasonable increases in order to sustain the organization as long as possible. We invite you to ask questions of your Board and approve this change. If this proposal isn't approved, we are requesting a yes/no vote on a change in membership dues.

Proposed: Article XII – Dues: The Board of Directors will establish the amount of the annual dues. These dues shall be paid annually to the RWCS.

Existing: Article XII – Dues: The amount of the annual dues shall be established at the annual business meeting. These dues shall be paid annually to the RWCS.

Follow Up Proposal: In the case that the first proposal is voted down, please approve a change in membership dues to:

Primary: \$50 Associate: \$25.

Licensed to . Copyright Red Wing Collectors Society

WWW.REDWINGCOLLECTORS.ORG



ABOUT THE COVER

Although the Red Wing Stoneware Co. focused most of its efforts on producing utilitarian stoneware for food storage in the late 1800s, it also manufactured a line of more decorative items like planters, flowerpots, vases and umbrella stands. Many flowerpots survived, but the larger of these decorative items are seldom seen today. As longtime RWCS Member Larry Birks explains, one reason for this is that the pieces were left unglazed, and the brittle bisque clay was prone to damage. On pg. 10, Larry shares how he discovered a Stork umbrella stand and returned it to its original exquisite form.

CONVENTION PREVIEW



Story by Nancy Lambert, 2021 Convention Chairperson

WELCOME BACK TO CONVENTION!!

We know how excited everyone is to return to Red Wing, Minnesota for the RWCS 44th Annual CrockFest Convention after we had to postpone the event last year. The planning for CrockFest 2021 has been anything but dull as we navigated through state COVID restrictions, extreme limitations of available venues, and the challenges of holding an event in a park.

It is important that attendees read through all the information we are sending to you via this newsletter, as well as future e-mail messages that will keep you up to date. If you haven't given us your e-mail address, please do so; we want to be sure you receive last-minute details.

On Thursday morning, July 8, follow the signs posted to beautiful Colvill Park, situated right alongside the Mississippi River, and you will immediately notice our large event tent. We will have chairs set up inside the tent, but be sure to bring along lawn chairs this year. If you prefer to be outside the tent, you can sit under the many towering shade trees nearby.

The Welcome Session will include detailed information about this year's Convention, the 2021 Commemorative unveiling and the keynote address by Ray & Cindy Brinkmann. As the owners of the Stoneware Museum of Monmouth, Illinois, the Brinkmanns will discuss how their collecting led to opening this amazing new museum and what you will find when you visit.

Food trucks will be at the park and will offer you a variety of foods for breakfast and lunch. There will be picnic tables where attendees may gather with friends and enjoy lunch in this beautiful park setting.

The Members Auction will take place Thursday afternoon and Convention attendees will be able to view the spectacular lots that RWCS Auction Manager Dave Huisman has put together. This year's auction is both online and in-person – we are restricted to 250 seats inside the Armory at this time, but we are hoping new state guidelines before the event will allow more people to sit inside. Attendees may also gather with friends on lawn chairs outside the large garage doors at the Armory to bid. Your Convention badge will admit you to preview and/or bid at the Auction in person.

Many educational opportunities await you on Friday, July 9, and food trucks will be onsite all day. Last summer, the Convention Refresh Committee recommended using the

Licensed to . Copyright Red Wing Collectors Society

many years of recorded educational seminars done by RWCS experts as part of a new educational format. We are proud to introduce the first of the "From the Vault" series. Collector Classic Movies will be hosted by RWCS Member Dave Kuffel and feature RWCS Hall of Famer Sandy Short and her son, Dave, who presented "Salt Glaze – the Best of the Best" in 2001.



On Friday morning, KidsView creators and RWCS Hall of Famers Wendy Callicot and Sue Jones Tagliapietra invite all kids ages 3-16 to attend "Red Wing, Back to the Basics". Future collectors will learn how to identify stoneware and popular dinnerware patterns and will participate in a kids-only Show & Sale hosted by volunteer RWCS Member Deb Giesen. Make the CrockFest a family vacation and register your kids and grandkids for the 20th Anniversary celebration of KidsView!

Stoneware expert RWCS Member Larry Birks will present "Collecting Bailed Jugs, Plain and Fancy". Larry's remarkable attention to detail has gained him an amazing talent to identify pieces from different stoneware companies.

RWCS Hall of Famers Terry Moe and Larry Roschen will share their dinnerware knowledge of Village Green and other patterns in the line discovered since they first presented Village Green in 2007.

RWCS Hall of Famer Steve Showers will present "Five Decades of Digging". Steve has been digging in the Red Wing pottery dump since 1970 and has presented a seminar at RWCS Conventions every year since 1978. He will share more of his experiences and finds.

Two educational tours will be held offsite. Paul Hidebrandt of the Goodhue County Historical Society will lead members on a short walk in downtown Red Wing, describing a not so well-known underground river. RWCS Hall of Famers Gary & Bonnie Tefft will share their incredible and interesting knowledge about the Oakwood Cemetery and point out examples of stoneware grave markers, planters and various factory production pieces.

Following a full day of education opportunities, the **Annual Members Business Meeting** will be held in Colvill Park followed by **Party in the Park**. Don't miss this lively opportunity to relish social time with Red Wing friends and enjoy appetizers and live music by the band Flipside.

The RWCS Show & Sale is always a highlight of the week and a great opportunity to find that special piece before you head home. Hanisch donuts and coffee will be served to attendees while they give fellow members a chance to get set up in both the Colvill Courtyard and Event Tent.

Many thanks to the Education Day presenters and all other volunteers – the Convention could not happen without you!!

Don't Miss!!

"Party in the Park"
Friday, July 9 5:00-7:00 pm

Live Music by Flipside
Enjoy appetizers, bring your own beverages
and gather with collector friends
CONVENTION ATTENDEES WITH BADGE

DISPLAY: New this year, MINI-DISPLAYS will replace the larger floor displays of the past. The theme is "Four of a Kind" and only four pottery items/memorabilia are allowed per entry. The Display Room will be set up at the Armory and members will be able to easily view the Dennis Yaeggi Rare Items brought to Convention as well as Art Pottery, Stoneware, Dinnerware and Memorabilia displays by fellow collectors when they preview the Thursday auction. Winners of Best of Show and People's Choice will receive a 2021 Special Commemorative – only 19 are produced each year. Accompanying educational material can be added to the four items on display and are limited to a 6 foot table. For a Display entry form, please go to www.redwingcollectors.org/rwcs-calendar-of-events/annual-convention/display where you will find more information, as well as the Display Contract.

SHOW & SALE DEALER NOTES: Please bring your own carts/dollies for move in/out. There are no carts at Colvill Park. Watch your e-mail for more information closer to Convention. Parking is limited, so after you unload, please move your car further out so buyers will have more spots to park in and fill their vehicles with the pieces they buy from you.

RWCS APPAREL/GEAR: Don't miss the chance to pick up new items for 2021! CrockFest Souvenir T-shirts, stoneware company T-shirts and many other RWCS items will be available for purchase at the apparel table near Colvill Courtyard. Cash or check only; all profits go to the Red Wing Collectors Society.

MORE VOLUNTEERS NEEDED: Please consider volunteering for one or two hours during Convention – its a great way to meet new collector friends! Also, if you are able to help clean up on Saturday after Show & Sale, it would be greatly appreciated. Everything needs to be loaded into the trailer so we can get it back to storage for next year. Please call Nancy Lambert at 785-691-7213 to volunteer.

EARLY BIRD DRAWING WINNER: Congratulations to RWCS Member Vivian Johnson, winner of a 2021 Special Commemorative. Vivian's name was randomly drawn from the list of members who pre-registered for Convention and/or ordered a 2021 Commemorative by April 15. Congratulations, Vivian! 🍷

\$40 PRE-REGISTRATION DEADLINE: JUNE 8
After that date, walk-in registration at Convention will be \$50.

THANK YOU CONVENTION SPONSORS!!

**larry's jugs
ANTIQUES**



Licensed to . Copyright Red Wing Collectors Society



Colvill Park
515 Nymphara Ln
Red Wing, MN

**Red Wing National
Guard Armory**
885 E 7th Street

CONVENTION HIGHLIGHTS

View the entire Convention Schedule on erwcs.org with your smart phone.

TUESDAY, JULY 6

RWCS Board of Directors Meeting: 5 p.m. COLVILL PARK

WEDNESDAY, JULY 7

Pottery Museum of Red Wing Anniversary Celebration: MUSEUM

THURSDAY, JULY 8

Welcome Session/Keynote Presentation, Commemorative Unveiling:
10:30-noon, COLVILL PARK

Display Room Open: 12:30-4 p.m. ARMORY

Auction Preview: 12:30-4:00 p.m. ARMORY

Members Auction: 4:30 p.m. ARMORY (also online)

FRIDAY, JULY 9

Education Sessions: 9 a.m.-noon, 1-2:40 p.m. COLVILL PARK

KidsView: 10:30-noon, COLVILL PARK

RWCS Annual Members Business Meeting: 3 p.m. COLVILL PARK

Party in the Park: 5-7 p.m. COLVILL PARK

SATURDAY, JULY 10

Show & Sale move in: 7:30-9 a.m. COLVILL PARK

Show & Sale: 9 a.m.-1:30 p.m. (members only 9-10:30) COLVILL PARK

Banquet: 6 p.m. MT. FRONTENAC GOLF COURSE CLUBHOUSE

Convention programs will be available at registration with the complete schedule, education session and presenter information and Show & Sale table locations. You will also find the schedule on the "In Any Event" app created by RWCS Member Craig Orcutt.

KIDSVIEW IS BACK!

Parents and grandparents – we're CALLING ALL KIDS ages 3-16 to join us for this summer's "Red Wing Back to Basics" KidsView program! We're excited that KidsView creators and RWCS Hall of Famers Wendy Callicoat and Sue Jones Tagliapietra are returning to host this year's activities, which will include:

- Stoneware identification "2s and ovals"
- Dinnerware "Plates, pitchers, cups and more"
- Show & Sale for kids only!

Make the RWCS CrockFest a family vacation... register your kids for Convention today! Kids 16 and under are free and automatically enrolled in KidsView when you register them for Convention. Don't miss it!!!





COLLECTOR Q & A: Mitch & Julie Close

Story edited by RWCS Newsletter Editor Rick Natynski
Photos courtesy of RWCS Members Mitch & Julie Close



Mitch & Julie have an impressive array of butter and pantry jars with and without advertising.



Q. When did you begin collecting Red Wing and what attracted you to it in the first place? What was your first piece?

Julie: We began collecting Red Wing in 1998 when Mitch went to a local auction and bought our first piece – a 30 gallon crock. When we started collecting crocks, we would buy anything and everything we could find. We soon realized we needed to concentrate on one kind and chose Red Wing because we liked the colors. So the obsession began!

Q. What year did you join the RWCS? How did you find out about the club?

Mitch: We moved to Northern Indiana in 2004. We saw there was going to be a local auction with several Red Wing crocks listed and decided to go. A friend of ours that we met at the Shipshewana antique market was there and introduced us to RWCS Member Ron Keim. We soon struck up a conversation about Red Wing and Ron told us about the Indiana Wingers Chapter. He also told us about the RWCS. He invited us to their chapter meeting and the rest is history. We joined the RWCS and the Indiana chapter in 2006.

Q. What drew you guys to collecting 30 gallon crocks? Have there been any challenges in collecting them, like lack of display space or painful hernia surgeries?

Julie: Since our first Red Wing piece was the 30 gallon crock, that's what we decided to concentrate on. They make nice end tables, are good for storage and we can still move them around. At present, we have 17 30 gallon crocks – all of which have different markings. We also have two squatty 25s and one regular 25, which we kept when we were getting rid of our common Red Wing pieces to make room for more 30s. Fortunately we have a

Licensed to . Copyright Red Wing Collectors Society

concrete enclosed front porch that isn't a useful living space, so it works great for displaying our 30s. We also have a young son that we call on to help us unload and stack them. He always cringes when we get home from Convention and MidWinter events because he knows he's going to have to come and help us unload. We brought home five 30s from last year's non-Convention. We've gotten rid of some furniture to make room for them and we are OK with that.

Q. What other lines of Red Wing do you guys collect?

Mitch: We also collect pantry jars with and without advertising, blue band butters with advertising, bail-handled butters with advertising, 1 gallon crocks, Gray Line and any butter crocks of any size. We bought a whole set of Midnight Rose dinnerware locally off Craigslist and have been adding to it as we find pieces. We were using this set as our everyday dinnerware until someone told us it was a little hard to get, so we decided to put that in our china cabinet and use the Random Harvest for everyday use. We have been fortunate to find different pieces of this at several antique stores. Julie likes the blue Gypsy Trail line and is always looking for additional pieces. She also has several cookie jars. We also have one cabinet with mostly W.A. Painter pottery; we love his pieces and have actually found a couple in antique stores. We have a few Western Stoneware items, as well.

Q. Approximately how many pieces do you have? Which pieces are your favorites?

Julie: We currently have 200+ pieces in our collection. We enjoy all of our antiques, but are pretty proud of our 30 gallon collection and hope to continue adding to it. We're always on the lookout for more 30s and advertising pieces that we don't already have.



Water coolers and Gray Line complement Mitch & Julie's collection.



Above: Mitch & Julie are big fans of W.A. Painter Stoneware and even had Wyn make some custom pieces for them. At right: the first 30 Mitch bought at auction.



Q. Is it tough finding good Red Wing in Indiana?

Julie: Yes, it is very hard finding Red Wing in Indiana – especially the uncommon pieces. We like going to auctions and antique malls, but we always find the most at MidWinter and summer Convention.

Q. What do you guys enjoy about participating in the Indiana Wingers Chapter and attending the events?

Julie: We are actually two of the younger members of our chapter. We have learned so much from the older members, they know a lot about pottery and have great collections. We seem to learn something new at every meeting we have. We have 27 members including spouses. Four couples are from Ohio. Mitch became our chapter president in 2018.

Q. Do you have any fun stories to share about how you discovered and acquired a certain piece?

Mitch: We once sold a 2 gallon Elephant Ear crock that didn't have an oval when we first started collecting because we didn't know it was Red Wing. We also found the 30 gallon with the bung hole (pictured above) at a local antique mall, but didn't buy it. Julie called them the next day to see if it was still available, and it had sold. Thus the saying "if you see it and you want it, you better buy it because if you go back it will be gone."

A couple months later, we went back to the same antique mall and that 30 was sitting in the back with a sold sign on it. Julie asked what the story was on it and was told that the people had paid for it and hadn't come back to pick it up yet. Julie gave them her phone number and told them to give her a call if the people didn't come to pick it up because she wanted it. The gentleman at the antique mall said he had to wait a year before he could do anything. So a year went by and one day Julie got a call that if she still wanted the 30, it was hers. Needless to say she

dropped what she was doing and went to pick it up. So from then on, if we see something that catches our eye, we buy it.

Q. How often do you attend Convention and MidWinter? Do a lot of fellow chapter members ask you to bring stuff home for them when they aren't able to attend, or is it only Ron Keim who does that? Ha!

Julie: The first national event we attended was the MidWinter five years ago, and we have been to four summer Conventions since then. We have met a lot of great people at these events and now look forward to going so we can see everyone. We help out bringing things back for people whenever we can. We are part of the Indiana chain to get things where they need to go. It just always seems that the person we are taking things to is Ron, ha ha. But he helps us out, too.

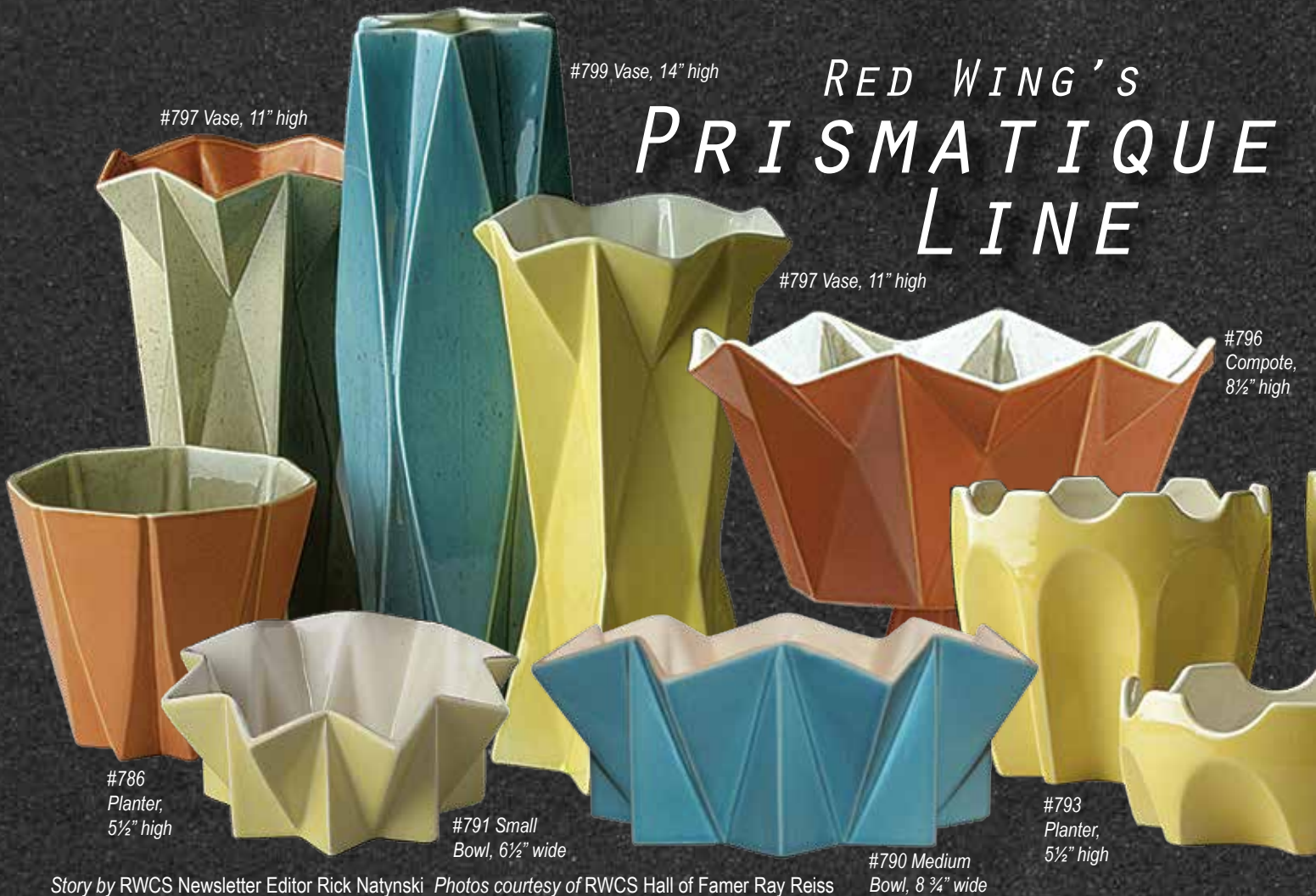
Q. Is there anything else you'd like to mention that you haven't already discussed?

Mitch: Convention has become our annual vacation. As Julie and I grow older, we hope to be able to volunteer and help out more at Convention. Living in Indiana has made it difficult for us to participate in some of the Red Wing activities. Hopefully in the future we will be able to take more time and be able to participate. We have met so many good friends in the Red Wing community. As another generation starts to take over, I hope we can continue to maintain the level of enthusiasm that has preceded us. This is a part of history that we do not want to lose, and I believe the museum and KidsView is an integral part of keeping the interest in Red Wing stoneware alive.

You can reach Mitch & Julie at mj.close@mchsi.com.

WWW.REDWINGCOLLECTORS.ORG

RED WING'S PRISMATIQUE LINE



#797 Vase, 11" high

#799 Vase, 14" high

#797 Vase, 11" high

#796
Compote,
8½" high

#786
Planter,
5½" high

#791 Small
Bowl, 6½" wide

#790 Medium
Bowl, 8¾" wide

#793
Planter,
5½" high

Story by RWCS Newsletter Editor Rick Natynski Photos courtesy of RWCS Hall of Famer Ray Reiss

As we're often reminded, inspiration can come from strange places. For example, it is said that author Agatha Christie ate apples while bathing to come up with the plots for her mystery novels. And Dr. Suss? He collected hundreds of odd hats from around the world and put one on whenever he struggled with writer's block. For famed industrial designer Belle Kogan, it was a 1962 trip to the dentist's office that did the trick.

Although it was only a one-time thing, Kogan found herself sitting in the dentist's chair when she was inspired to create Red Wing's Prismatic Art Pottery Line. As the story goes, seeing the angular-shaped roots of a tooth flipped a switch in her creative mind, causing her to hurry back to her studio to sketch preliminary designs. Of all the lines Kogan created for Red Wing, starting with the "Belle Kogan 100" in 1938, Prismatic quickly became the best seller.

Kogan's nephew, RWCS Member Bernie Banet, recalls visiting his aunt's New York design studio in 1962 at age 18, where he saw Prismatic shapes featured on design boards.

"From talking with Belle, her encounter with the tooth inspired the shapes with curved arches," Bernie recalls, referring to shapes #788 and #792-795 pictured above. "I've often speculated that perhaps the facets on the top of the bowl, planter and compote were inspired by the 'dental crown' term and added to give those pieces a 'royal crown' appearance, but I never asked her about that. She did share that the

straight-lined Prismatic pieces were inspired by origami, though."

Bernie says Kogan never used clay to design her works. Unlike designer Eva Zeisel, who sculpted many of her designs herself, his aunt always drew her designs on paper and had a clay modeler cast molds for her prototypes. But in the case of Prismatic, her drawings were first turned into cardboard mockups due to their complex nature.

Since these pieces couldn't be made on a potter's wheel, Bernie says Kogan had to help Red Wing's ceramic engineers figure out how to produce them. Dr. Marion John Nelson, the late University of Minnesota art professor who authored the "Foreword" section of *Red Wing Art Pottery* by RWCS Hall of Famer Ray Reiss, noted that Kogan's Prismatic Line was Red Wing's "greatest achievement in integrating design and casting technique," as the divided molds aligned with the geometric shapes and removed any evidence of seams.

"The forms in this line also blatantly break with turned prototypes and grow directly out of the technology used in production," Nelson added.

Prismatic consists of 15 different geometric shapes that were generally made in five different glaze colors – Mandarin Orange, Celadon (green), Persian Blue, Lemon Yellow and White. As the items above depict, the interior of the blue and yellow pieces were usually lined with white, while exterior/interior color combinations of green/orange and orange/white were reversed, depending on



#799 Vase, 14" high

#794 Vase, 11" high

#798 Vase, 8" high

#795 Vase, 8" high

#788 Compote, 5½" high

#792 Bowl, 7" wide

#789 Large Bowl, 10½" wide

#787 Compote, 6½" high

#785 Planter, 5½" high

whether they were vases, or bowls, planters or compotes. Although not considered part of the Prismatic Line, Kogan also designed an origami-inspired ashtray (#825), which Red Wing released in 1963.

Red Wing often decided which glazes would be used on Kogan's earlier designs, but Bernie is under the impression that his aunt worked closely with the Potteries in deciding which glaze colors to implement on Prismatic. By the 1960s, Kogan was serving as a color consultant for many of her clients, and she even sat on a national panel that determined which color combinations would influence future design seasons.

Red Wing sold the whole Prismatic Line from 1962 to 1964. Twelve pieces remained by the time the *1965 Red Wing Art Pottery and Gift Catalog* was released; the #794, #795 and #799 vases were omitted. Three shapes continued on in 1966 into 1967, when the Potteries closed. According to pg. 228 of Reiss's *Red Wing Art Pottery*, those were the #787 compote and the #790 and #791 bowls. In addition to the colors listed above, these three items can be found in a few additional glazes, indicating that the new color choices were likely introduced in 1966. Two exterior glazes included a slightly lighter Blue (see #790 above) that lacks the flecks found in the Persian Blue glaze and Cocoa Brown (not pictured above). White pieces lined with a Mint Green interior can also be found (also not pictured).

Per the *Spring 1963 Red Wing Art Pottery Catalog*, Prismatic

items originally retailed for \$2 to \$5.50 apiece. Although it has long been viewed as one of Red Wing's most recognizable and visually interesting lines of art pottery, prices are only now exceeding the highs that were experienced in the late 1990s. (As many longtime RWCS members can attest, prices of many artware lines jumped due to increased awareness when Ray released *Red Wing Art Pottery* in 1996. Some lines returned to pre-book levels, while others have increased over time.) About a year ago, you could still occasionally win Prismatic pieces for less than \$100 on eBay. But of the 40 Prismatic pieces that sold on eBay between Feb. 9 and May 8 of this year, more than half surpassed the \$200 threshold, and several shapes and color combinations even topped \$300.

In addition to being her best-selling line of art pottery, Kogan revealed that Prismatic was also one of her favorites when Bernie visited her in 1992, after she had moved to Israel. (She shared that the Belle Line, which Red Wing produced from 1963 to 1964, was another favorite.)

If you're looking to add some Prismatic pieces to your Red Wing collection, the good news is that unlike the more obscure lines of Red Wing art pottery, there always seems to be at least a few pieces for sale on eBay. The question, of course, is whether prices will stabilize, or continue to increase. Only time will tell. 🍷

Special thanks to RWCS Hall of Famer Ray Reiss and longtime RWCS Member Bernie Banet for their contributions to this article.

HISTORY REPEATS ITSELF

Story & photos by Past RWCS President Larry Birks



Before

Last fall, I made a pass through the local Missouri antique mall where we rented a showcase. In the back corner of a booth, I spotted an umbrella stand that caught my attention. I could immediately tell it was stoneware and closer examination showed it had led a hard life. What made me stop and look was the raised pattern on the piece showing a pair of tall crane-like birds and a lot of leaves and cattails all the way around it.

Big chunks were missing from the top and bottom rims, and it showed signs of having been buried, as much of the surface on one side was eaten away from a chemical attack from the soil. It also had a 4-inch crack running from the top rim down the side. To top it all off, someone had spray painted it flat black! Still a striking piece, but not one I was interested in taking home for restoration.

About 3 months later, I went back and found the umbrella stand still parked in the corner of the booth, and still looking quite forlorn. As I glanced at it again, a memory flashed that I might have seen something similar in a Red Wing reference book, so I took a picture and headed home. The memory sent me to RWCS Hall of Famers Gary and Bonnie Tefft's book, *Red Wing Potters & Their Wares*. Sure enough, there was a section from the 1894 Red Wing Stoneware Company catalog showing a drawing of the exact "Stork" umbrella stand (pictured below). To say I was ecstatic was an understatement! Since I had never seen one in 40 years of collecting, I decided it was time to do some research.

The "Ask the Experts" section on the RWCS website referenced a Stork umbrella stand in the October/November 1993 *RWCS Newsletter*. I recently finished collecting a full set of past newsletters and found the article written by RWCS Member Tod Bellrichard titled "Another First Discovered". This is where history repeats itself. The article explained how Tod discovered an umbrella stand with storks on it in the back of an antique mall, covered in peeling paint, and went home thinking maybe he'd seen it before in a book! That book was the same book I referenced. We both went back and bought the umbrella stands after convincing the mall owners that we needed further discounting on an already fair price for an umbrella stand in extremely poor condition. Further Google searches revealed pictures of two more Stork umbrella stands, and I think one may have been the one that Tod referenced in his article. So, there aren't many around.

The umbrella stand measures 21 inches tall – about 4 inches taller than Red Wing's spongeware version. Once I got it into my shop, I realized two things: 1. It was an exceptional piece of stoneware with intricate detailing, and 2. It was going to be one of the most difficult pieces to restore that I've ever tackled.

The piece was "unglazed" and had been manufactured and supplied to the market in bisque clay, the same as flowerpots of the time. The idea of furnishing the piece in unglazed clay would let the purchaser use it as it was or

paint it whatever color(s) they wanted. That said, the pieces were most likely prone to easy breakage. And because of all the intricate detail, they required a lot of hand finishing, making them time consuming to manufacture and costly to produce. These two premises probably explain why many haven't turned up over the years.

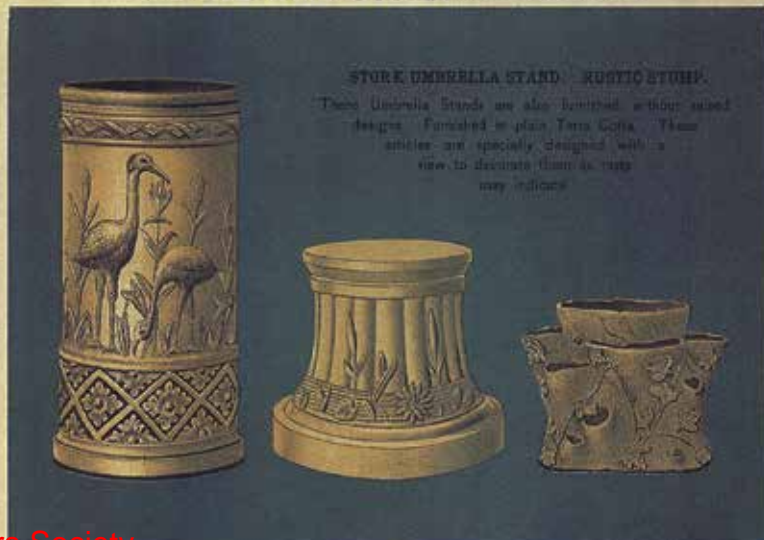
The restoration took place over 6 months. It had to be cleaned, stripped of all the paint, and the crack had to be closed and repaired. Then I started the long process of filling all the voids, matching textures inside and out, and finally making molds to match the rosettes, borders and decorations that were missing. Once molded into place, each piece had to be hand smoothed and textured to match the original finish.

Once all the broken areas were repaired, the rash of background pits were filled, sanded and textured and the mold areas replaced and smoothed. Then it was time to color-match the base material and bring the whole piece back to one color as it came from the factory. A topcoat of flat finish was applied to protect the color-matched finish. The forlorn piece that was languishing in the back of an antique mall was returned to the umbrella stand that was just as beautiful it had been when it left the factory some 125 years ago. It's always fun to finish a project like this and know that a piece of history has been restored so it can be enjoyed for generations to come.



After

THE RED WING STONWARE COMPANY.



2020 RWCS FINANCIAL REVIEW

The Red Wing Collectors Society's financial results for 2020 are unusual, to say the least. The Board of Directors made many tough decisions this year. We said goodbye to our director and have now hired two part time people. As the treasurer, I truly miss Stacy. However, we move forward.

I'm pleased to present the RWCS Financial Report Summary as of December 31, 2020. Please take a moment to review the numbers along with my comments at the bottom of the page. I would love to entertain questions. You can e-mail me at treasurer@redwingcollectors.org or message me on Facebook.

As we look to the future, many changes are in store. Many volunteers are working to improve our sustainability. As of now, the Board is working based upon a preliminary budget, which we are revamping to change with the time. This is your Society and each of us – you and I – have a responsibility to keep the RWCS healthy for generations to come. Thank you for your membership, your time and your talent. Cheers to the next new chapter of the RWCS! -Dan Beck, RWCS Treasurer 🍷

FINANCIAL POSITION	2018	2019	2020
CASH IN BANK	\$465,265	\$449,491	\$472,390
OTHER ASSETS	11,531	7,652	6,444
LESS LIABILITIES	(52,968)	(51,881)	(42,490)
NET ASSETS	\$423,828	\$405,270	\$436,343

- Net assets represent the funds the RWCS has available at the end of each year. Although our net assets are declining from our losses, there are multiple years of surplus available.
- The RWCS remains healthy with net assets of \$436,343.
- Our cash balances are maintained in local Red Wing banks in several CD, money market and checking accounts.

RED WING COLLECTORS SOCIETY 2017-2020 RESULTS (2021 BUDGET TBD)

REVENUES	2017 ACTUAL	2018 ACTUAL	2019 ACTUAL	2020 ACTUAL
GENERAL & ADMIN	\$92,427	\$87,531	\$84,362	\$95,751
CONVENTION	49,233	37,611	45,604	15,975
COMMEMORATIVE	121,117	101,879	92,936	151,822
AUCTION	73,635	95,903	88,854	3,771
MIDWINTER	9,681	10,220	11,263	11,210
YOUTH	2,791	446	348	16
TOTAL REVENUES	\$348,884	\$333,590	\$323,366	\$278,545
EXPENDITURES	2017 ACTUAL	2018 ACTUAL	2019 ACTUAL	2020 ACTUAL
GENERAL & ADMIN	\$181,688	\$173,722	\$174,288	\$156,767
CONVENTION	34,020	22,761	29,622	4,670
COMMEMORATIVE	68,920	50,335	50,077	77,445
AUCTION	64,564	85,695	78,500	222
MIDWINTER	8,263	9,094	8,685	9,072
YOUTH	1,110	1,044	752	-
TOTAL EXPENDITURES	\$358,565	\$342,651	\$341,924	\$248,177
INCOME (LOSS)	2017 ACTUAL	2018 ACTUAL	2019 ACTUAL	2020 ACTUAL
GENERAL & ADMIN	(\$89,261)	(\$86,190)	(\$89,927)	(\$61,016)
CONVENTION	15,213	14,850	15,981	11,305
COMMEMORATIVE	51,544	42,859	27,049	74,377
AUCTION	9,071	10,208	10,354	3,549
MIDWINTER	1,418	1,126	2,578	2,138
YOUTH	1,681	(598)	(404)	16
TOTAL INCOME (LOSS)	(\$9,681)	(\$9,061)	(\$18,558)	\$30,368

- The year of the missing Convention, yet we made money? How did this happen? First, we incurred minimal sunk cost on Convention, yet member after member donated their registration fees, and we made money. We can't thank you enough for this!!
- Second, both the annual RWCS Commemorative and the COVID jug sold the lights out. Again, thanks to all who supported RWCS this year!
- Our general and administrative expenses are down considerably, as we reduced our payroll costs and other expenditures.
- Another major boost is that members contributed to the Society to help get us through these years of struggle. We received more than \$20,000 in donations from our members, to which we all owe a debt of gratitude. At the same time, members and membership revenue was down this year as in years prior. All of the RWCS is greatly appreciative of the donations received this year, but we know we cannot count on this year after year.
- You will see changes in many aspects of the RWCS as we move forward.

WWW.REDWINGCOLLECTORS.ORG

Licensed to . Copyright Red Wing Collectors Society



Red Wing #1163
Eagle in Matt Lily
Green glaze, 9".
Photo courtesy
of RWCS Hall of
Famer Sue
Jones Tagliapietra
& Member Jeff
Tagliapietra.

POTTERY MUSEUM OF RED WING NEWS



Story by Char Henn, Pottery Museum of Red Wing Director
Photos by Larry Peterson, RWCS Hall of Famer

Hello from your Pottery Museum of Red Wing, and THANK YOU! As I write this, we have just had our first Spring Fling Outdoor Antique Market. While the weather was colder than we hoped, the passion for Red Wing products kept us warm and we were able to raise a nice amount of money to support your Pottery Museum of Red Wing. More than 30 vendors set up in the parking lot and in the Red Wing Senior Center meeting room down the hall from the museum, offering good prices on Red Wing pieces and other antiques and collectibles. Warm Toasties Food Truck again provided great food. The sun came out for the auction and we enjoyed the day.

Isn't it amazing to think that your museum is marking its 20th Anniversary this year? We will celebrate with parking lot sales Tuesday through Friday (July 6-9) and an anniversary party and auction on Wednesday, July 7. Mark your calendar now and let us know if you have anything that you would like to donate for the fundraising auction. Looking further ahead, our fall event will be held October 2-3, 2021.

We thank everyone for supporting us these last 20 years – you have made the Pottery Museum of Red Wing a top-notch attraction! THANK YOU!



Photo courtesy of Char Henn.



GREAT ZINC AT CROATT AUCTION

My dad's Red Wing collection was sold in Storden, MN on March 14. Dad enjoyed going to auctions and hunting for Red Wing for many years. He had a lot of interesting stories that went along with some of his favorite finds.

I would like to give a huge thank you to Auctioneer John Croatt and his entire crew for all their hard work! John said it was "an honor to be able to sell that quality of a collection for a gentleman that I knew for many years."

I'd also like to thank everyone who was interested in Dad's collection and placed bids at the sale. He would be pleased that these items were passed to others to enjoy.

-RWCS Member Karla Gartzke

At left: A 5 gallon birch leaf churn with "Rinke's Cash Grocery" Lambertson, MN advertising was the top earner, closely followed by a 2 gallon birch leaf crock with the scarce Minnesota Stoneware USA oval. There was no buyer's premium or sales tax at the auction.



Photo courtesy of RWCS Member Bill Prock



Photo courtesy of RWCS Member Chris Osterholz



Photo courtesy of RWCS Member Shelley Lange

Above: 20 gallon transition crock with cobalt leaves and MN Stoneware oval (short hairline). Below: 2 gallon wing Ear crock with "Minn. Stoneware" stamp.



Photo courtesy of RWCS Members Ken & Barb Williams



Photo courtesy of Collector Joe Mills, Jr.

Above: 20 gallon Elephant Ear transition crock. Below: 2 gallon wing crock with "A.H. Anderson's" Storden, MN advertising (damage on back).



Photo courtesy of RWCS Member Kevin Miller

RED WING STONWARE, POTTERY & DINNERWARE AUCTIONS



STONEWARE, POTTERY & DINNERWARE 10 a.m. Tuesday, July 6, 2021 The Bluffs Bar & Grill

(Just across the bridge from Red Wing)
N1833 785th St., Hager City, WI

8-20 GAL ZINC CROCKS; 2-5 GAL SALT GLAZE CROCKS; 3,5,6 GAL WATER COOLERS; 2 GAL LID; ADV. BUTTER CROCK (MOLAND COOP CREAMERY, KENYON MN); BUTTER CHURNS; JUGS; ASSORTMENT OF MINI JUGS; GRAY LINE; ASSORTMENT OF BOWLS; MASON FRUIT JARS; KO-REC FEEDERS; SALT GLAZE SPITTOON; BROWN FOOT WARMER; LARGE ROOSTER CASSEROLE; COOKIE JARS; BRUSHWARE; ACCORDION PLAYER AND DANCING GIRL FIGURINES; FISH AND CAT ASH RECEIVERS; ASSORTMENT OF ART POTTERY; SEVERAL PATTERNS OF DINNERWARE TRIVETS; NOKOMIS; BLUE, YELLOW, GREEN AND COBALT ELEPHANTS; COMMEMORATIVES, PLUS MUCH MORE. CATALOGS \$5 FOR COMPLETE LISTING.



368 PCS. OF QUALITY RW STONWARE 10 a.m. Wednesday, July 7, 2021 The Bluffs Bar & Grill

N1833 785th St., Hager City, WI
SALT GLAZE CROCKS; ZINC CROCKS; BIRCH LEAF & ELEPHANT EAR; WATER COOLERS; CHURNS; SHOULDER & BEE HIVE JUGS; APPLE SAUCE JARS; BALL LOCKING JARS; ADV. BUTTER CROCKS & BEATER JARS; FRUIT JARS; REFRIGERATOR JARS & PANTRY JARS; BAILED HANDLE BUTTER JARS; SPONGEWARE UMBRELLA STAND, ADV. PITCHERS & BOWLS; GRAY LINE REFRIG JAR, CUSTARD CUPS, CASSEROLES, SALT SHAKERS, REAMER, BUTTER JAR; SHOLDER BOWLS; IRISH PITCHERS. CATALOGS \$5 FOR COMPLETE LISTING. SEE WEBSITE FOR MORE PICTURES OF EACH AUCTION.



HOUGHTON'S AUCTION SERVICE • 2641 GOLDFINCH LN RED WING, MN 55066

Licensed to: 651-764-4235 WWW.HOUGHTONSAUCTIONS.COM

AD RATES

Classified ads are 20¢ per word for members and 30¢ per word for non-members; \$4 minimum charge and are accepted on a first-come, first-served basis. In addition to appearing in the newsletter, classifieds and display ads are posted on the RWCS website.

DISPLAY ADS

Display Ad Size	Ad Rate
Full page	\$500
1/2 page (horizontal or vertical)	275
1/4 page	150
1/8 page	85

Display ads purchased by non-members cost an additional 15%.

DISPLAY AD DIMENSIONS

Full Page	8 x 10.5
1/2 page (horizontal or vertical)	8 x 5.25
1/4 page	4 x 5.25
1/8 page	4 x 2.125

Ads must be supplied electronically as an EPS or PDF file. There is an additional 10 percent fee for design and makeup if needed (\$10 minimum).

DEADLINES

Issue	Ads	Editorial	Mail Date
January	Nov. 25	Nov. 15	Jan. 6
March	Feb. 10	Feb. 1	March 15
May	April 10	April 1	May 15
September	Aug. 1	July 25	Sept. 1
November	Oct. 1	Sept. 25	Nov. 1

EDITOR ADDRESS

E-mail your ad to newsletter@redwingcollectors.org. Make your check payable to "RWCS" and mail to: Rick Natynski, P.O. Box 198, Pewaukee, WI 53072. If you don't have e-mail, you can mail your ad with your check or call Rick at 414-416-WING (9464).

CLASSIFIEDS

RED WING FOR SALE

FOR SALE: 45 Red Wing Commemoratives covering 21 various years 1983-2011. Special pricing on lot. E-mail gw.anderson@comcast.net or call/text 612-961-6774.

FOR SALE: 25-year, 800-piece collection of RW dinnerware, cookie jars, dinner plates, patio trays, dinnerware water coolers, crocks, jugs, water pitchers, bread trays, seven egg trays with lids and other assorted pcs. E-mail rdwkenneth@aol.com to ask about specific pieces you're seeking and I'll respond with asking price if I have it. Located in Lagrange, OH.

FOR SALE: Red Wing 20lb butter crock, 3 gal ribcage crock, Grayline custard cup, Beater Jar, 2 gal crock w/ski oval and RWCS Commemoratives from the following years: 1990, 1991, 1994, 1996, 1997, 2000. All are in excellent condition without chips, cracks, hairlines. Contact Maureen at 703-801-7105 or nydreamer2@gmail.com.

FOR SALE: 2013 RWCS Special Commemorative spotted cow and calf \$600: Complete sets of; 7 Red Wing paneled sponge bowls \$850, 28 Iowa Chapter Commemoratives \$900, 20 Nebraska Redwings Commemoratives \$600, 44 RWCS Convention badges \$250. WDM, IA. Contact 515-473-4844 or clreedinwdm@mchsi.com

FOR SALE: Wing butter churns 3, 4 & 5 gal, \$150 each; 2 & 6 gal, \$225 each. 3 & 5 gal birch leaf oval over churns, \$160 each. Some lids available, add \$50 each. Brown top wing jugs (1 & 2 gal), \$150 each. 3 gal ball lock jar, \$125. 5 gal birch leaf beehive, \$250; 4 gal wing only beehive, \$250. 5 gal Ice Tea Cooler, \$300. Must pick up in Central WI. Call 920-728-2670.

FOR SALE: 1982 through 1995 Red Wing Club Newsletters, all to go. All years complete, except 1990 and 1991. Best offer plus postage. Contact rbrwing44@gmail.com.

RED WING WANTED

WANTED: Will pay strong price for RW bean pot with Westby, Wis. advertising. Contact Rich at 608-617-7424 or repatlargeeast@redwingcollectors.org.

WANTED: 2 gal salt glaze Single P churn, any condition considered. 1 gal Buckeye Excelsior Springs bailed jug. 1 gal and 1 qt Macomb Excelsior Springs bailed jugs. Minnesota or Red Wing advertising bailed jugs. Contact Larry at grn57tr@gmail.com or 816-898-9260.

WANTED: Still searching for any Montana crocks and jugs! Tired of dusting? I can help you with that. All you have to do is contact me and something good will happen for both of us! Contact me at 406-788-7851, adbliss@3riversdbs.net or drop Skyland Rider a note on Messenger. Thanks! 5/21

WANTED: Looking for quart sized advertising jugs! Sell it to me before the cat knocks it off the shelf, your spouse sells it to buy something frivolous, or it gets lost in the couch cushions! Like the song says "Call me, call me any, anytime. You can call me any day or night." 406-788-7851, e-mail adbliss@3riversdbs.net, or drop Skyland Rider a note on Messenger. Thank you! 5/21

WANTED: Seeking quality jugs & crocks with North Dakota advertising. Butter crocks & churns, too. The more rare the better! Will pay top \$\$ for the right pieces. Contact beehive@polarcomm.com or 701-270-0242.

AT RED WING'S SUPER 8 MOTEL



CONVENTION WEEK IN RED WING

WEDNESDAY, JULY 7
8 a.m. - 3 p.m.

&

THURSDAY, JULY 8
8 a.m. - 2 p.m.

GAIL PECK'S

STONEWARE SALE

BE THERE!

CONSISTING OF RED WING, BLUE/WHITE & MISCELLANEOUS STONEWARE IN ADDITION TO RED WING MEMORABILIA

RED WING SUPER 8 MOTEL CONFERENCE ROOM (POOL ENTRANCE)
Licensed to . Copyright Red Wing Collectors Society

LIVING ESTATE AUCTION

Chuck & Eva Drometer

Red Wing Collection

Monday 7/5/21 5pm cst



A NEW DAY AUCTIONS

Bid online through Proxibid-

WE SHIP AROUND THE WORLD!

1149 4th St S, Cannon Falls, MN 55009
Auctioneer: Josh Stevens MN Lic # 19-162

507-263-7373

www.ANewDayAuctions.com

1811 Old West
Main Street
Red Wing, MN
55066

Larry's jugs

Shop:
651-388-3331

Cell:
612-719-6113

Watch our Facebook page for
new items as they arrive!

ANTIQUES

We buy collections weekly!

Four ways to shop!

We carry a large inventory of general antiques,
but we specialize in Red Wing pottery.



#1 Larry's Jugs main shop at 1811 Old West Main St. (Ice House), Red Wing.
Open Thursday-Sunday through Dec. 24



#2 Larry's Warehouse next door at 1755 Old West Main St., Red Wing.
Open Thursday-Sunday through Dec. 24



#3
The original Larry's Jugs
at 751 Wilkinson St.,
Red Wing. Visit during
Convention Week,
where a huge sale with
vendors will be set up
July 8-10!



#4 
Visit the
Larry's Jugs
Antiques
Facebook
page. We
ship!

Licensed to . Copyright Red Wing Collectors Society

BIG WAS "IN" AT SEECK'S BERMAN AUCTION

Story by RWCS Newsletter Editor Rick Natynski Photos courtesy of Seeck Auctions

When news started to circulate that Seeck Auctions signed on to sell part of RWCS Member Lyle Berman's collection, everyone wanted to know which pieces he was selling. With many one-of-a-kind items in his collection, which exceeded 900 pieces, he has put together one of the best Red Wing stoneware collections ever assembled.

Lyle hit the ground running when he started collecting in the late 1990s, and money was no object. Turned on to Red Wing by his late brother-in-law, longtime RWCS Member Roger Hildebrand, Lyle was the top buyer of quality zinc glaze and salt glaze crocks, jugs, churns and Ice Water coolers up until his buying slowed down in the mid-2010s. A portion of his collection has resided at his ranch in Colorado, but now that he put the property on the market, he decided to sell about 300 of those pieces through Seeck Auctions, which is owned and operated by RWCS Members Jim & Jan Seeck.

The 20 highest-grossing items from the auction are pictured here; only three hold less than 12 gallons. As good these items are, many pale in comparison to the pieces he's keeping. Lyle still has around 600 pieces, and he says he doesn't plan on selling them anytime soon.



\$28,000

Most collectors expected the rare 15 gallon double-handled birch leaf jug below to take top honors at the May 1 auction, but the 60 gallon wing crock above surprised everyone. Only three with a hand-drawn "60" are known to exist, and this one is considered to be the best of them.



\$11,000



\$4,750



\$3,750
front-stamped, damaged



\$3,300
signed on back, pitting



\$26,000



\$4,500
signed on back



\$5,250
front-stamped



\$3,750
front-stamped



\$4,500



\$2,700



\$6,000 ski oval



\$2,800
restored



\$2,900



\$3,500 MN USA oval



\$4,750 MN USA oval



\$2,700 ski oval



\$6,500



\$3,000 ski oval



\$4,250 transition

WWW.REDWINGCOLLECTORS.ORG

Licensed to . Copyright Red Wing Collectors Society